

innermost®

From the creative culture
of modern London.

A brand as British as
London.

The benchmark for
reliable eccentricity.

Behind the brand





aesthetic innovation.

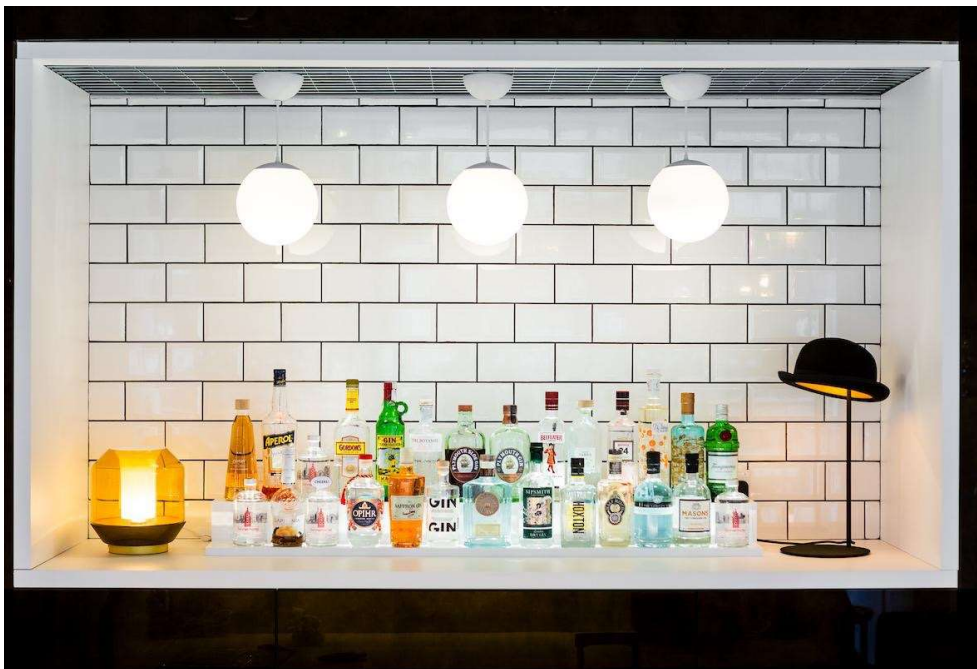


re-purposing
conventional
materials &
processes.

A minimalist scene featuring a dark, textured wall and a dark floor. A floor lamp with a thin, dark stand and a cylindrical shade is positioned on the left. The lamp is turned on, casting a bright, rectangular pool of light onto the wall behind it. The light pool has a soft, glowing center that fades into a darker blue at the edges. The overall atmosphere is quiet and contemplative.

light is a material

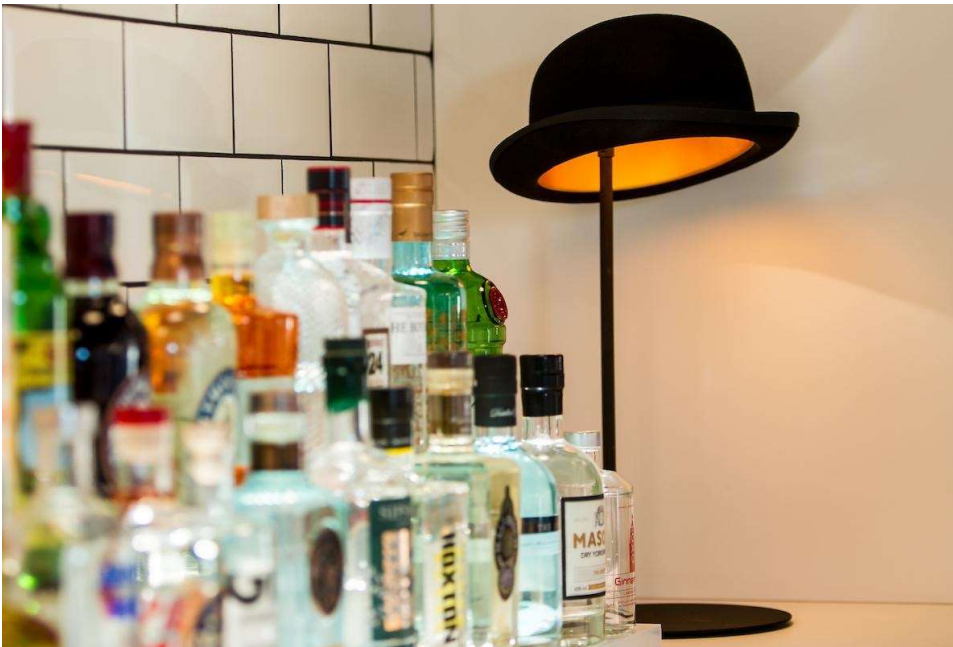
Light, furniture, gin?



the social side of life.
where people gather.

Bar. Cafe. Restaurant. Lobby. Meeting
room. Tea House.

Coffee Shop. Dining & Living Room.
Kitchen. Ballroom. Club.



From our design
process to our
choice of materials:

we craft everything
with longevity in mind,
aiming to give you
a quality product
that has a long,
trouble free life.



APPROVED!





Product range

We make product in 4 distinct categories

Large and Luxury

Mostly large format and high value material formats aimed at the high end residential, hotel and F&B market.

The Design Collection

The core of the Innermost range, innovative well priced items that innovate with process, material and aesthetics.

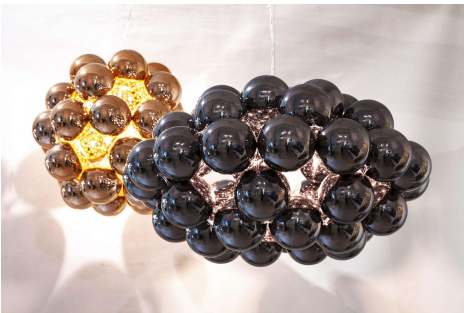
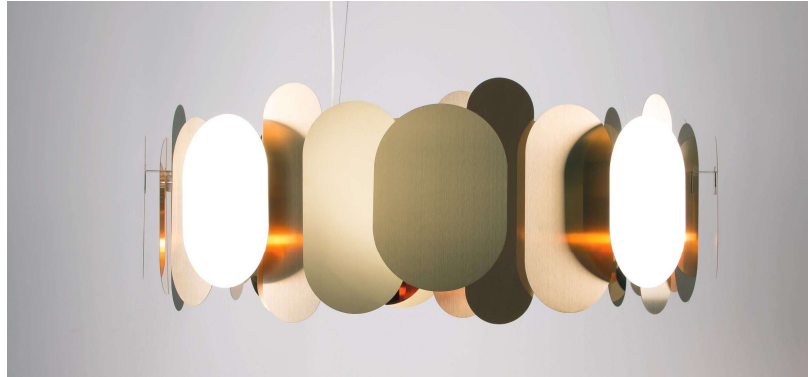
Essentials

All the quality and detail from the Design Collection applied to a series of beautiful basics that offer stylish simplicity for almost any interior project. Prices that will pleasantly surprise.

Shades

Contemporary shades suitable for contract and domestic applications updated with detail, tech and accessories for the 21st century.

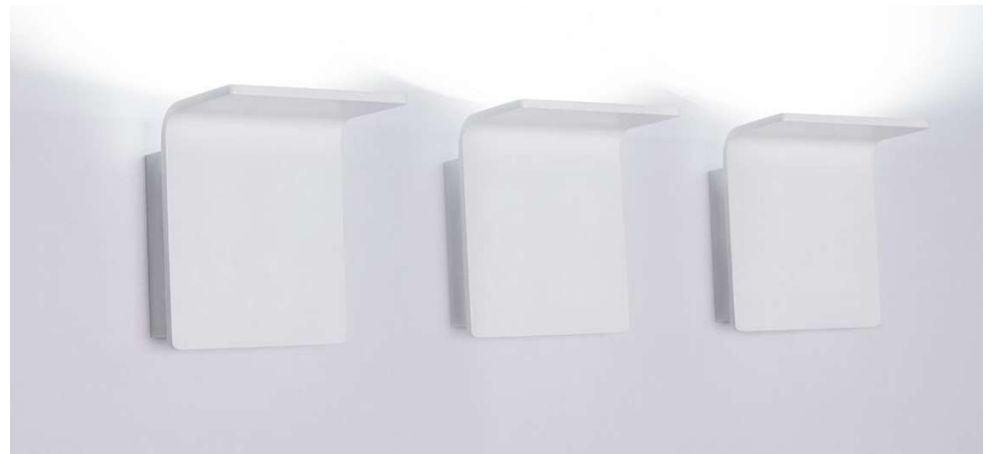
Large and Luxury



The Design Collection



Beautiful Basics



Shades



Essential collection





Lighting - suspension

FACET



Facet is an amazing chandelier design by Tom Kirk for the innermost lighting range. This highly polished chandelier and pendant light is made up of hundreds of etched and folded strips of stainless steel. The highly polished panels are suspended at different angles around the circumference, creating a surface of small facets. Each facet presents part of an amazing fragmented image of the surroundings. The effect from afar has been likened to looking at glass or crystal, rather than perfectly polished metal

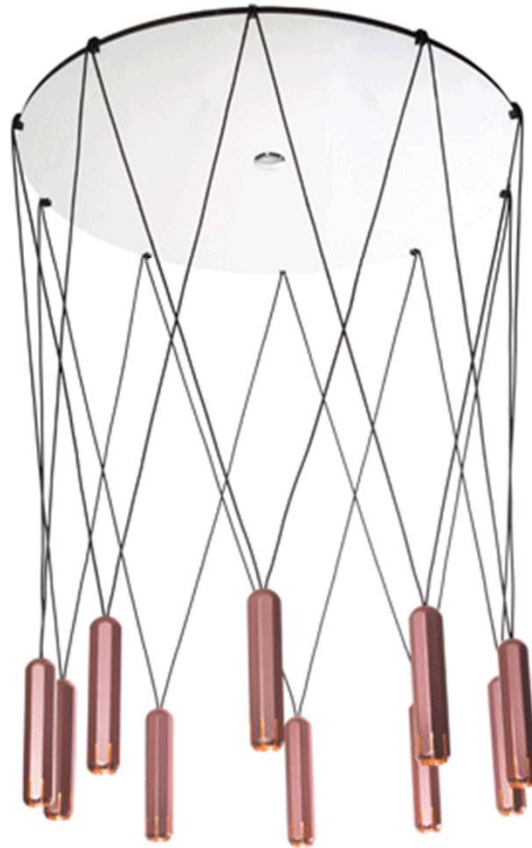




Inspired by Victorian architecture- particularly the octagonal turrets that he noticed on railway and residential buildings. These turrets originated from medieval castles and later became popular in Victorian architecture, conveying an impression of wealth, power and strength. Bartlett used these forms as the starting point for his design, which has a strong, engineered aesthetic.

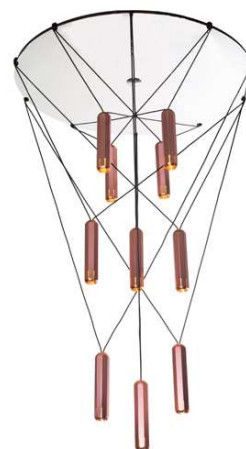
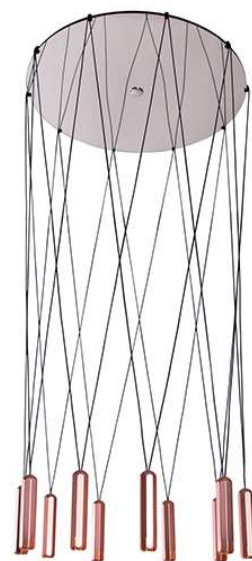
Brixton Spot

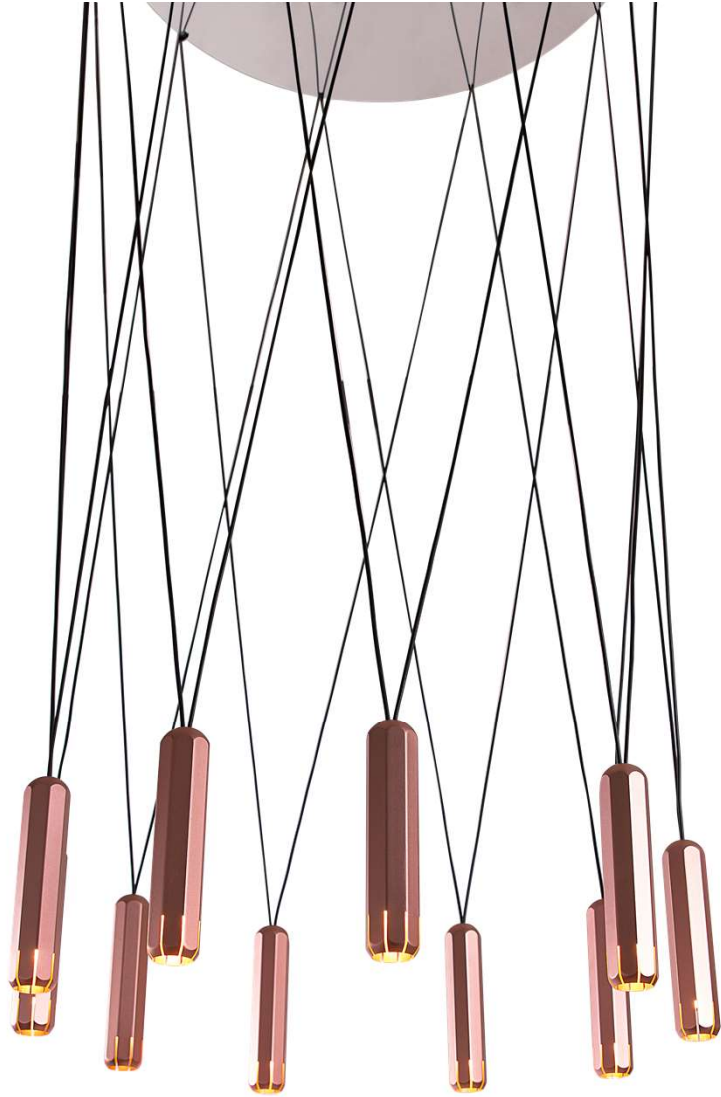
By James Bartlett



Brixton Spot Cluster

By James Bartlett





Brixton Spot Cluster

By James Bartlett



Brixton Wall

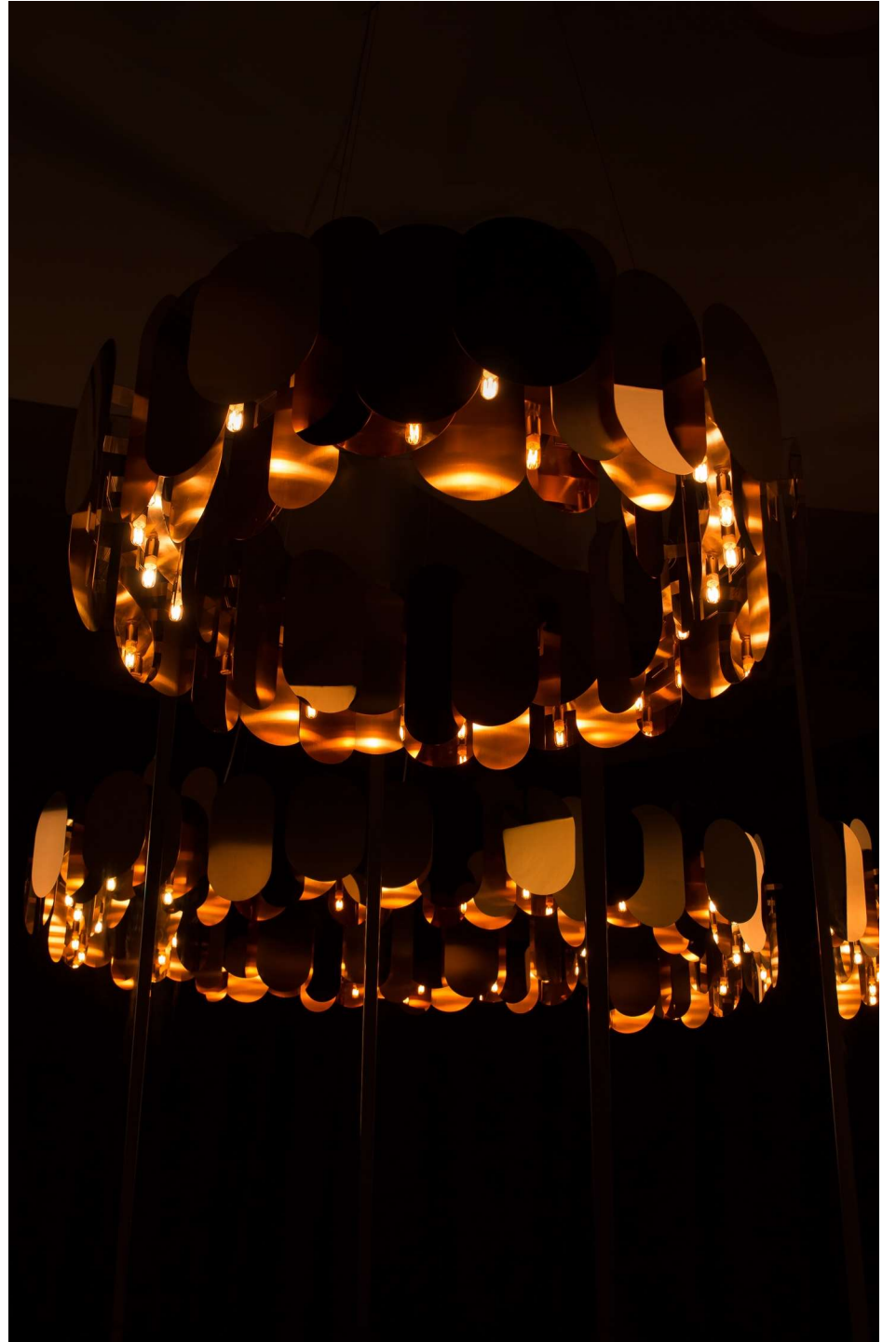
By James Bartlett



Designed by innermost co-founder, Steve Jones, Panel came from experimentation with materials and forms with a mix of finishes. Jones was inspired by contemporary jewelry as well as architectural metal cladding when he chose to use a mix of both polished and matt metal surfaces. The design layers assorted oblong forms arranged around a circular base

Panel

By Steve Jones





Buckle



Buckle is a stainless steel pendant light and also an ambient lighting sculpture – it illuminates by bouncing light off its own internal surfaces and provides wonderful background light. Available in two sizes, it is neither a classic up or down-lighter but produces a unique effect all of its own. The feeling it creates has often been likened to light bouncing off water.





BEADS

The Beads range is made up of two unique pendant designs that resemble beads strung together, and create hovering spheres of light that seem to float in space. These striking lights provide both direct and ambient lighting, perfect for commercial, hospitality, institutional and upscale residential interiors. Beads pendants are manufactured from spun stainless steel spheres and are available in Chrome, Copper, Gunmetal or White colors. Beads is part of the Winnie Lui lighting collection for innermost.



BEADS at Private Residence
(Hong Kong)

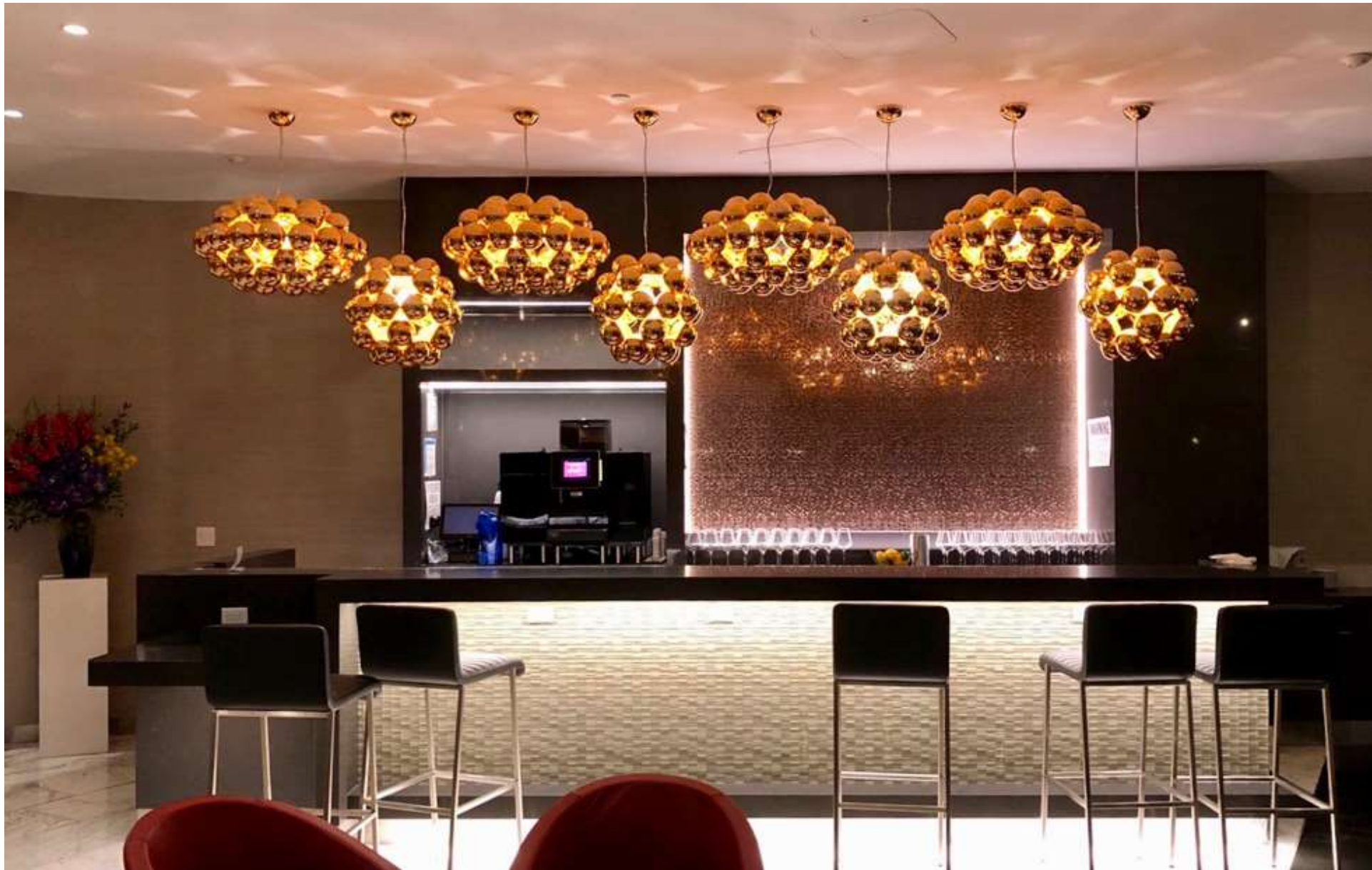


BEADS at Axcel E'Lever
(Japan)



BEADS at Gaucho Restaurant (Hong
Kong)

Beads, by Winnie Lui





The designer, James Bartlett, took these traditional forms and subverted the details, so that the classical scalloped details, usually found on the outside of columns, encircle the interior of the shade. The effect is reminiscent of the crimped edge of a seashell, with a beautiful, smooth marbled exterior. The detailing can only be seen from certain angles, and the pendant looks particularly intriguing from below.

Doric

By James Bartlett



Doric

By James Bartlett



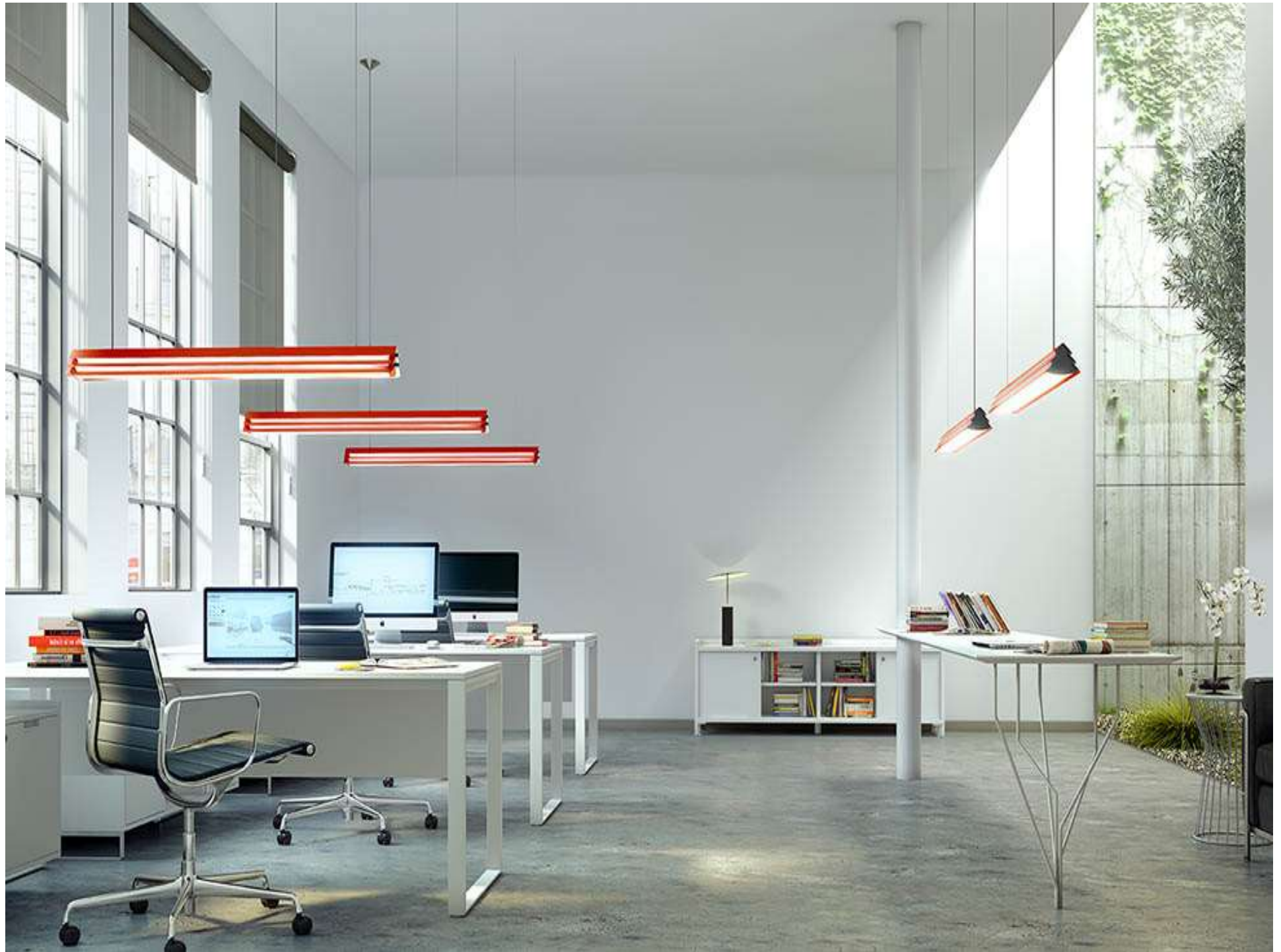
Gable

Gable is a long minimal and dimmable LED work-space task-light by Jarrod Lim for innermost available in red and in white extruded aluminum. Jarrod Lim literally puts a roof over our heads with the iconic shape of Gable. Simultaneously playful and functional it hides a technically advanced interior.

Aluminum and steel structure with poly-carbonate diffusers allow a light spill from sides as well as the main wash from the underside.









It has been named after the German mathematician, astronomer, and astrologer who discovered the Supernova, Johannes Kepler, as it is reminiscent of black holes and portals from science-fiction. The designers, COHDA, have used highly innovative materials for this design, multiplying single LEDs over a large thin surface to widely refract the light and give the illusion of infinity. The fine material, which has been likened to hosiery from the fashion industry, creates a fascinating effect, like a kaleidoscope of light rays. With Kepler there is an opportunity to create huge and impressive light installations using very compact and lightweight units.

Kepler

By Cohda



Circus

This modern pendant lamp is made from spun aluminum with a beautifully classic shape. These contemporary pendants are inspired by the shape of Victorian Circus Fair tents. The exterior is available in textured matt white, black and grey, with a contrasting antique gold or smooth white interior.







CIRCUS at Mint Velvet
(Guildford, England)



CIRCUS at UDC Sydney
(Australia)

Circus, by Corinna Warm



STUPA Stupa is an atmospheric cast resin pendant light designed by Freshwest for innermost, available in two sizes and two colorways – white and yellow.

The individual pieces that make up the lamp are joined and hand finished individually on a lathe, then polished. The sharply defined ridges around the design allow different amounts of light through and add to the visual impact of the piece.



LATITUDE Latitude is a decorative directional and dimmable LED pendant spotlight designed by Flynn Talbot for Innermost. Flynn transforms the average spotlight to make it the centrepiece rather than mere support lighting in this simple design with its 'cage' like structure. A clever suspension cable allows the pendant to be pointed in any direction, creating a flexible light that activates the surrounding space. Powered with a high quality LED unit the assembly is also fully compatible with common dimming systems. Latitude won the Certificate of Excellence for Best Lighting in Professional Product Design category, at the prestigious A&D Trophy Awards 2014

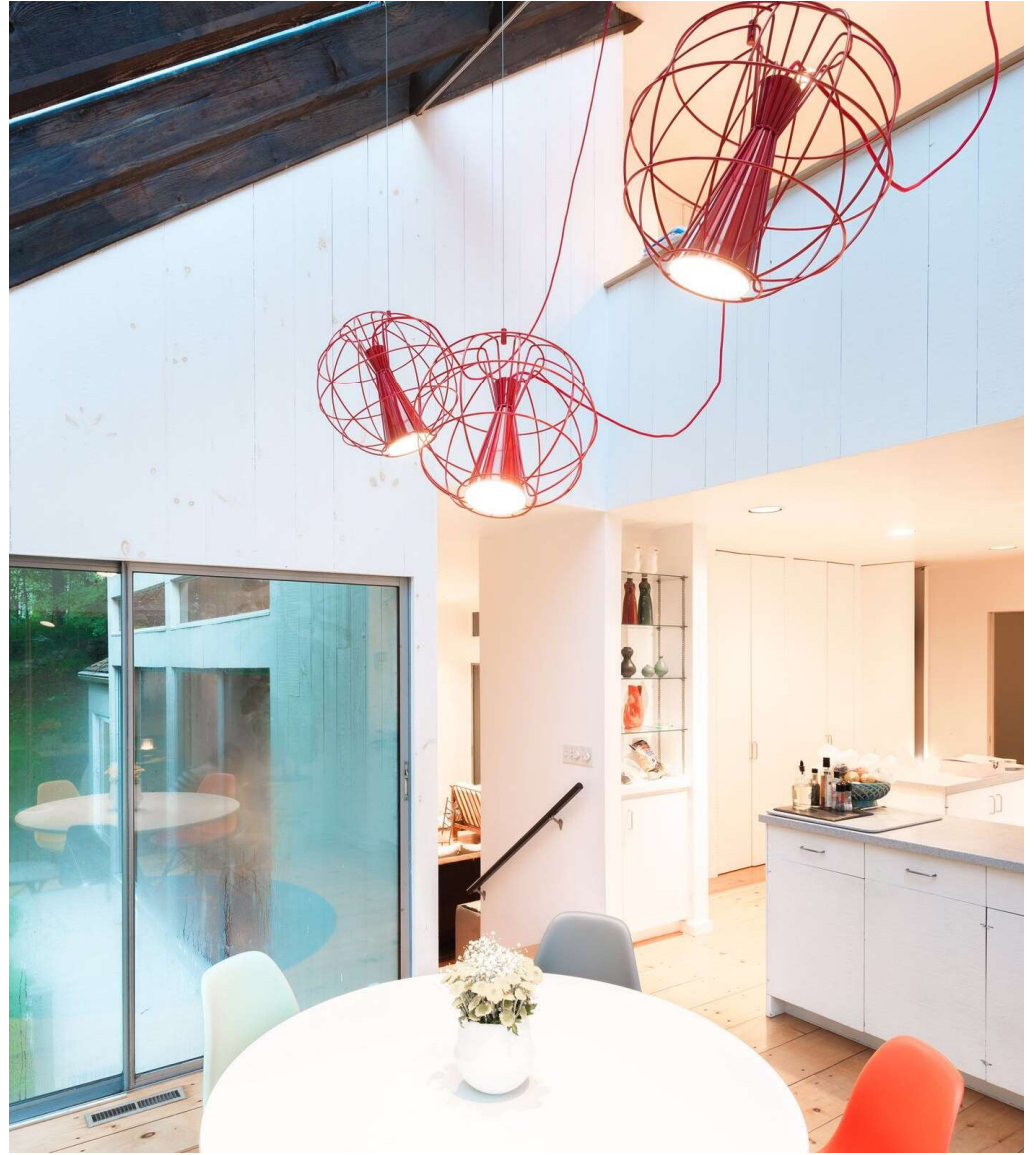








LATITUDE at innermost USA house



Latitude, by Flynn Talbot



BUBBLE Bubble is a decorative spotlighting pendant resembling a line of stainless steel balls increasing in size. Available in a number of different finishes and colourways. The highly polished metallic finishes and strong solid tones are designed to work in installations with the popular Beads and Boule pendants



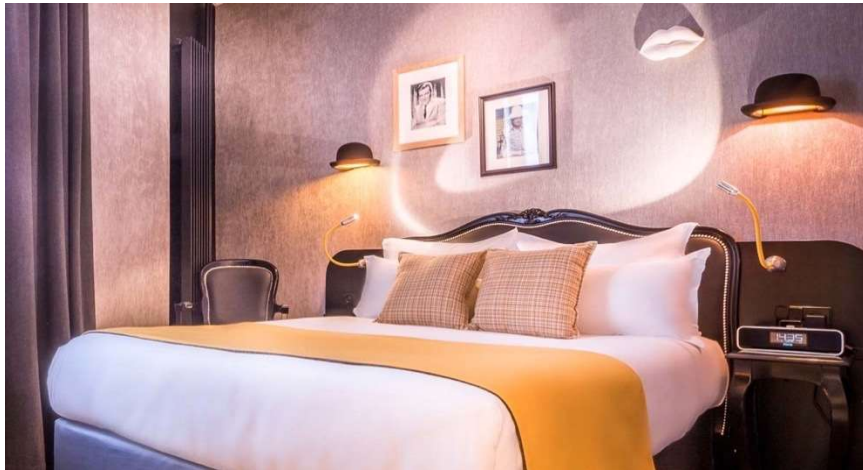


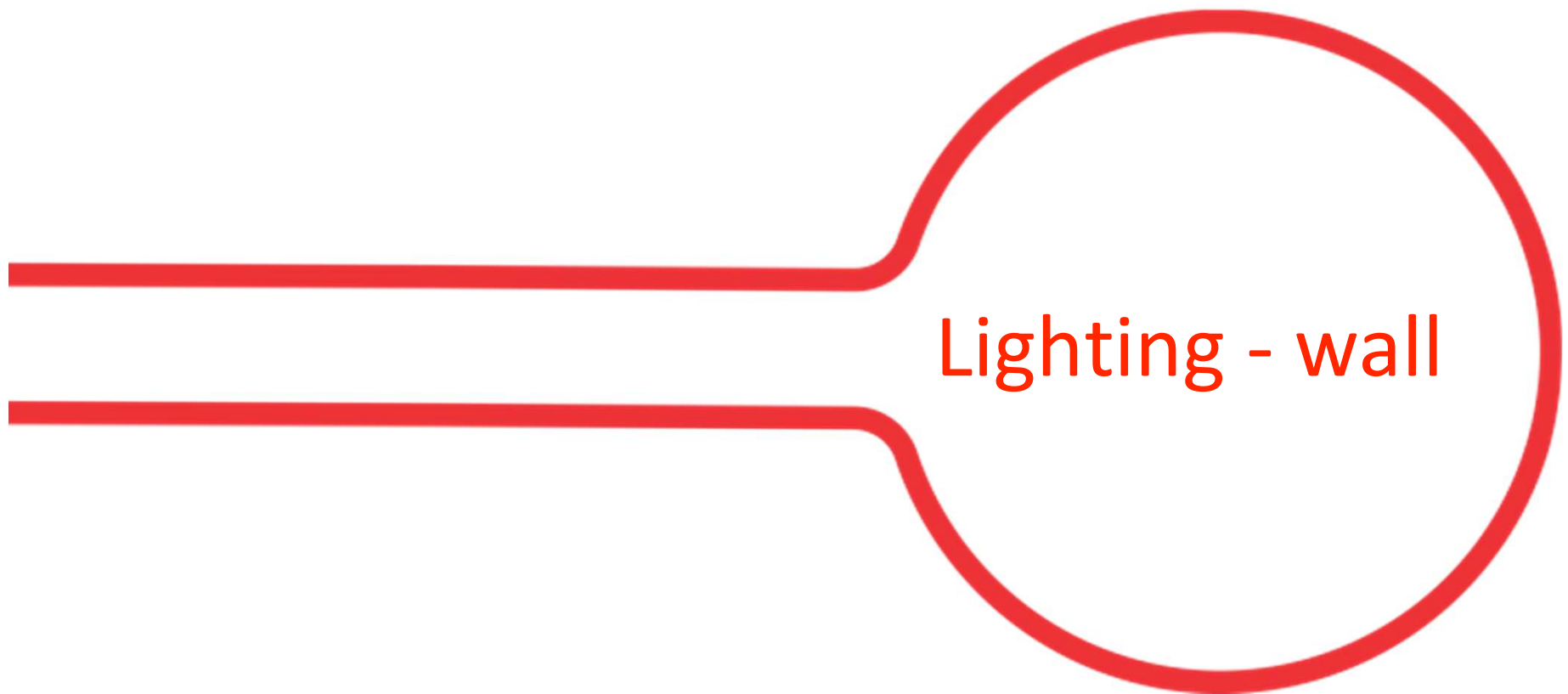


JEEVES AND WOOSTER These pendants are based on the classic British characters from P.G Wodehouse's 'Jeeves and Wooster' series. Wooster is the jovial but empty-headed young gentleman, and Jeeves, his improbably well-informed and talented valet. Wooster is therefore the top hat, a symbol of aristocracy and well-to-do society, and Jeeves, the practical, well-rounded bowler.

Jeeves & Wooster are a blend of Great British tradition and modern technology. These hand-made wool felt hats are lined with an aluminum inner shell to create quirky pendant lights. This pair of pendants work well on their own, as a duo, or mixed into bigger groups







YOYWall

By YOY



YOYWall is arguably the most minimal wall sconce possible, interacting with and using the wall in more than just a supporting role.

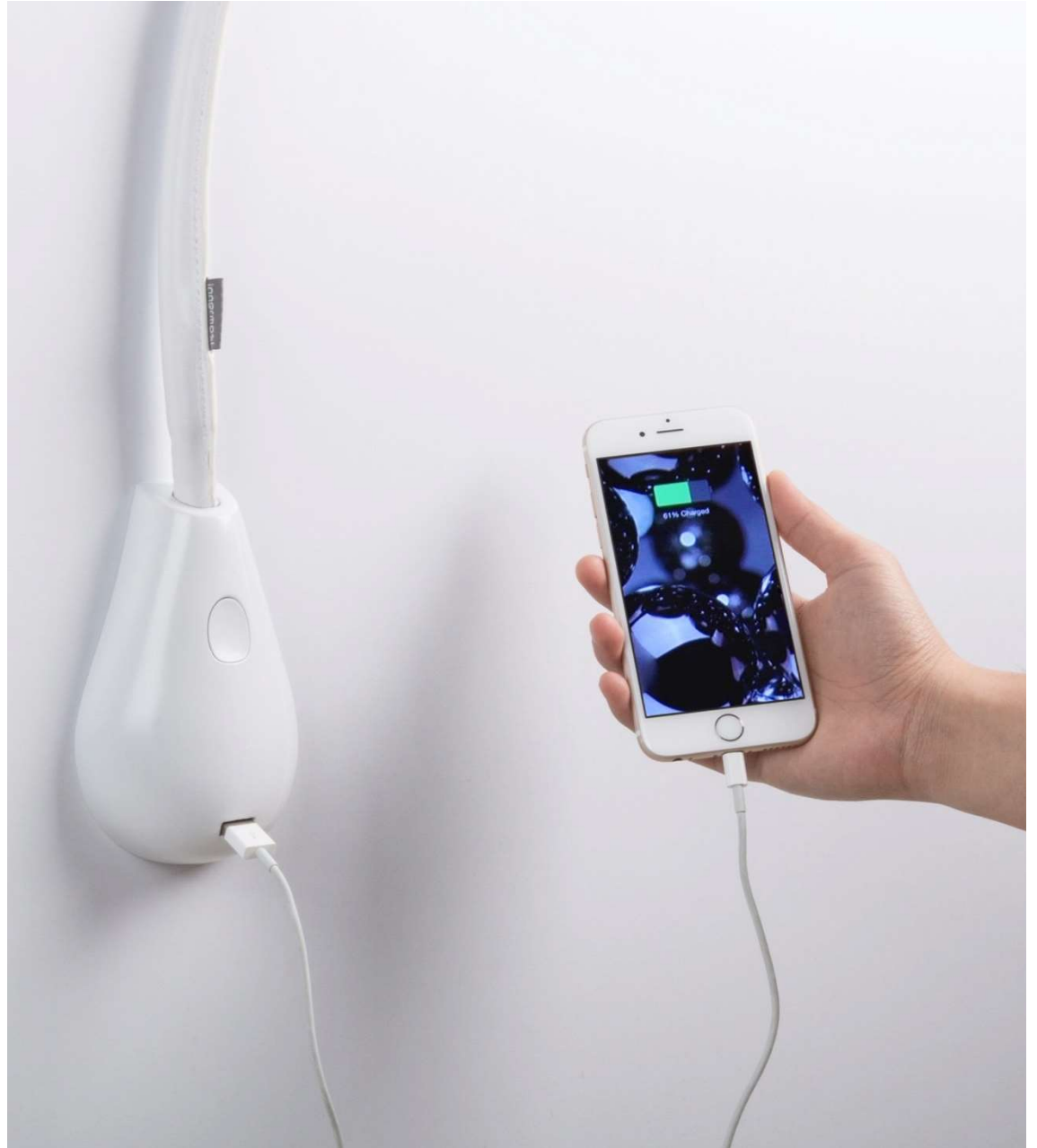


Cobra

By Innermost

- Wall mounted task lighting
- Adjustable neck
- Natural leather finish
- Touch activated switch
- USB port charging station





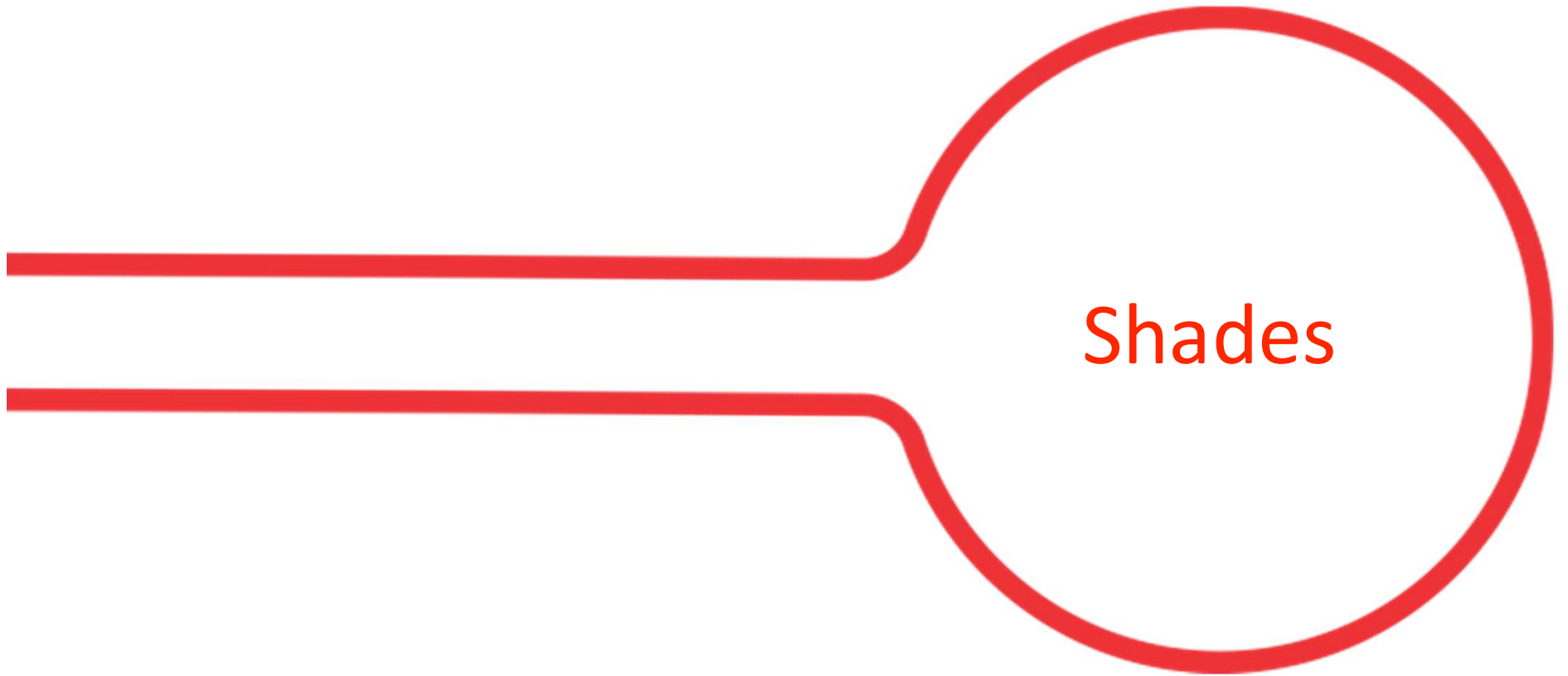
Cobra, by Innermost



Bracket is a low profile high output LED wall light with a minimal slim section based on the overall dimensions of our Bolt wall-light. A simple basic item that is well considered in proportion, function and technology. An unassuming high performance LED lamp that will fit anywhere.

Bolt is a low profile high output LED wall light with decorative bolts adorning its face highlighting the honesty in construction. A building's history weighs heavily on each nut and bolt. Reclaim that industrial detail in a contemporary space with this dimmable wall-light. Bolt features some of the most up to date LED module technology together with an innovative design to dissipate heat using its own slim aluminium profile.





Lighthouse

By Innermost

Take one light bulb
and multiply.

An array of lenses help create
this stunning optical effect as
the light source
is duplicated.

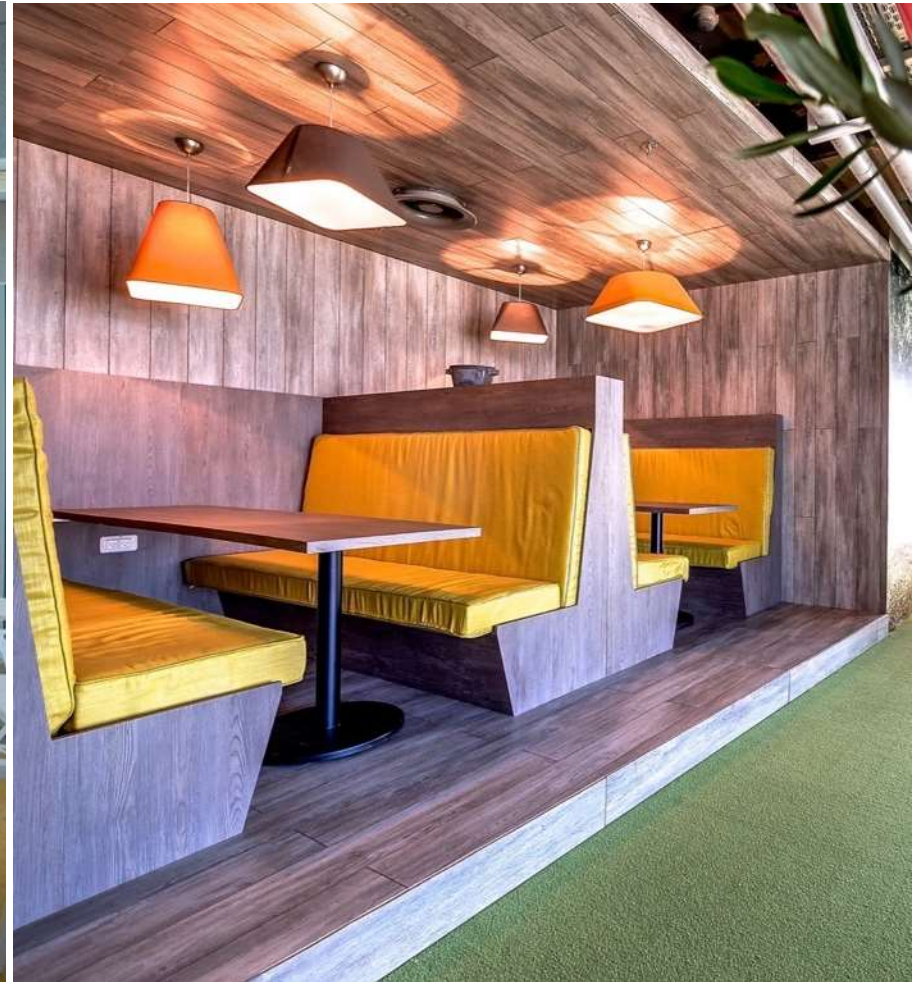


RD2SQ

By Russell Cameron



RD2SQ at Coll Blanc Restaurant, Grandvalira Ski Resort
(Andorra)



RD2SQ at Google Office
(Tel Aviv, Israel)

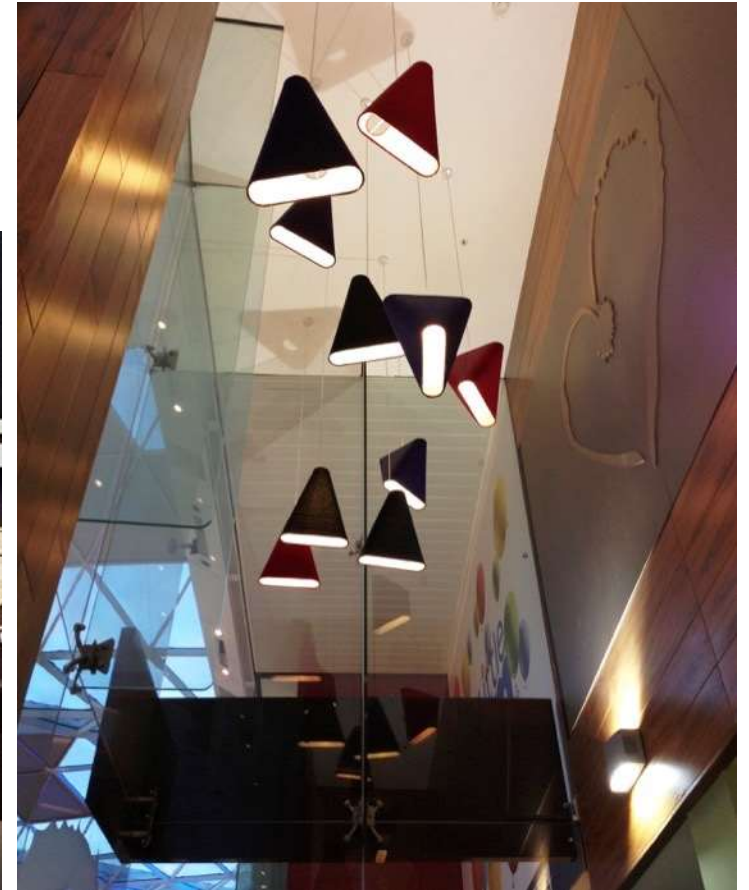
RD2SQ, by Steve Jones



MnM - MnM is a simple but distinctive fabric lampshade designed by Innermost co-founder, Steve Jones. To create this contemporary lampshade, Steve takes the familiar shape, giving it a subtle change to create something totally different. MnM is the proof that you only need to alter one part of a known formula to have a unique recipe.

MnM

By Steve Jones



Kobe

By Russell Cameron



KOBE at innermost Office
(Hong Kong)



KOBE at Apartment Complex
(Australia)

Kobe, by Russell Cameron



NEW 2019

Portobello

Constructed from hand spun aluminium, it draws inspiration from the simplicity and functionality of industrial pendant lights of a bygone era. With its scale, defined outline and its two tone colour scheme (coloured exterior, white interior) this large contemporary classic pendant light will have an impact on any room.

Available in yellow, black, white and red with clear PVC cable, and white interior







Purl Pendant

Purl takes our popular [DropLED](#) line to a new dimension. With the addition of a simple cover and screw on frosted glass ball DropLED becomes Purl - just about the simplest dedicated LED pendant solution on the market today.







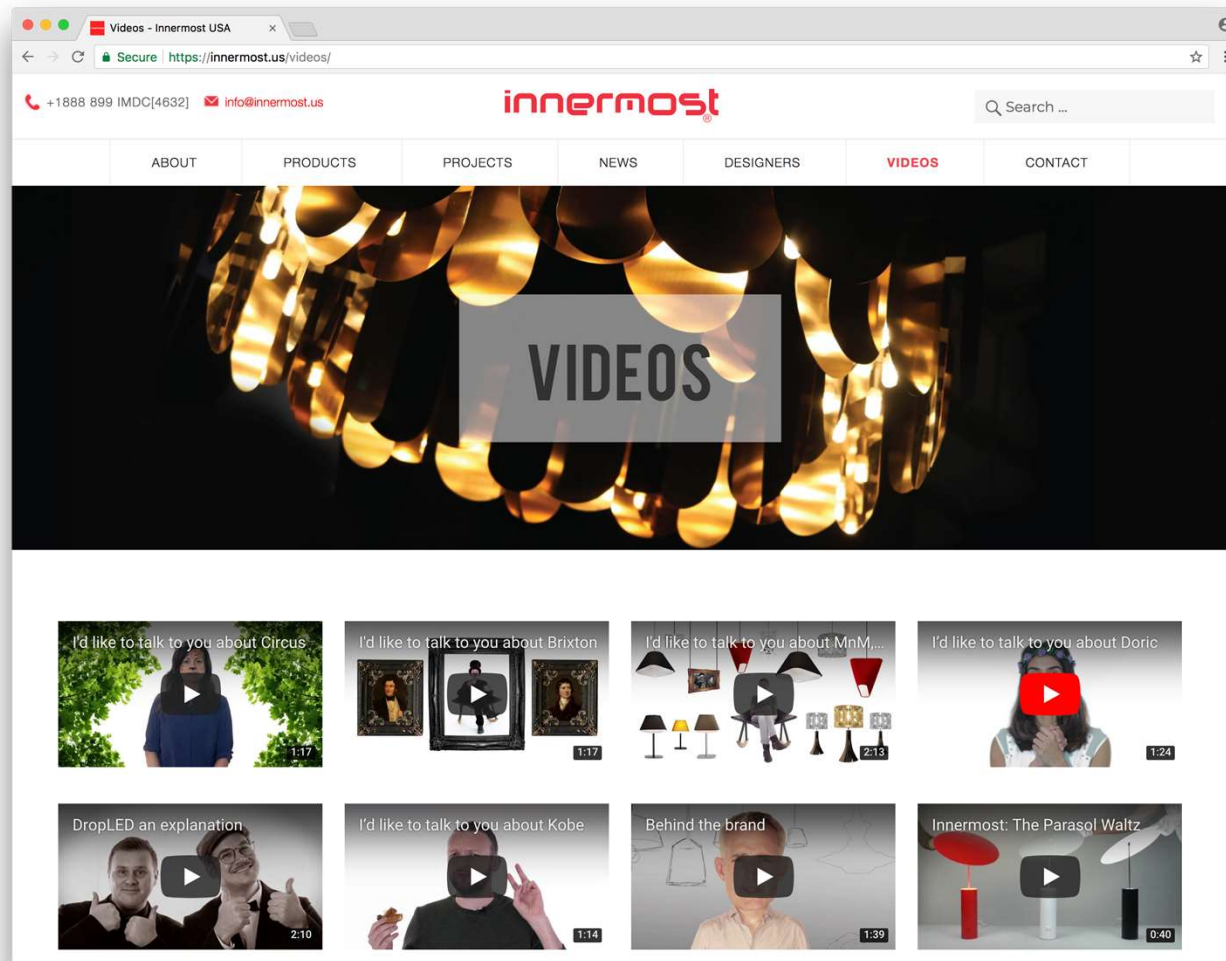
BUD Bud is a go-anywhere do-anything LED lamp. Whether illuminating a night picnic, a romantic rooftop dinner or an indoor play den, this rechargeable portable lamp frees you from the constraints of cables, with a three step dimming function to adjust to any situation.

Imitating nature, the globe bulb is shelled by two petal-like forms which appear to simultaneously hold and protect the light. Interact with Bud's bulb to activate the light and dimming function. The tapered cylindrical form encases the translucent globe on top of a thin silicone pad that allows it be pushed to adjust dimming. Push down on Bud's bulb to activate the light and press again to increase the light intensity from 25% to 50% to 100%.



Innermost Videos

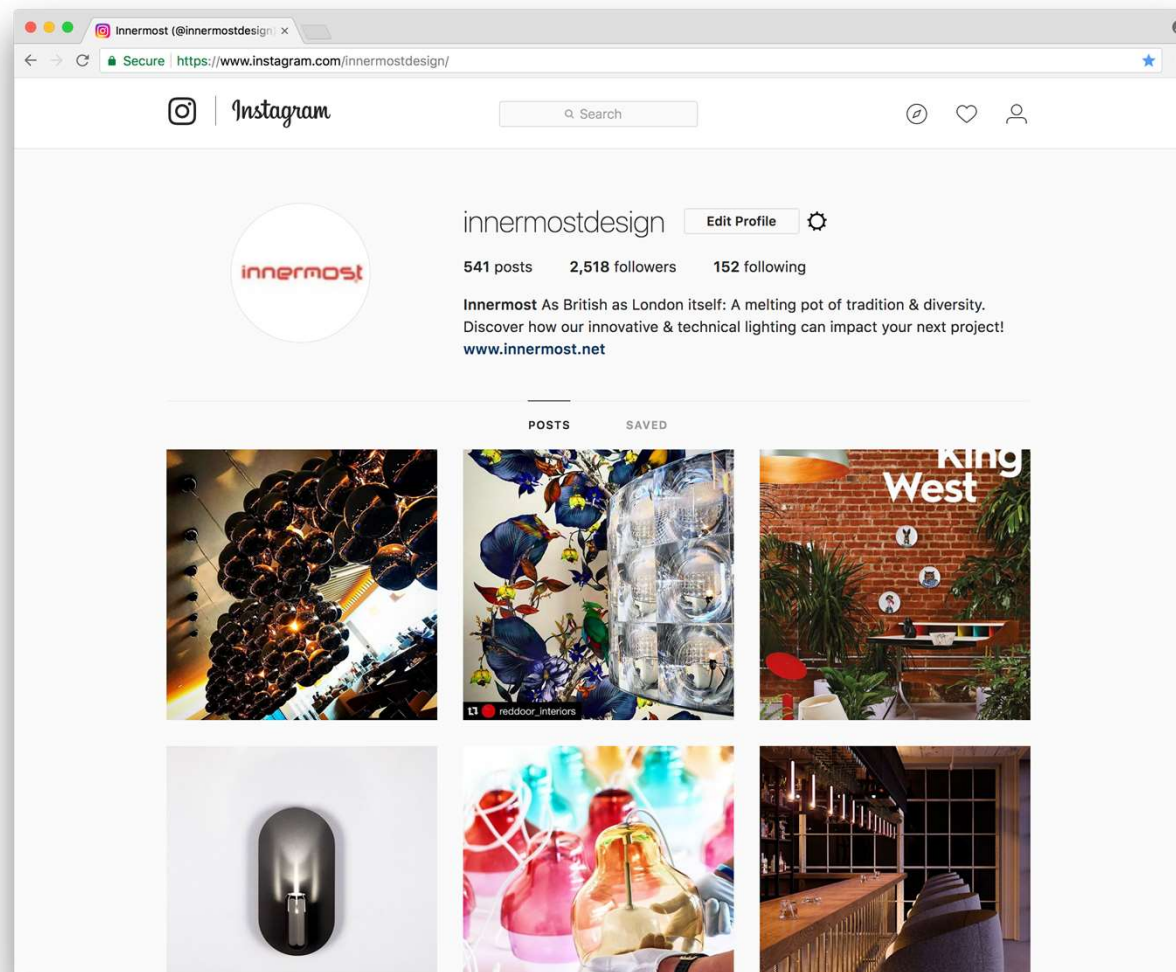
<https://innermost.us/videos/>



A collection of silly videos about serious products

Innermost instagram

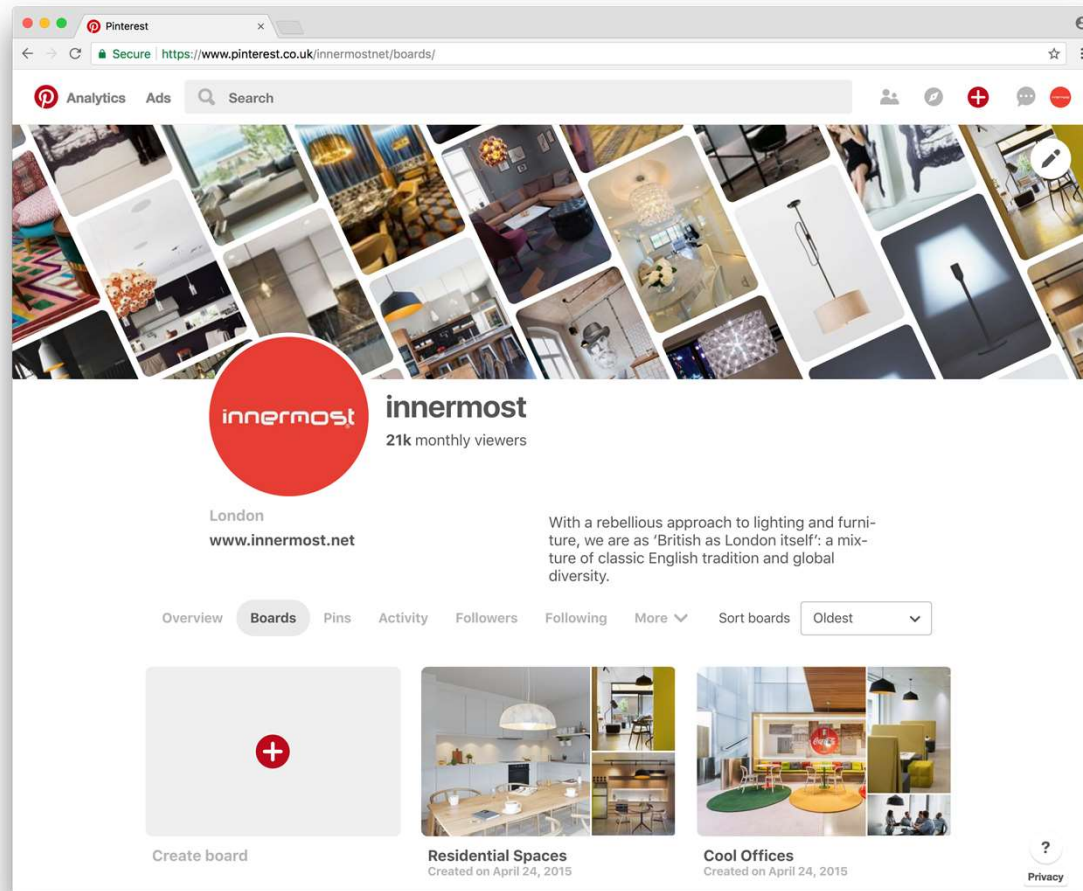
#innermostdesign



Images for our latest products, our global exhibitions and behind the scenes at London HQ

Innermost Pinterest

#innermostdesign



Follow our boards for inspiration in all things lighting, interior design and gin



innermost

UK / Europe Office & Showroom

Innermost Ltd.
2.02 - 2.04 Oxo Tower Wharf, Bargehouse Street
South Bank, London, SE1 9PH
T: +44 (0)20 7620 1808
E: info@innermost.net

www.innermost.us
www.innermost.net