




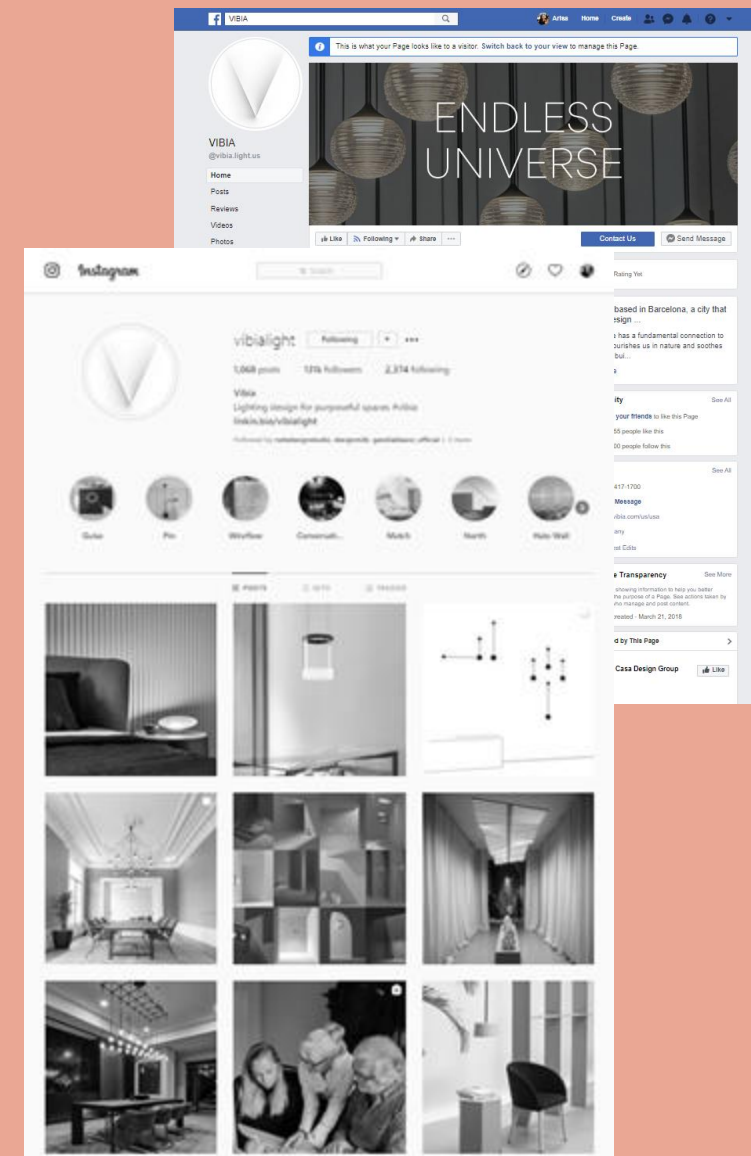
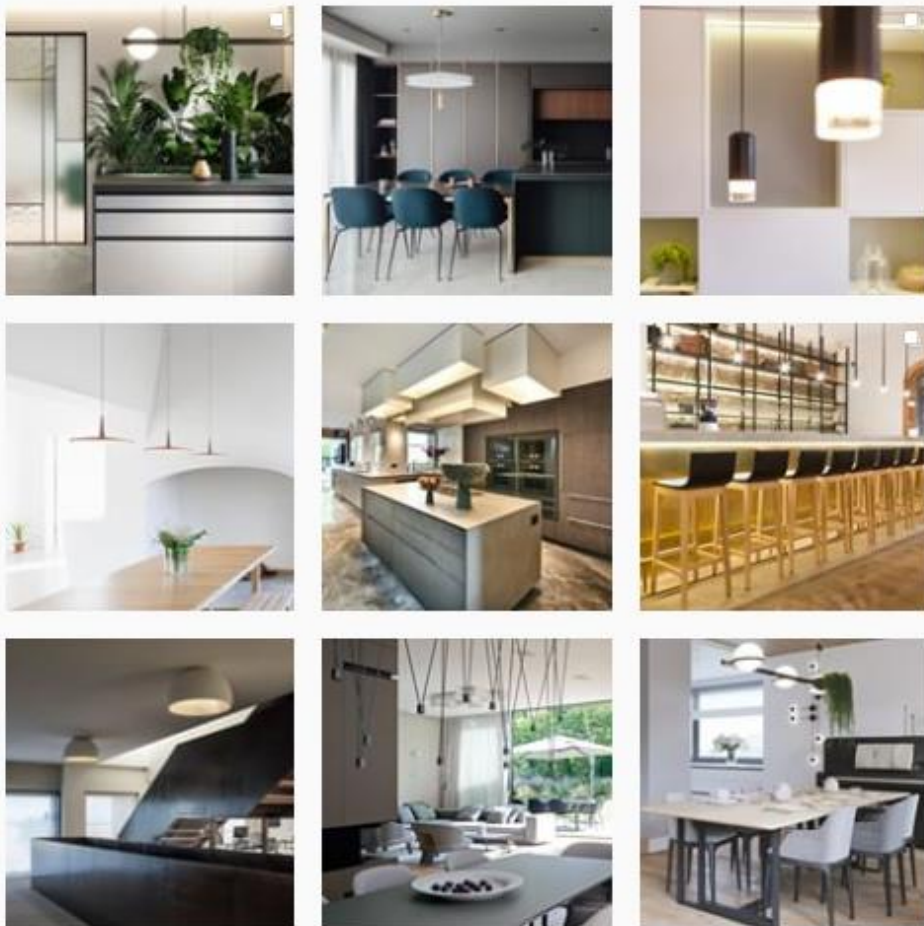


VIBIA

-  @vibialight
-  @vibia.light.us
-  @VIBIA
-  @vibialight
-  @VibiaLight

Follow us on social media to see the latest Products/Projects



Instagram @vibialight
Facebook @vibia.light.us

VIBIA
GENERAL CATALOG
2019-2020

More collections,
more possibilities



New Featured Products



Chromatica

LIGHT

SUBTLE

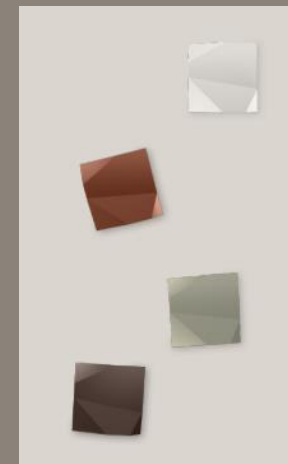
VIBRANT

BASIC / GREY / BEIGE / BROWNS / TERRA / BLUES / GREENS / OCRE

DARK

New Vibia color palette

- Jazz
- I.cono
- Funnel
- Skan
- Warm
- Wind
- Origami



Updates

- Flamingo, new XXL + 1527
- Alpha. Ref. 7942 (7941 disco'd)
- I.cono 0712
- Plus LED
- Wind LED
- Ameba LED



Tube

Design by Ichiro Iwasaki



INTERIOR
DESIGN

Tube

Design by Ichiro Iwasaki

Collection of pendant and ceiling lamps that transmit warm and adjustable ambient light.

Tube is a modular LED lighting system that allows the user to create uniquely functional and imaginative systems with ease. Composed of four different size of shades and a black tube that can grow vertically or horizontally as desired, producing pendant, ceiling light or combination groupings dependent on the architecture or design intent of a space.



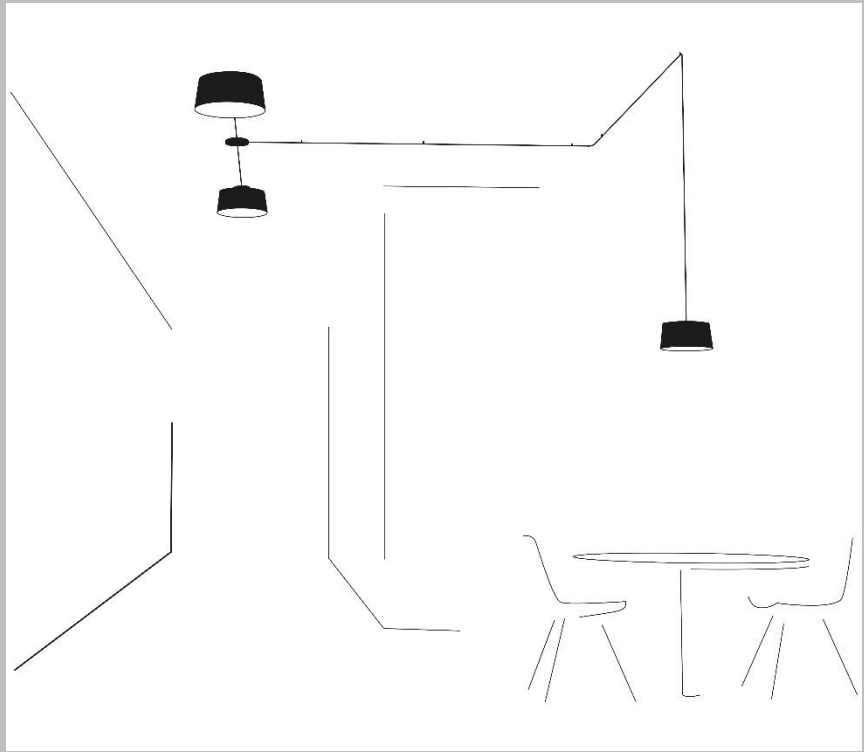
Applications



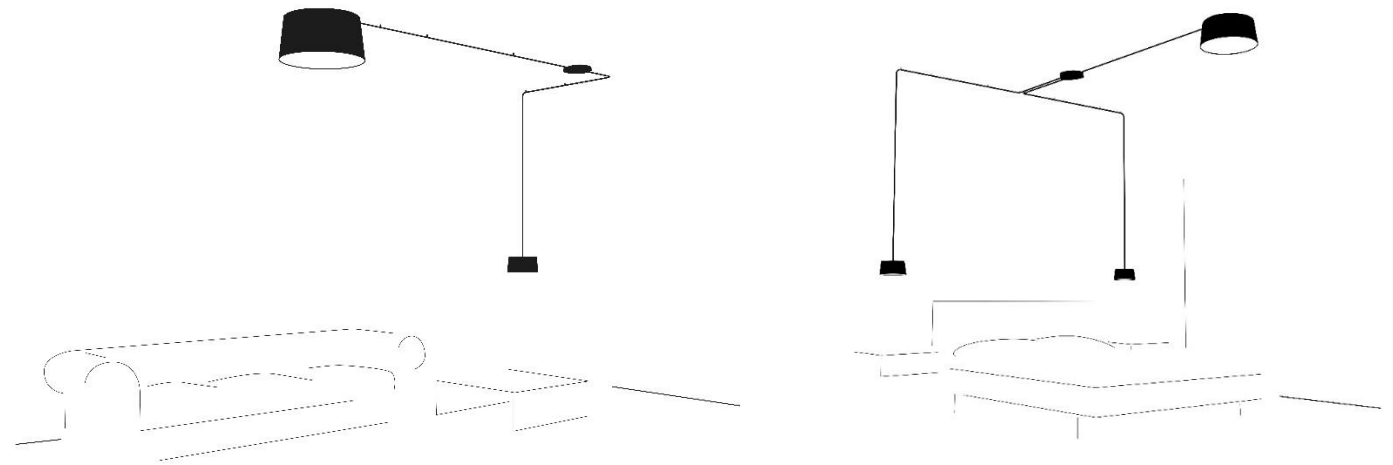
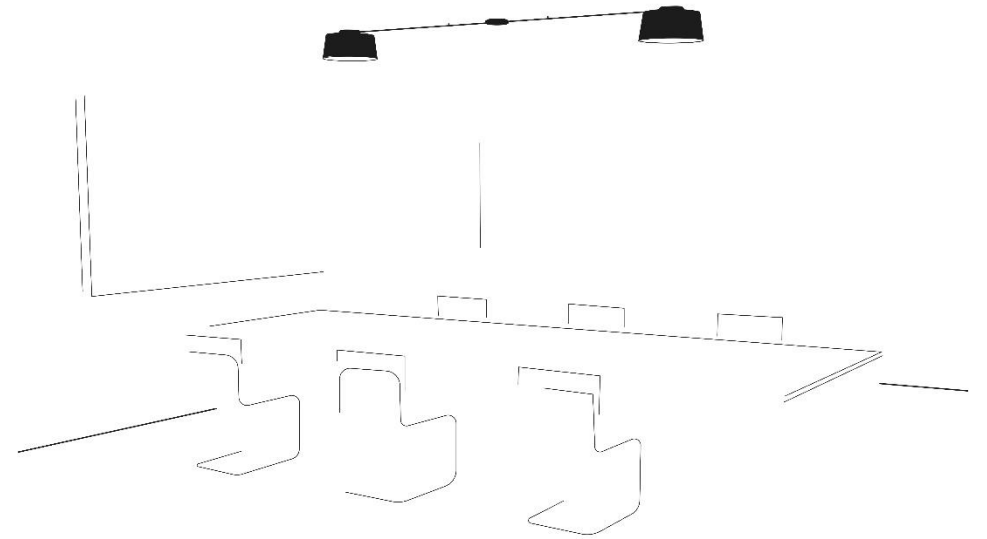
Tube



Concepts



Tube



Lighting Effect

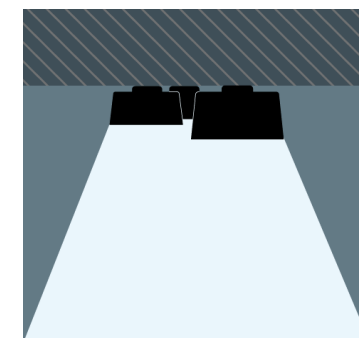
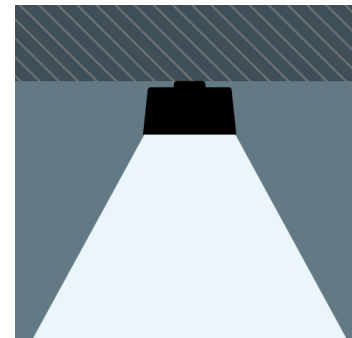
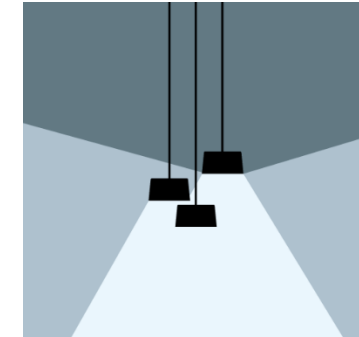
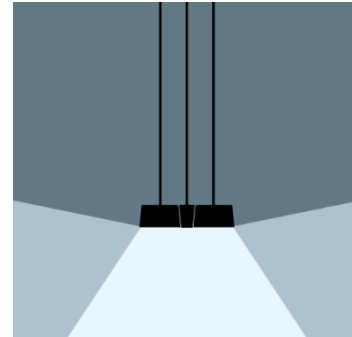
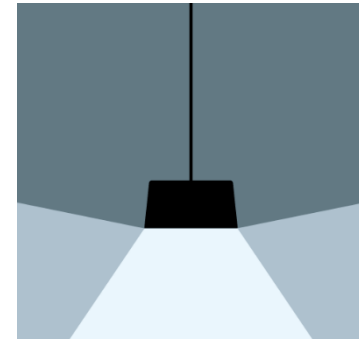
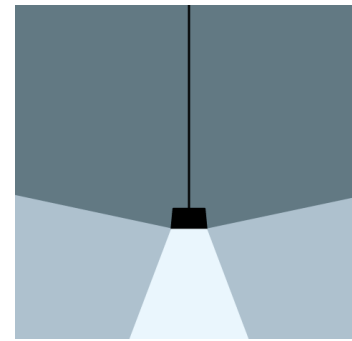
General lighting

The light source is located atop a lacquered aluminum panel. It reflects evenly throughout, allowing for a completely hidden LED source.

The output exits through the bottom of the opaque shade.



Tube



Specifications

Pendants

LED Light Source

- Includes 10.5W, 13W, 20W or 25W 700mA LED plate.
- 1450 - 5220 lm.
- 2700 K. CRI> 90.
- (Optional) 3500 K.

Driver 700mA. EldoLED Model 361/S.

- 120-277V. 50/60Hz.
- Dimming: 0-10V.
- (Optional) DALI or Lutron Eco

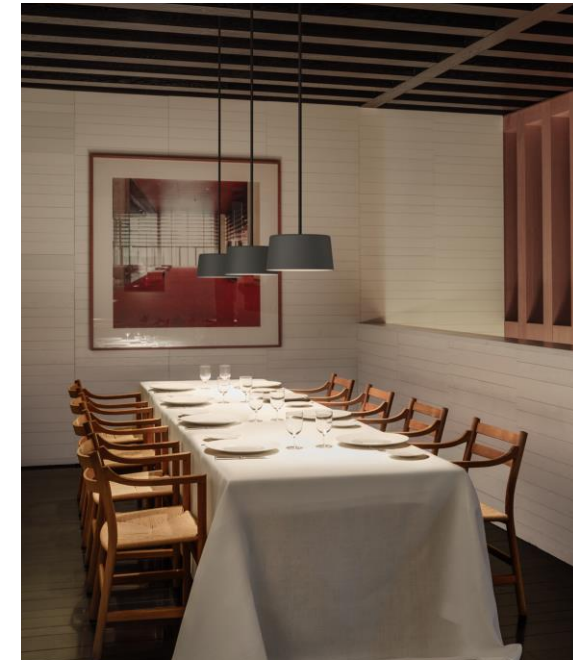
Materials

- Body: Aluminum
- Canopy/Tube: Steel

Finishes

- White (10) NCS S 0300-N
- Grey L2 (15) NCS S 2500-N
- Grey M1 (16) NCS S 4500-N
- Grey D1 (21) NCS S 7000-N

Tube



Specifications

Ceiling

LED Light Source

- Includes 13W, 20W or 25W 700mA LED plate.
- 1740 - 8120 lm.
- 2700 K. CRI > 90.
- (Optional) 3500 K.

Driver 700mA. EldoLED Model 361/S or 561/S.

- 120-277V. 50/60Hz.
- Dimming: 0-10V.
- (Optional) DALI or Lutron Eco

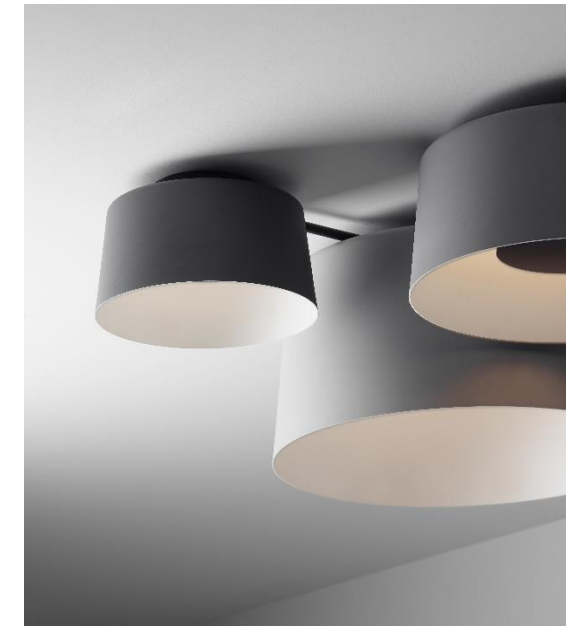
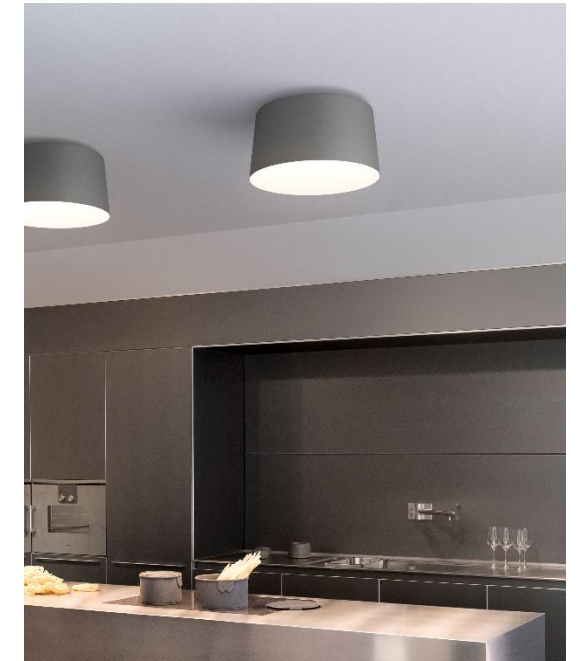
Materials

- Body: Aluminum
- Canopy/Tube: Steel

Finishes

- White (10) NCS S 0300-N
- Grey L2 (15) NCS S 2500-N
- Grey M1 (16) NCS S 4500-N
- Grey D1 (21) NCS S 7000-N

Tube



Bamboo

Design by Antoni Arola & Enric Rodríguez



Bamboo

Designed by Antoni Arola & Enric Rodríguez

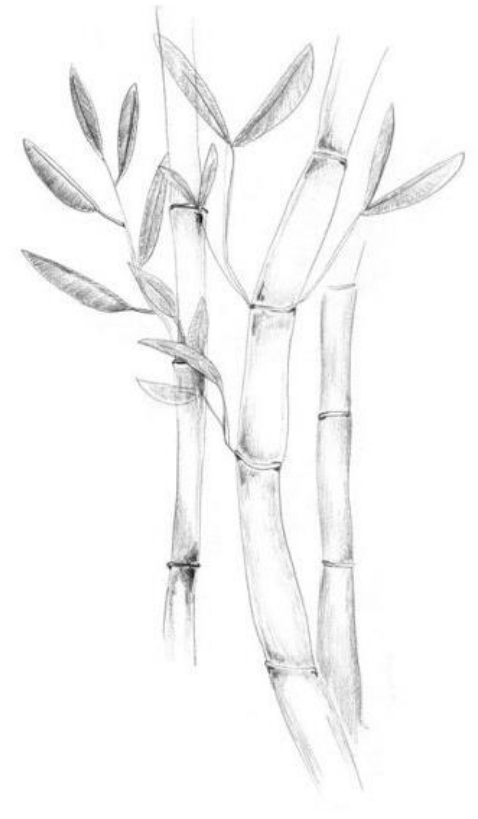
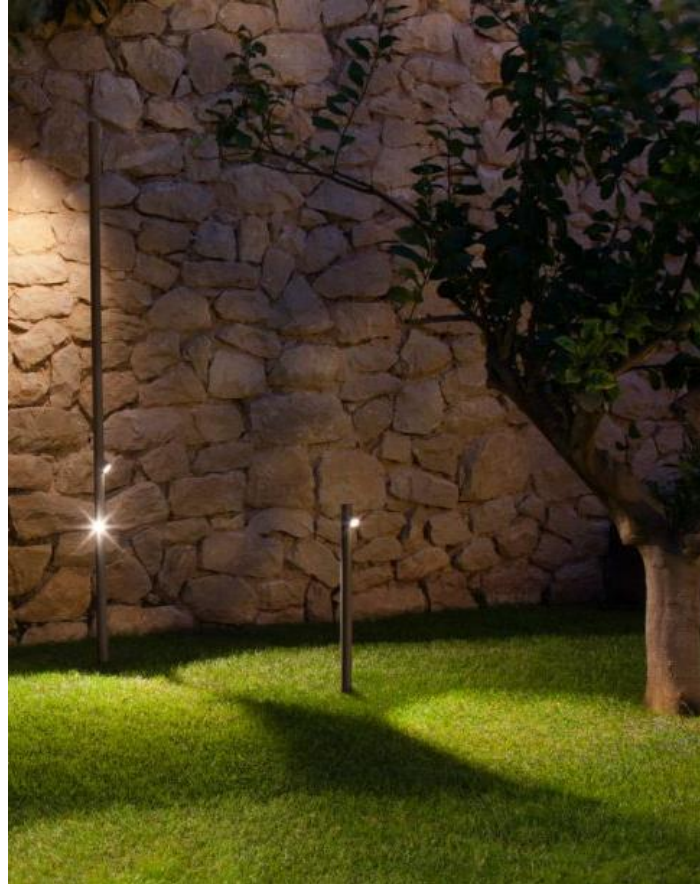
Bamboo's lean, natural form perfectly lends itself to an outdoor setting. Studded with LEDs, it seamlessly integrates with the landscape while adding a wash of light to walkways and common spaces.

The Bamboo outdoor lights are manufactured in a natural color palette: beige green and oxide.



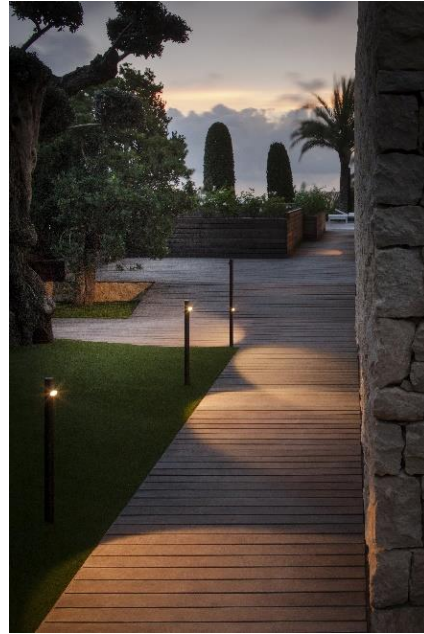
Concept

Reminiscent of its namesake plant, Bamboo features a slender stalk with an organic profile that perfectly lends itself to a garden environment, serving as a subtle punctuation point on a walkway and casting a warm wash of light.



Bamboo

Applications



Bamboo

Lighting effect

- Bamboo integrates one or more focal points of LED light, illuminating without saturating.
- Each LED provides a focused spot of light that creates an ambient lighting effect.

Bamboo



Specifications

LED Light Source

- Includes multiple LED 2.1W 700mA.
- 200 lm. 2700 K. CRI> 80.
- (Option) 3500 K.

Driver 700mA.

- 120V. 50/60Hz.
- Dimming: No.

Materials

- Cane: Resin + fiberglass.
- Diffuser: Methacrylate.
- Surface accessory: concrete

Finishes

- Beige green
- Oxide

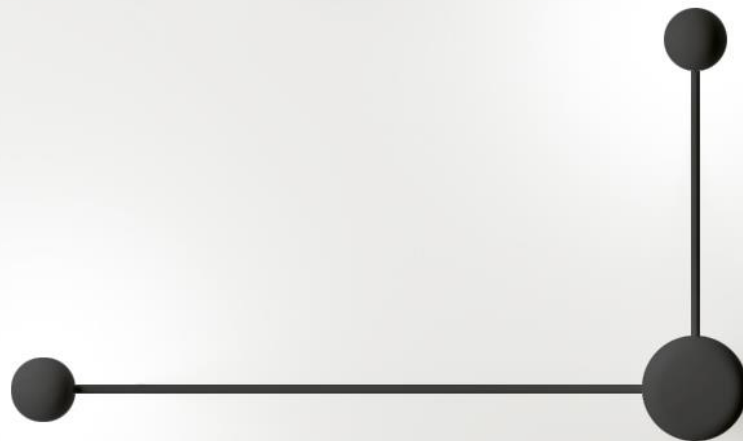
Bamboo





Pin

Design by Ichiro Iwasaki



Pin

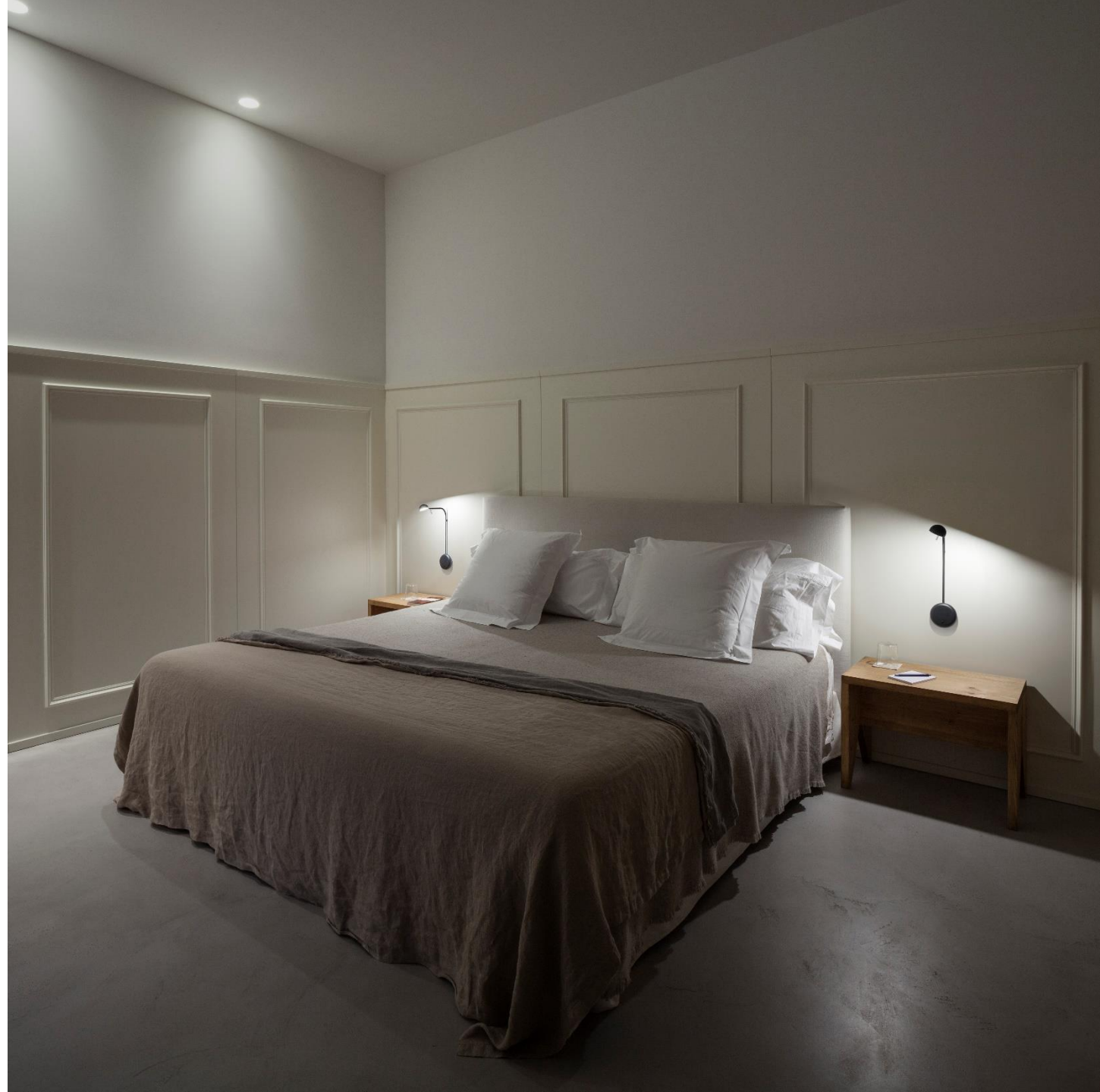
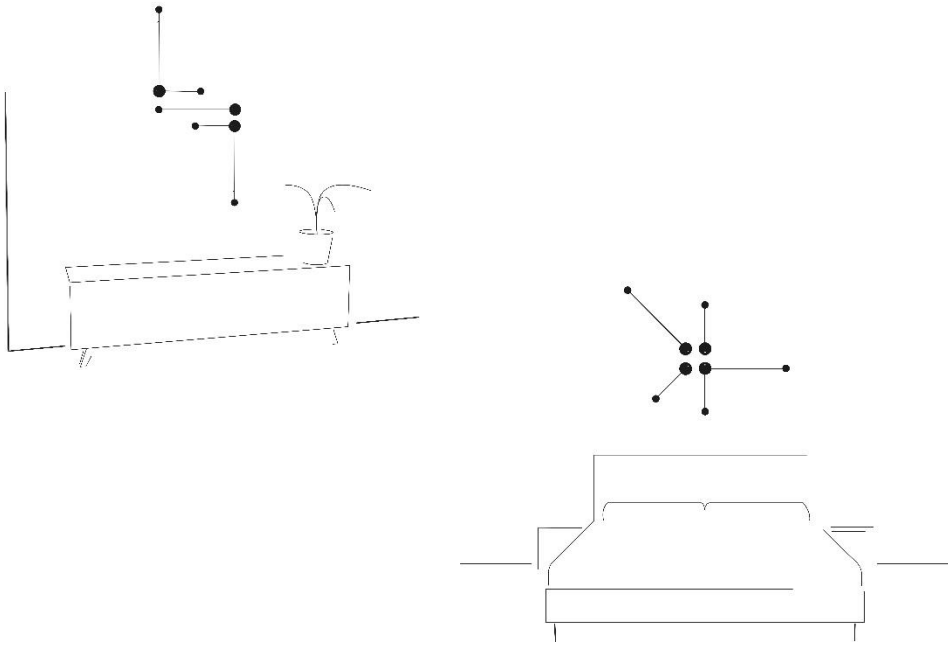
Designed by Ichiro Iwasaki

A striking interplay of geometric shapes that double as abstract wall décor with LED-powered tips that radiate in a gleaming nimbus of light.



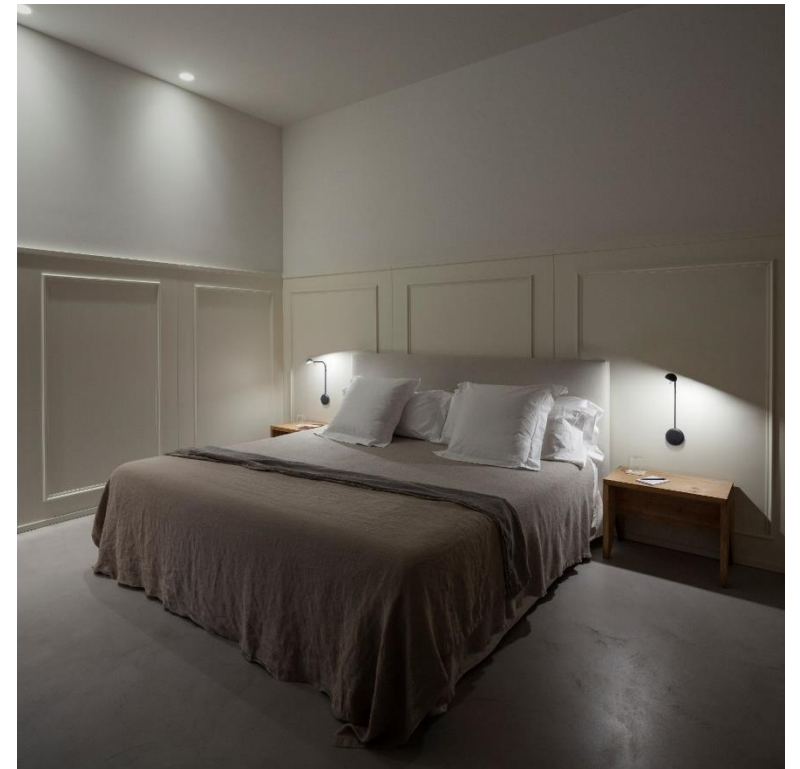
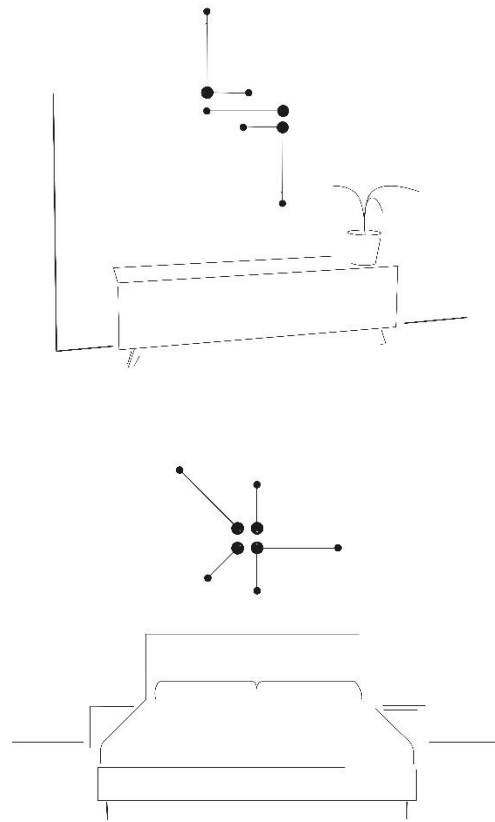
Pin

The Pin collection seeks continuity with familiar lighting traditions and the practicalities of daily life but also benefits from the great advances in lighting technology over recent years



Concept

The Pin collection seeks continuity with familiar lighting traditions and the practicalities of daily life but also benefits from the great advances in lighting technology over recent years



Pin

Applications



Pin

Lighting effect

- Indirect directional light



Pin

Specifications

LED Light Source

- Includes LED 4.5W 350mA.
- 2700 K. 450 lm. CRI> 90.
- (Optional) 3500 K.

Driver 350 mA.

- 120V. 50/60Hz.
- Dimming: No.

Materials

- Materials
- Head: Aluminum.
- Diffuser: Polycarbonate.
- Stem: Steel.
- Base: Zamak.

Finishes

- Matte black
- Matte beige

Switch on back-plate

Vibia color palette personalization
available



Pin

Tempo

Design by Lievore Altherr



Tempo

Design by Lievore Altherr

Collection of pendant and wall lamps

The Tempo collection reveals the essential essence of lamp shades from different cultures throughout our collective history.

Each of the three different glass diffusers provides different lighting effects according to its distinct form.

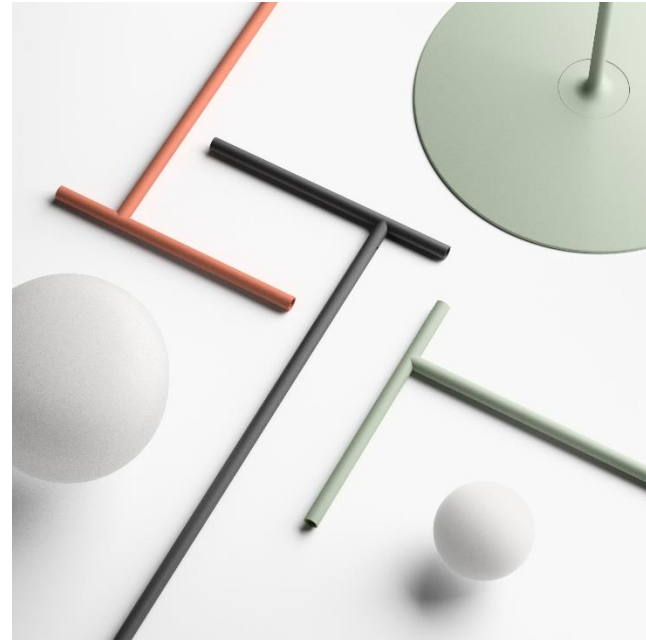


Concept

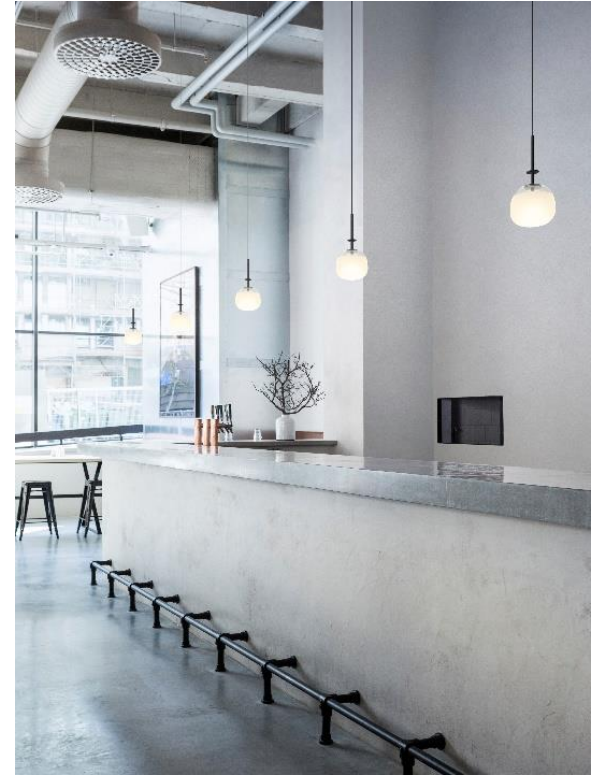
"In Tempo the use of LED has allowed us to lighten the archetypal forms of light, allowing the lamp to be less invasive in contemporary environments"

Lievore Altherr

Tempo



Applications



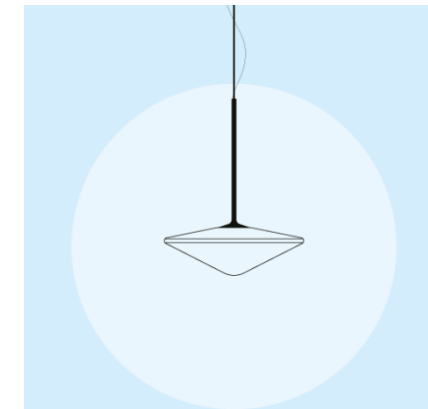
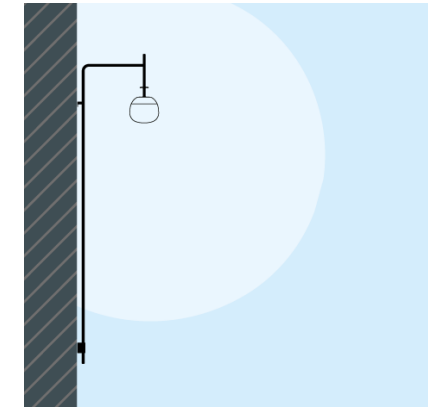
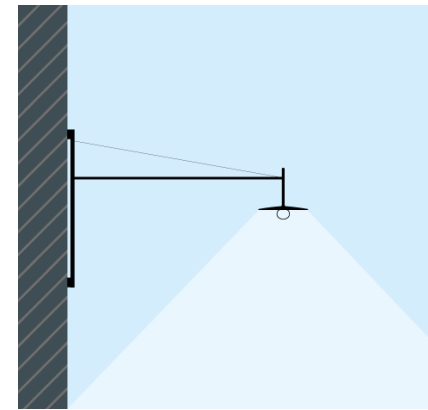
Tempo

Lighting Effect

Each of the three different glass diffusers provides different lighting effects according to its distinct form.

- One is a classic bulbous form under a disk-shaped reflector that directs an ambient light downwards.
- Another reinterprets the classic milk glass globe through a gently rounded oval shape that becomes progressively translucent and emits a general ambient light.
- The third is a diamond-shaped version of the milk glass lamp, faintly echoing the traditional schoolhouse, which provides a diffuse general light.

Tempo



Specifications

LED Light Source

- Includes a 4W350mA LED plate.
- 441 lm. 2700 K. CRI> 90.
- (Optional 3500 K.)

Driver 350mA. EldoLED Model 161/S.

- 120-277V. 50/60Hz.
- Dimming: 0-10V.
- (Optional) TRIAC or DALI

Materials

- Body: Aluminum
- Diffuser: Blown glass
- Canopy/ Wall structure: Steel
- Cable: Black
- Wall versions feature recessed driver for seamless look

Finishes

- Graphite (18) ADAPTA RF9913WX
- Terracotta (35) NCS S 4040-Y70R
- Green (62) NCS S3010-G20Y



Puck Wall Art

Design by Jordi Vilardell



Puck Wall Art

Design by Jordi Vilardell

Collection of wall lamps that transmit warm and adjustable ambient light

Inspired by the iconic circle motif, Puck wall art's simple, round forms can be superimposed on one another, lending an organic sensibility. Displayed as a pair or grouped together in customized installations, the orbs appear in silhouette, recalling a solar eclipse and forming a moody wall mural that pulses with a soft glow.



Applications

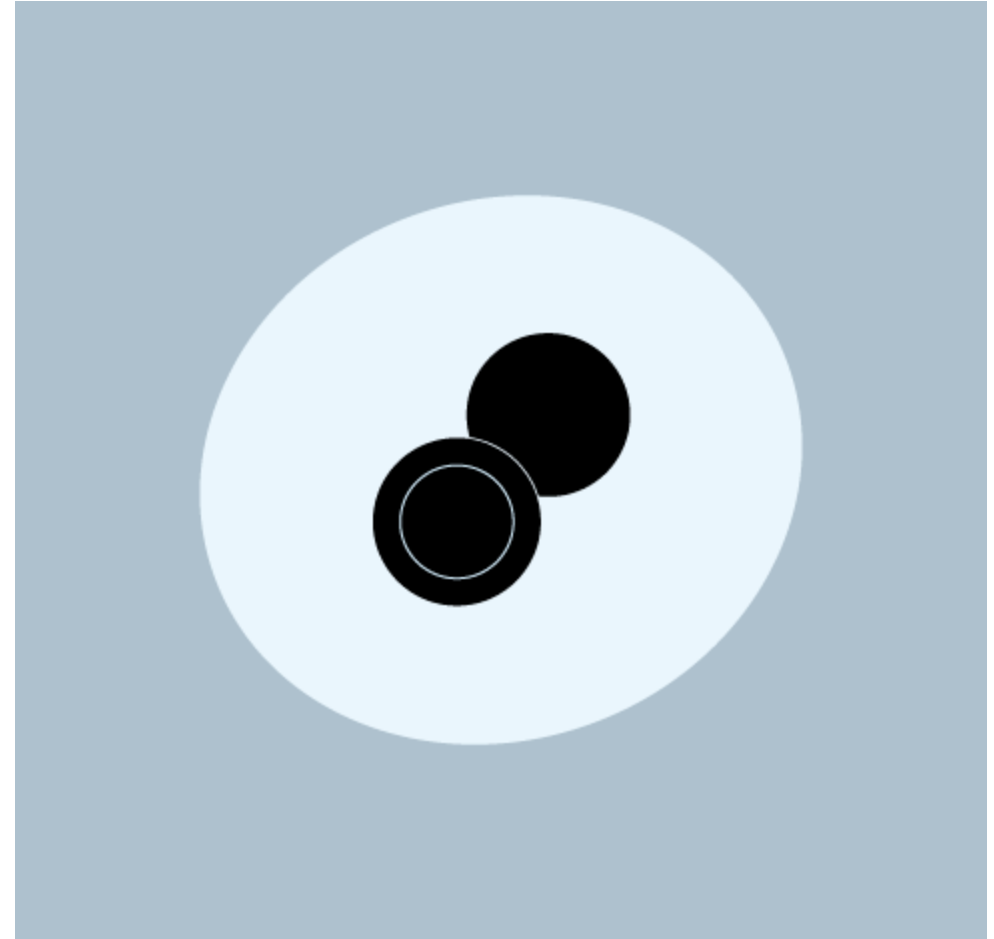


Puck Wall Art

Lighting effect

- Ambient indirect light

Puck Wall Art



Specifications

LED Light Source

- Includes a LED STRIP 12.6W 700mA.
- 1395 lm. 2700 K. CRI> 90.
- (Optional) 3500 K.

Driver 350mA. EldoLED Model 261/S.

- 120-277V. 50/60Hz.
- Dimming: 0-10V.
- (Optional) DALI or Lutron Eco

Materials

- Body: ABS.
- Wall support: Aluminum.

Finishes

- Grey L2 (15) NCS S 2500-N
- Grey D1 (21) NCS S 7000-N
- Brown M1 (28) NCS S 4020-Y60R

Combinations:

- Grey D1 & Grey L2 (72) NCS S 7000-N & NCS S 2500-N
- Brown M1 & Grey D1 (73) NCS S 4020-Y60R & NCS S 7000-N



vibia.com