

# TUBE

Design by Ichiro Iwasaki.

## Reference

**6115.**

## Application

Ceiling Fixtures

## Installation type

Surface mounted

## Description

Ceiling lamp with three shades of different sizes. Featuring a curved sheet aluminum shade lending a visual and material lightweight quality.

## Diffuser

Polycarbonate diffuser

## Materials

LED support: Aluminum

Canopy: Steel

## Finishes

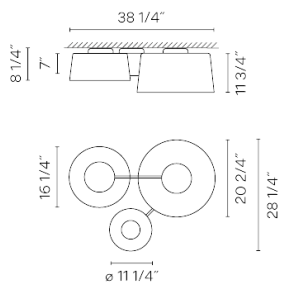


**6115-10** White (Tube NCS S 0300-N)



**6115-71** Grey L2, Grey M1, Grey D1 (NCS S 2500-N, S 4500-N, S 7000-N)

## Sketch



## Electrical characteristics

2 x LED PLATE 20W 700mA

AND

1 x LED PLATE 13.5W 700mA

AND

1 x LED PLATE 13.5W 700mA

AND

2 x LED PLATE 20W 700mA



Total 107.0 W



# VIBIA



**Light source:** 2700K CRI >90 8120 lm 138 lm/W

**Driver included:** CC - Constant Current 700 mA 120-277V 50/60Hz

**Electronic dimming:** 0-10V

**Optional dimming:** DALI or Lutron ECO

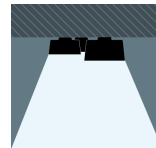
## Installation and assembly

Please see the installation manual

## Light distribution

### General lighting

Lamp for general lighting that equally distributes the light in all directions.



## Photometric data

## Certificates



  
425 Peachtree Hills Ave. NE #3 Atlanta, GA 30305  
404.876.1064 sales@illumco.com