

Palma

Design by Antoni Arola.

Reference

3734.

Application

Pendants

Installation type

Surface mounted

Description

Nature takes control of the space. With the pendant lamps, the interior ambiance takes on a life of its own with the possibility of integrating plants with the lighting compositions.

Diffuser

Blown-glass diffuser

Materials

Profile: Aluminum

Diffuser: Blown-glass

Flowerpot: PMMA (thermoplastic polymer)

Canopy: Steel

Finishes

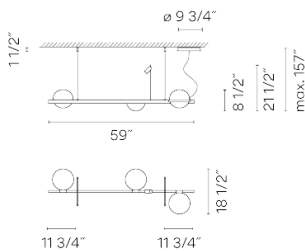


3734-18 Graphite (ADAPTA RF 9913 WX)



3734-93 White (RAL 9016)

Sketch



Electrical characteristics

4 x LED 4.6W 500mA

AND

1 x LED 2W 500mA



Total 20.4 W



VIBIA



Light source: 2700K CRI >90 1828 lm 94.34 lm/W

Fixture: 1371.09 lm 67.21 lm/W

Driver included: CC - Constant Current 500 mA 120~277V 50/60Hz

Electronic dimming: 0-10V

Optional dimming: DALI or Lutron ECO

Technical characteristics

- Plants not included

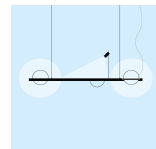
Installation and assembly

Please see the installation manual

Light distribution

General lighting

Lamp for general lighting that equally distributes the light in all directions.



Photometric data

Efficiency : 1

Coordinate system : CG

Total flux : 1301.84 lm

Maximum value : 66.04 cd/klm

Light position : C=0.00 G=1.00

Symmetry on the planes : Asymmetric

Isolux : Isolux (Floor)

Light position :

X=0.00m Y=0.00m Z=2.50m

Certificates




425 Peachtree Hills Ave. NE #3 Atlanta, GA 30305
404.876.1064 sales@illumco.com