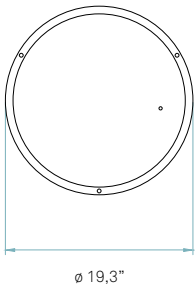
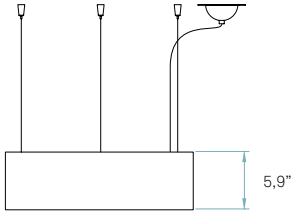




Fluorescent G-Club / SLIM SUSPENSION
by Mariví Calvo



REF. G S 24
Gea Club Slim



References

-  G S MULTIV UL
-  G S DIM 120V UL
G S DIM 277V UL

Certificates






Multivolt:
120 - 277V

Dimmable:
120 or 277V



Wood shade colors

-  20 Ivory White
-  21 Natural Cherry
-  22 Natural Beech
-  24 Yellow
-  25 Orange
-  26 Red
-  28 Blue
-  29 Grey
-  30 Turquoise
-  31 Chocolate
-  32 Pink

Components



Top diffuser
Black or White

Note: The standard top diffuser is white. Black is also available if you want no upward light diffusion.

Bottom diffuser
Matt satin acrylic



Metal canopy
Brushed Nickel
ø 3,9" - disc ø 5,5"

Electrical cable
Transparent 8 ft drop



Steel cable
3 x 8 ft drop



Box size
24 x 24 x 13"

Box volume
4,5 ft³

Weight
Gross - 17,2 Lb
Net - 8,4 Lb

Recommended tube (Not Included)



T5C



Circline Fluorescent
1 x 55 W



Ballast

NON DIMMABLE - FULHAM
1 unit - Ref. RH23-UNV-254-LT5

DIM - PHILIPS
120V - 1 unit - REZ-154 (120V)
277V - 1 unit - VEZ-154 (277V)
Standard fit: PHILIPS
For other options, please specify dimming needs.



References



Certificates



120 - 277V



Wood shade colors

- 20 Ivory White
- 21 Natural Cherry
- 22 Natural Beech
- 24 Yellow
- 25 Orange
- 26 Red
- 28 Blue
- 29 Grey
- 30 Turquoise
- 31 Chocolate
- 32 Pink



REF. G S LED 20
Gea Club Slim

Components



Top diffuser
Black or White

Note: The standard top diffuser is white. Black is also available if you want no upward light diffusion.

Bottom diffuser
Matt satin acrylic



Metal canopy
Brushed Nickel
ø 7"

Electrical cable
Transparent 8 ft drop



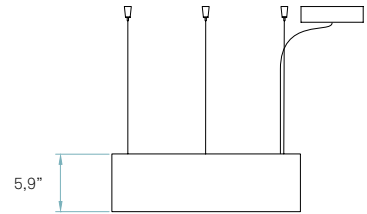
Steel cable
3 x 8 ft drop



Box size
24 x 24 x 13"

Box volume
4,5 ft³

Weight
Gross - 17,9 Lb
Net - 9,0 Lb



Linear Module
4 x 5,5 W 350mA
2700 K / 4000 K

(Be sure to specify the LED color temperature)



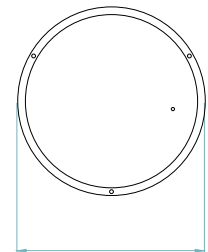
Driver



EFORE
1 unit - Ref. RCL030-0700B

Driver housed in canopy.

Compatible with TRIAC / ELV (only 120V) and 0-10V (120-277V)



Details

Input Voltage	Watt.	CCT	Luminous Flux	CRI	Lifetime (L70)
120 - 277V	25 W	2700 K 4000 K	N/A	90	40000h