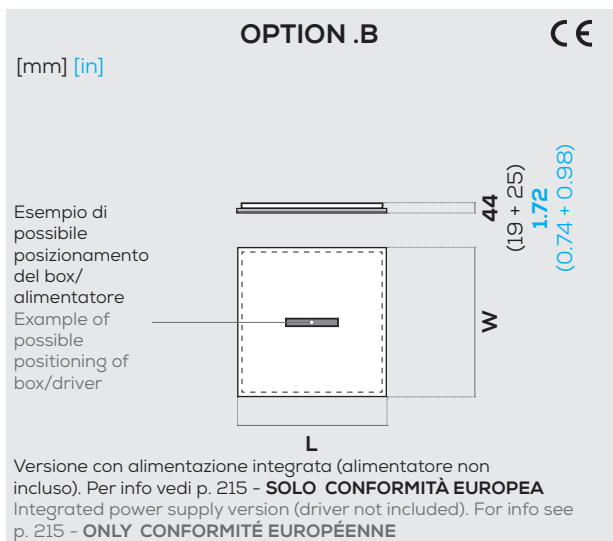
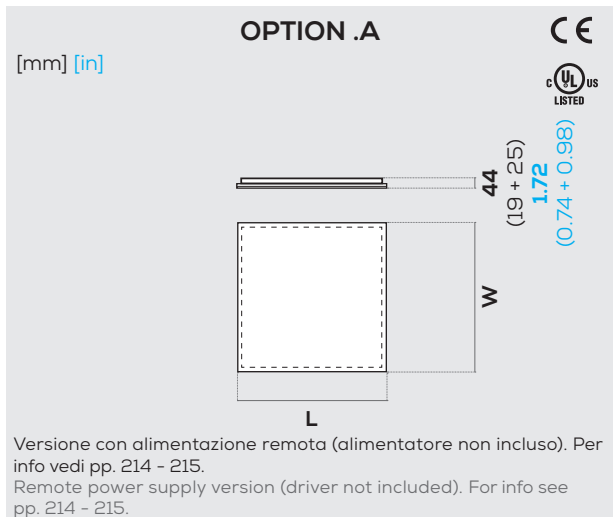


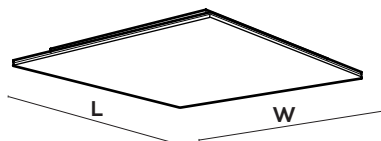


# .ROOF CEILING



## Installazione Installation

A soffitto  
Ceiling



## GENERAL INFO



IP65 e UL DAMP LOCATION su richiesta  
On request IP65 and UL DAMP LOCATION

### Roof a soffitto

Alluminio - Metacrilato

2700K/ 3000K/ 3500K/ 4000K/ 5700K/ TW - CRI > 90

Temperature colore 2000K, 2200K, 2500K, 5000K, 6500K, RGB, RGBW e RGBTW su richiesta  
*Nichia Optisolis™* (CRI 100) e *Nichia Vitasolis™* su richiesta

### Roof ceiling

Aluminum - Methacrylate

2700K/ 3000K/ 3500K/ 4000K/ 5700K/ TW - CRI > 90

On request color temperature 2000K, 2200K, 2500K, 5000K, 6500K, RGB, RGBW and RGBTW  
On request *Nichia Optisolis™* (CRI 100) and *Nichia Vitasolis™*

### Finiture alluminio

Aluminum finishings

Standard Standard	Speciali Special
○ bianco white	● ●
● nero black	○ ● (esempi) (examples)
	● ●

Colori e finiture speciali alluminio su richiesta (vedi p. 174)  
On request special aluminium colors and finishings (see p. 174)

### Finiture opale Opal finishings

Standard Standard	Speciali Special
○ lucido gloss	opal milling
○ opaco matte	opal sculpture

Finiture speciali opale su richiesta (vedi p. 177)  
On request special opal finishings (see p. 177)

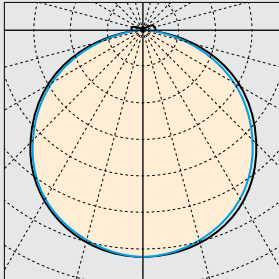
### Dimensioni Size

		[mm] [in]	
		W	L
1000 mm	39.37 in	x	1000 mm 39.37 in
1000 mm	39.37 in	x	2000 mm 78.74 in
1000 mm	39.37 in	x	3000 mm 118.11 in

Altre dimensioni su richiesta  
Custom sizes available

# .ROOF CEILING

Polar diagram [cd/klm]



C180 — C270 — C0 — C90

## UGR

X = 4 H, Y = 8 H

S = 0.25 H

Indici di riflessione  
Reflectance indexes

70/ 50/ 20

## .ROOF CEILING

UGR trasversale  
UGR crosswise

UGR longitudinale  
UGR endwise

Size	UGR crosswise	UGR endwise
1000 x 1000 mm 39.37 x 39.37 in	< 19	< 19
1000 x 2000 mm 39.37 x 78.74 in	< 19	< 19
1000 x 3000 mm 39.37 x 118.11 in	< 19	< 19

## Posizione LED LED position

### L2

due lati LED  
two LED sides



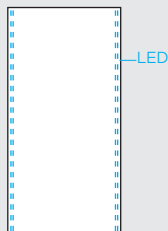
### L4

quattro lati LED  
four LED sides



### L2D

due lati LED doppi  
two double LED sides



Nichia Optisolis™ e Nichia Vitasolis™ su richiesta  
On request Nichia Optisolis™ and Nichia Vitasolis™

## LIGHT INFO

LED Lifespan: L90 > 60.000 ore a 50° Celsius  
Blue Light risk group (200 mm): EXEMPT UNLIMITED  
Garanzia: 2 anni (disponibile estensione fino a 5 anni su richiesta)  
Input LED: 24 V DC  
Driver - Trasformatore: AC/DC 24 V

LED Lifespan: L90 > 60.000 hours at 50° Celsius  
Blue Light risk group (200 mm): EXEMPT UNLIMITED  
Warranty: 2 years (on request extension up to 5 years available)  
Input LED: 24 V DC  
Driver - Transformer: AC/DC 24 V

## Temperatura colore Color temperature

- 2700 K
- 4000 K
- 3000 K
- 5700 K
- 3500 K
- Tunable White

CCT 2000K, 2200K, 2500K, 5000K, 6500K, RGB, RGBW e  
RGBTW su richiesta  
On request CCT 2000K, 2200K, 2500K, 5000K, 6500K, RGB,  
RGBW and RGBTW

## Flusso luminoso output e potenza Luminous flux output and power

Size	L2	L4	L2D
1000 x 1000 mm 39.37 x 39.37 in	3250 lm	6000 lm	100 W
1000 x 2000 mm 39.37 x 78.74 in	6500 lm	10000 lm	200 W
1000 x 3000 mm 39.37 x 118.11 in	9750 lm	15000 lm	300 W

## Info LED LED info

CRI  $R_a = 100$  (Nichia Optisolis™) su richiesta  
On request CRI  $R_a = 100$  (Nichia Optisolis™)

CRI  $R_a$  min 90  
 $R_g$  min 50

LED Nichia

Dimmerabile Si (vedi pp. 214 - 215)  
Dimmable Yes (see pp. 214 - 215)

# .ROOF CEILING

Codice prodotto  
Product code

prodotto product		dimensioni sizes		flusso luminoso luminous flux		CCT	finiture alluminio aluminium finishings		finitura opale opal finishings		fissaggio fastening		
<b>R.A</b>	<b>.ROOF</b> alimentazione remota remote power supply	<b>10</b>	1000 x 1000	<b>L2</b>	2 lati LED 2 LED sides	<b>27</b>	2700 K	<b>W</b>	bianco white	<b>G</b>	lucido gloss	<b>C</b>	a soffitto ceiling
		<b>10</b>	39.37 x 39.37										
<b>R.B</b>	<b>.ROOF</b> alimentazione integrata integrated power supply	<b>10</b>	1000 x 2000	<b>L4</b>	4 lati LED 4 LED sides	<b>30</b>	3000 K	<b>B</b>	nero black	<b>M</b>	opaco matte		
		<b>20</b>	39.37 x 78.74										
		<b>10</b>	1000 x 3000	<b>L2</b>	2 lati LED 2 double LED sides	<b>35</b>	3500 K	<b>S</b>	speciale <sup>1</sup> special <sup>1</sup>	<b>OM</b>	opal milling <sup>1</sup>		
		<b>30</b>	39.37 x 118.11										
				<b>40</b>	4000 K			<b>OS</b>	opal sculpture <sup>1</sup>				
						<b>57</b>	5700 K						
								<b>TW</b>	Tunable White				
								<b>RQ</b>	su richiesta on request				

<sup>1</sup>Finiture speciali su richiesta (vedi pp. 174 - 177)

<sup>1</sup>On request special finishings (see pp. 174 - 177)

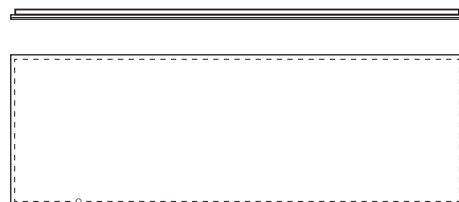
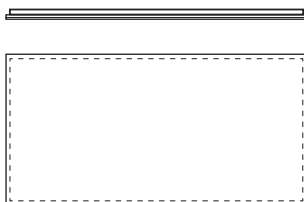
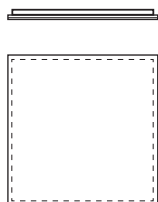
Dimensioni disponibili  
Available sizes

[mm] [in]

1000 x 1000 39.37 x 39.37

1000 x 2000 39.37 x 78.74

1000 x 3000 39.37 x 118.11



sistema di fissaggio  
fixing system

# DETTAGLI E FINITURE DETAILS AND FINISHINGS

## Finiture standard alluminio Standard aluminium finishings

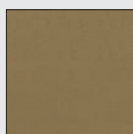


Bianco  
White

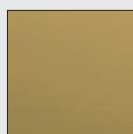


Nero  
Black

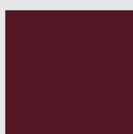
## Finiture speciali alluminio - verniciatura (esempi) Special aluminium finishings - liquid painting (e.g.)



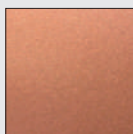
Bronzo  
Bronze



Ottone  
Brass



RAL 3005



Rame  
Copper



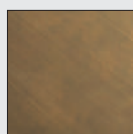
RAL 7035



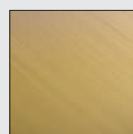
RAL 7033

Finitura RAL personalizzata disponibile su richiesta  
On request custom RAL finishing available

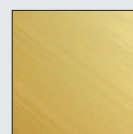
## Finiture speciali alluminio - ossidazione (esempi) Special aluminium finishings - oxidation (e.g.)



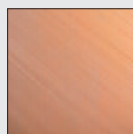
Bronzo  
Bronze



Ottone  
Brass



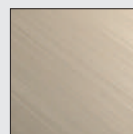
Oro  
Gold



Rame  
Copper



Cromato  
Chrome



Champagne  
Champagne

## Dettagli sospensione Suspension details



①  
Terminale Roof  
Frame suspension  
cable terminal

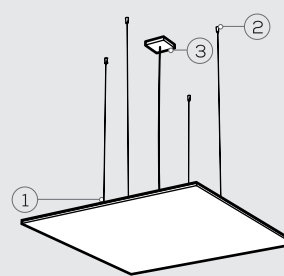


②  
Rosone  
Ceiling rose

## Installazione cover Coverplate installation



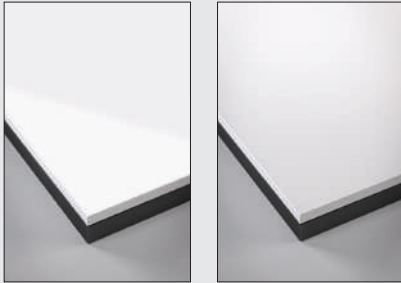
③  
Cover\*  
Coverplate\*



\*Disponibile nelle finiture standard alluminio  
\*Available in standard aluminium finishings

## FINITURE OPALE OPAL FINISHINGS

Finiture standard opale  
Standard opal finishings

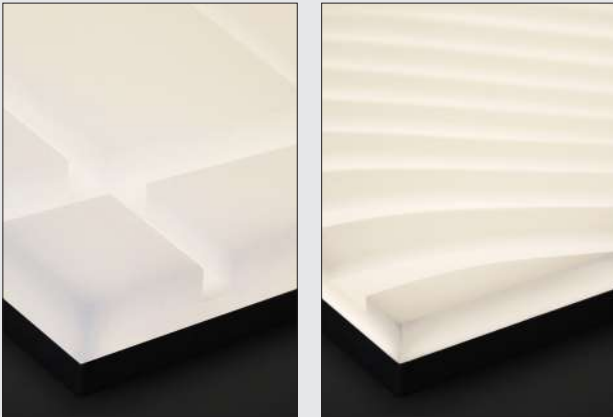


Lucido  
Gloss

Opaco  
Matte

## OPAL MILLING

Finiture speciali opale - fresatura  
Special opal finishings - milling



Su richiesta grafica personalizzabile  
On request customizable graphic

La tridimensionalità, resa dalla fresatura del diffusore opale, crea dinamicità sulla superficie e permette alla luce di muoversi tra effetti di chiaro-scuro. L'alta qualità della sorgente luminosa è garantita dalla tecnologia FOLIO® che, unita alla fresatura, consente di lavorare con precisione anche le trame più complesse.

The three-dimensionality, made by milling the opal diffuser, creates dynamism on the surface, allowing brightness to move between light and shade effects. The high quality of the light source is guaranteed by the FOLIO® technology which, together with the milling, allows to create with precision even the most complex textures.

## OPAL SCULPTURE

Finiture speciali opale - incisione laser  
Special opal finishings - laser engraving



Su richiesta grafica personalizzabile  
On request customizable graphic

L'incisione della superficie opale attraverso lavorazioni laser di ultima generazione, impreziosisce la sorgente luminosa creando delicati bassorilievi che le conferiscono carattere ed individualità. L'elevata precisione del processo di rimozione del materiale tramite incisione laser garantisce l'eccellente resa dei prodotti FOLIO®.

The opal surface engraving, through latest laser technologies, make the luminous fount more precious making delicate low reliefs that give character and individuality to the panels. The high precision of the material removal process by laser engraving guarantees the excellent yield of the FOLIO® products.