



.LINE CEILING

OPTION .A

[mm] [in]

W 44
(24 + 20)
1.73
(0.94 + 0.79)

L

CE

UL LISTED

Versione con alimentazione remota (alimentatore non incluso). Per info vedi pp. 214 - 215.
Remote power supply version (driver not included). For info see pp. 214 - 215.

OPTION .B

[mm] [in]

W 49
(24 + 25)
1.92
(0.94 + 0.98)

L

CE

Posizionamento del box/alimentatore
Positioning of box/driver

Versione con alimentazione integrata (alimentatore non incluso). Per info vedi p. 215 - **SOLO CONFORMITÀ EUROPEA**
Integrated power supply version (driver not included). For info see p. 215 - **ONLY CONFORMITÉ EUROPÉENNE**

Installazione Installation

A soffitto
Ceiling



GENERAL INFO



IP65 e UL DAMP LOCATION su richiesta
On request IP65 and UL DAMP LOCATION

Line a soffitto

Alluminio - Metacrilato
2700K/ 3000K/ 3500K/ 4000K/ 5700K/ TW - CRI > 90
Temperature colore 2000K, 2200K, 2500K, 5000K, 6500K, RGB, RGBW e RGBTW su richiesta
Nichia Optisolis™ (CRI 100) e *Nichia Vitasolis™* su richiesta

Line ceiling

Aluminum - Methacrylate
2700K/ 3000K/ 3500K/ 4000K/ 5700K/ TW - CRI > 90
On request color temperature 2000K, 2200K, 2500K, 5000K, 6500K, RGB, RGBW and RGBTW
On request *Nichia Optisolis™* (CRI 100) and *Nichia Vitasolis™*

Finiture alluminio

Aluminum finishings

Standard

Standard

Speciali

Special

○ bianco
white

● nero
black



(esempi)
(examples)



Colori e finiture speciali alluminio su richiesta (vedi p. 80)
On request special aluminium colors and finishings (see p. 80)

Finiture opale

Opal finishings

Standard

Standard

Speciali

Special

○ lucido
gloss

○ opaco
matte

opal milling

opal sculpture

Finiture speciali opale su richiesta (vedi p. 83)
On request special opal finishings (see p. 83)

Dimensioni

Size

[mm] [in]

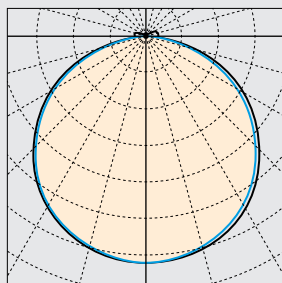
	W		L
300 mm	11.81 in	x	1200 mm 47.24 in
300 mm	11.81 in	x	1500 mm 59.05 in
300 mm	11.81 in	x	1800 mm 70.86 in
200 mm	7.87 in	x	2400 mm 94.48 in
200 mm	7.87 in	x	3000 mm 118.11 in

Altre dimensioni su richiesta
Custom sizes available



.LINE CEILING

Polar diagram [cd/klm]



C180 — C270 — C0 — C90

UGR

X = 4 H, Y = 8 H

S = 0.25 H

Indici di riflessione
Reflectance indexes

70/ 50/ 20

.LINE CEILING

UGR trasversale
UGR crosswise

UGR longitudinale
UGR endwise

300 x 1200 mm
11.81 x 47.24 in < 19 < 19

300 x 1500 mm
11.81 x 59.05 in < 19 < 19

300 x 1800 mm
11.81 x 70.86 in < 19 < 19

200 x 2400 mm
7.87 x 94.48 in < 19 < 19

200 x 3000 mm
7.87 x 118.11 in < 19 < 19

Posizione LED

LED position

L1

un lato LED
one LED side



L2

due lati LED
two LED sides



LED

Nichia Optisolis™ e Nichia Vitasolis™ su richiesta
On request Nichia Optisolis™ and Nichia Vitasolis™

LIGHT INFO

LED Lifespan: L90 > 60.000 ore a 50° Celsius
Blue Light risk group (200 mm): EXEMPT UNLIMITED
Garanzia: 2 anni (disponibile estensione fino a 5 anni su richiesta)
Input LED: 24 V DC
Driver - Trasformatore: AC/DC 24 V

LED Lifespan: L90 > 60.000 hours at 50° Celsius
Blue Light risk group (200 mm): EXEMPT UNLIMITED
Warranty: 2 years (on request extension up to 5 years available)
Input LED: 24 V DC
Driver - Transformer: AC/DC 24 V

Temperatura colore Color temperature

- 2700 K
- 4000 K
- 3000 K
- 5700 K
- 3500 K
- Tunable White

CCT 2000K, 2200K, 2500K, 5000K, 6500K, GB, RGBW e RGBTW su richiesta
On request CCT 2000K, 2200K, 2500K, 5000K, 6500K, RGB, RGBW and RGBTW

Flusso luminoso output e potenza Luminous flux output and power

Dimensione	L1	L2	Potenza
300 x 1200 mm 11.81 x 47.24 in	1351 lm	2574 lm	30 W / 60 W
300 x 1500 mm 11.81 x 59.05 in	1530 lm	2915 lm	38 W / 76 W
300 x 1800 mm 11.81 x 70.86 in	1675 lm	3190 lm	45 W / 90 W
200 x 2400 mm 7.87 x 94.48 in	2021 lm	3850 lm	60 W / 120 W
200 x 3000 mm 7.87 x 118.11 in	2310 lm	4400 lm	75 W / 150 W

Info LED LED info

CRI R_a = 100 (Nichia Optisolis™) su richiesta
On request CRI R_a = 100 (Nichia Optisolis™)

CRI R_a min 90
R_s min 50

LED Nichia

Dimmerabile Si (vedi pp. 214 - 215)
Dimmable Yes (see pp. 214 - 215)

illuminations

425 Peachtree Hills Ave. NE #3 Atlanta, GA 30305
404.876.1064 sales@illumco.com




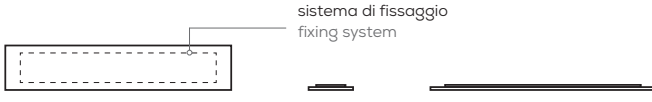



.LINE CEILING

Codice prodotto
Product code

prodotto product		dimensioni sizes		flusso luminoso luminous flux		CCT	finiture alluminio aluminium finishings		finitura opale opal finishings		fissaggio fastening						
L.A	.LINE alimentazione remota remote power supply	03	300 x 1200	L1	1 lato LED 1 LED side	27	2700 K	W	bianco white	G	lucido gloss	C	a soffitto ceiling				
		12	11.81 x 47.24														
L.B	.LINE alimentazione integrata integrated power supply	03	300 x 1500	L2	2 lati LED 2 LED sides	30	3000 K	B	nero black	M	opaco matte						
		15	11.81 x 59.05														
		03	300 x 1800			35	3500 K							S	speciale ¹ special ¹	OM	opal milling ¹
		18	11.81 x 70.86														
		02	200 x 2400			40	4000 K			OS	opal sculpture ¹						
		24	7.87 x 94.48														
		02	200 x 3000			57	5700 K										
		30	7.87 x 118.11														
							TW	Tunable White									
							RQ	su richiesta on request									

¹Finiture speciali su richiesta (vedi pp. 80 - 83)
¹On request special finishings (see pp. 80 - 83)

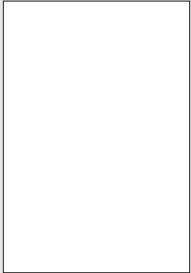
Dimensioni disponibili
Available sizes

Dimensioni disponibili Available sizes		[mm] [in]	
300 x 1200 11.81 x 47.24			
300 x 1500 11.81 x 59.05		sistema di fissaggio fixing system	
300 x 1800 11.81 x 70.86			
200 x 2400 7.87 x 94.48			
200 x 3000 7.87 x 118.11			



DETTAGLI E FINITURE DETAILS AND FINISHINGS

Finiture standard alluminio Standard aluminium finishings



Bianco
White

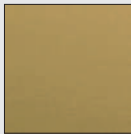


Nero
Black

Finiture speciali alluminio - verniciatura (esempi) Special aluminium finishings - liquid painting (e.g.)



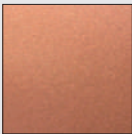
Bronzo
Bronze



Ottone
Brass



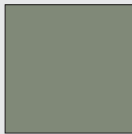
RAL 3005



Rame
Copper



RAL 7035



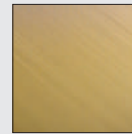
RAL 7033

Finitura RAL personalizzata disponibile su richiesta
On request custom RAL finishing available

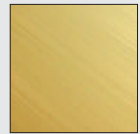
Finiture speciali alluminio - ossidazione (esempi) Special aluminium finishings - oxidation (e.g.)



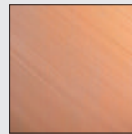
Bronzo
Bronze



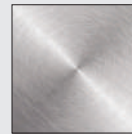
Ottone
Brass



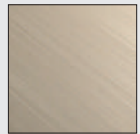
Oro
Gold



Rame
Copper



Cromato
Chrome



Champagne
Champagne

Dettagli sospensione Suspension details



Terminale Line
Line suspension
cable terminal



Nodo
Joint

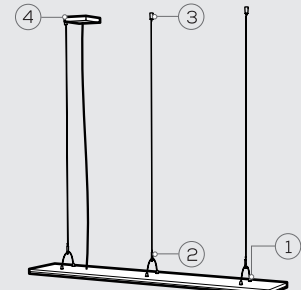


Rosone
Ceiling rose

Installazione cover Coverplate installation



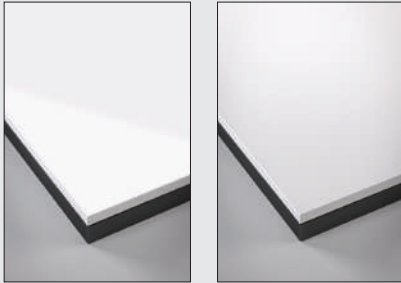
Cover*
Coverplate*



*Disponibile nelle finiture standard alluminio
*Available in standard aluminium finishings

FINITURE OPALE OPAL FINISHINGS

Finiture standard opale
Standard opal finishings

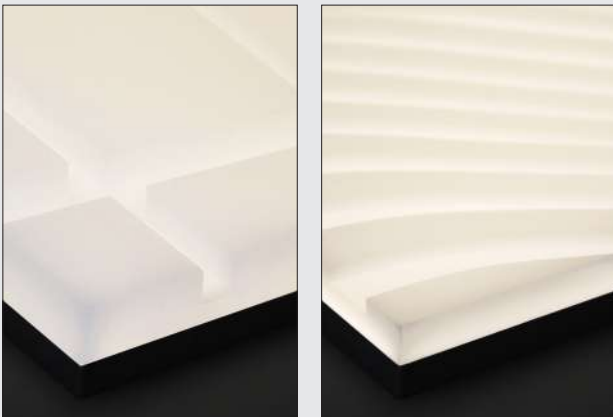


Lucido
Gloss

Opaco
Matte

OPAL MILLING

Finiture speciali opale - fresatura
Special opal finishings - milling



Su richiesta grafica personalizzabile
On request customizable graphic

La tridimensionalità, resa dalla fresatura del diffusore opale, crea dinamicità sulla superficie e permette alla luce di muoversi tra effetti di chiaro-scuro. L'alta qualità della sorgente luminosa è garantita dalla tecnologia FOLIO® che, unita alla fresatura, consente di lavorare con precisione anche le trame più complesse.

The three-dimensionality, made by milling the opal diffuser, creates dynamism on the surface, allowing brightness to move between light and shade effects. The high quality of the light source is guaranteed by the FOLIO® technology which, together with the milling, allows to create with precision even the most complex textures.

OPAL SCULPTURE

Finiture speciali opale - incisione laser
Special opal finishings - laser engraving



Su richiesta grafica personalizzabile
On request customizable graphic

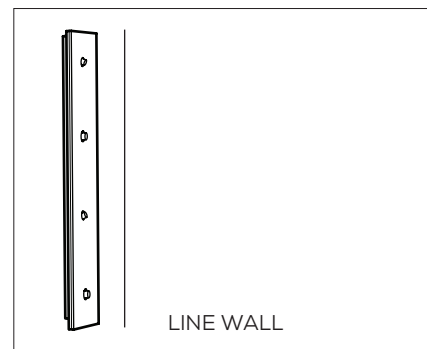
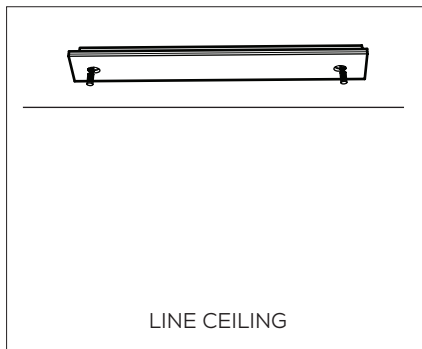
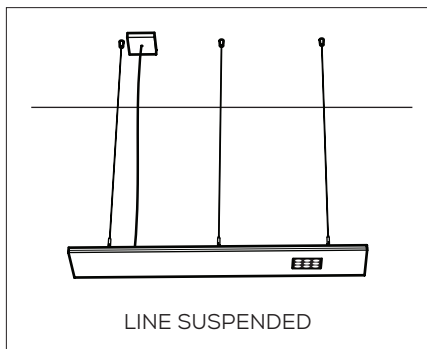
L'incisione della superficie opale attraverso lavorazioni laser di ultima generazione, impreziosisce la sorgente luminosa creando delicati bassorilievi che le conferiscono carattere ed individualità. L'elevata precisione del processo di rimozione del materiale tramite incisione laser garantisce l'eccellente resa dei prodotti FOLIO®.

The opal surface engraving, through latest laser technologies, make the luminous fount more precious making delicate low reliefs that give character and individuality to the panels. The high precision of the material removal process by laser engraving guarantees the excellent yield of the FOLIO® products.

.FOLIO® SPOT.MATE®

INTEGRABLE ON REQUEST WITHIN THE FOLLOWING FOLIO® COLLECTION

.LINE



LED

Sizes



DOMINO QUAD

NICHIA

88 x 88 mm

3.46 x 3.14 in



DOMINO LINEAR

NICHIA

172 x 32 mm

6.77 x 1.25 in



PICO 26.t

NICHIA

Ø 26 mm

Ø 1.02 in



PICO 26.a

NICHIA

Ø 26 mm

Ø 1.02 in



MICRO 40.t

NICHIA

Ø 40 mm

Ø 1.57 in



MICRO 40.t

OLE SORAA

Ø 40 mm

Ø 1.57 in



MICRO 40.a

NICHIA

Ø 40 mm

Ø 1.57 in



MICRO 40.a

OLE SORAA

Ø 40 mm

Ø 1.57 in



MINI 62.a

NICHIA

Ø 62 mm

Ø 2.44 in



MINI 62.a

OLE SORAA

Ø 62 mm

Ø 2.44 in



MIDI 77.a

NICHIA

Ø 77 mm

Ø 3.03 in



MIDI 77.a

ARCANE MODULE

Ø 77 mm

Ø 3.03 in

Contact FOLIO® for your net price multiplier.
 All prices include fixing system, standard CCT options & standard finishes.
Power supplies for Spot.Mate® are not included. Shipping is not included. 22

425 Peachtree Hills Ave. NE #3 Atlanta, GA 30305
 404.876.1064
 sales@illumco.com