



# .HEXA CEILING

## GENERAL INFO



IP65 e UL DAMP LOCATION su richiesta  
On request IP65 and UL DAMP LOCATION

**OPTION .A**

[mm] [in]

48 (23+25)  
1.88 (0.90+0.98)  
Ø

Versione con alimentazione remota (alimentatore non incluso). Per info vedi pp. 214 - 215.  
Remote power supply version (driver not included). For info see pp. 214 - 215.

**OPTION .B**

[mm] [in]

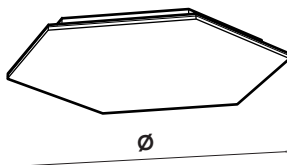
48 (23+25)  
1.88 (0.90+0.98)  
Ø

Esempio di possibile posizionamento del box/alimentatore  
Example of possible positioning of box/driver

Versione con alimentazione integrata (alimentatore non incluso). Per info vedi p. 215 - **SOLO CONFORMITÀ EUROPEA**  
Integrated power supply version (driver not included). For info see p. 215 - **ONLY CONFORMITÉ EUROPÉENNE**

## Installazione Installation

A soffitto  
Ceiling



Hexa a soffitto  
Alluminio - Metacrilato  
2700K/ 3000K/ 3500K/ 4000K/ 5700K/ TW - CRI > 90  
Temperature colore 2000K, 2200K, 2500K, 5000K, 6500K, RGB, RGBW e RGBTW su richiesta  
*Nichia Optisolis™* (CRI 100) e *Nichia Vitasolis™* su richiesta

Hexa ceiling  
Aluminum - Methacrylate  
2700K/ 3000K/ 3500K/ 4000K/ 5700K/ TW - CRI > 90  
On request color temperature 2000K, 2200K, 2500K, 5000K, 6500K, RGB, RGBW and RGBTW  
On request *Nichia Optisolis™* (CRI 100) and *Nichia Vitasolis™*

## Finiture alluminio Aluminum finishings

Standard Standard	Speciali Special
<ul style="list-style-type: none"> <li>○ bianco white</li> <li>● nero black</li> </ul>	<ul style="list-style-type: none"> <li>● ● (esempi) (examples)</li> <li>● ●</li> </ul>

Colori e finiture speciali alluminio su richiesta (vedi p. 192)  
On request special aluminium colors and finishings (see p. 192)

## Finiture opale Opal finishings

Standard Standard	Speciali Special
<ul style="list-style-type: none"> <li>○ lucido gloss</li> <li>○ opaco matte</li> </ul>	<ul style="list-style-type: none"> <li>opal milling</li> <li>opal sculpture</li> </ul>

Finiture speciali opale su richiesta (vedi p. 195)  
On request special opal finishings (see p. 195)

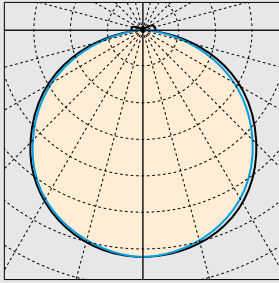
## Dimensioni Sizes

	Ø	[mm] [in]
600 mm	23.62 in	
800 mm	31.49 in	
1000 mm	39.37 in	

Altre dimensioni su richiesta  
Custom sizes available

# .HEXA CEILING

Polar diagram [cd/klm]



C180 — C270 — C0 — C90

## UGR

X = 4 H, Y = 8 H

S = 0.25 H

Indici di riflessione  
Reflectance indexes

70/ 50/ 20

## .HEXA CEILING

UGR trasversale  
UGR crosswise

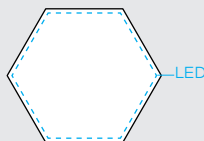
UGR longitudinale  
UGR endwise

Dimensione	UGR trasversale	UGR longitudinale
∅ 600 mm ∅ 23.62 in	< 19	< 19
∅ 800 mm ∅ 31.49 in	< 19	< 19
∅ 1000 mm ∅ 39.37 in	< 19	< 19

Posizione LED  
LED position

### P1

LED sul perimetro  
LED on the perimeter



Nichia Optisolis™ e Nichia Vitasolis™ su richiesta  
On request Nichia Optisolis™ and Nichia Vitasolis™

## LIGHT INFO

LED Lifespan: L90 > 60.000 ore a 50° Celsius  
Blue Light risk group (200 mm): EXEMPT UNLIMITED  
Garanzia: 2 anni (disponibile estensione fino a 5 anni su richiesta)  
Input LED: 24 V DC  
Driver - Trasformatore: AC/DC 24 V

LED Lifespan: L90 > 60.000 hours at 50° Celsius  
Blue Light risk group (200 mm): EXEMPT UNLIMITED  
Warranty: 2 years (on request extension up to 5 years available)  
Input LED: 24 V DC  
Driver - Transformer: AC/DC 24 V

## Temperatura colore Color temperature

- 2700 K
- 4000 K
- 3000 K
- 5700 K
- 3500 K
- Tunable White

CCT 2000K, 2200K, 2500K, 5000K, 6500K, RGB, RGBW e  
RGBTW su richiesta  
On request CCT 2000K, 2200K, 2500K, 5000K, 6500K, RGB,  
RGBW and RGBTW

## Flusso luminoso output e potenza Luminous flux output and power

Dimensione	Flusso luminoso	Potenza
∅ 600 mm ∅ 23.62 in	P1 2500 lm	45 W
∅ 800 mm ∅ 31.49 in	P1 3200 lm	60 W
∅ 1000 mm ∅ 39.37 in	P1 4125 lm	75 W

Info LED  
LED info

CRI R<sub>a</sub> = 100 (Nichia Optisolis™) su richiesta  
On request CRI R<sub>a</sub> = 100 (Nichia Optisolis™)

CRI R<sub>a</sub> min 90  
R<sub>s</sub> min 50

LED Nichia

Dimmerabile Si (vedi pp. 214 - 215)  
Dimmable Yes (see pp. 214 - 215)

# .HEXA CEILING

Codice prodotto  
Product code

								[mm] [in]
prodotto product	dimensioni sizes	flusso luminoso luminous flux	CCT	finiture alluminio aluminium finishings	finitura opale opal finishings	fissaggio fastening		
<b>H.A</b> .HEXA alimentazione remota remote power supply	<b>06</b> ø 600 ø 23.62	<b>P1</b> 1 perimetro LED 1 LED perimeter	<b>27</b> 2700 K	<b>W</b> bianco white	<b>G</b> lucido gloss	<b>C</b> a soffitto ceiling		
<b>H.B</b> .HEXA alimentazione integrata integrated power supply	<b>08</b> ø 800 ø 31.49		<b>30</b> 3000 K	<b>B</b> nero black	<b>M</b> opaco matte			
	<b>10</b> ø 1000 ø 39.37		<b>35</b> 3500 K	<b>S</b> speciale <sup>1</sup> special <sup>1</sup>	<b>OM</b> opal milling <sup>1</sup>			
			<b>40</b> 4000 K		<b>OS</b> opal sculpture <sup>1</sup>			
			<b>57</b> 5700 K					
			<b>TW</b> Tunable White					
			<b>RQ</b> su richiesta on request					

<sup>1</sup>Finiture speciali su richiesta (vedi pp. 192 - 195)  
<sup>1</sup>On request special finishings (see pp. 192 - 195)

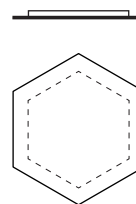
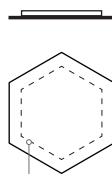
Dimensioni disponibili  
Available sizes

[mm] [in]

ø 600 ø 23.62

ø 800 ø 31.49

ø 1000 ø 39.37



sistema di fissaggio  
fixing system



# DETTAGLI E FINITURE DETAILS AND FINISHINGS

## Finiture standard alluminio Standard aluminium finishings

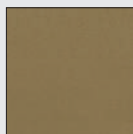


Bianco  
White

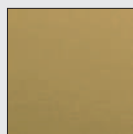


Nero  
Black

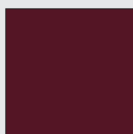
## Finiture speciali alluminio - verniciatura (esempi) Special aluminium finishings - liquid painting (e.g.)



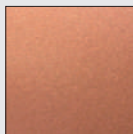
Bronzo  
Bronze



Ottone  
Brass



RAL 3005



Rame  
Copper



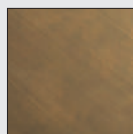
RAL 7035



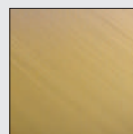
RAL 7033

Finitura RAL personalizzata disponibile su richiesta  
On request custom RAL finishing available

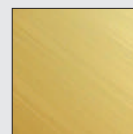
## Finiture speciali alluminio - ossidazione (esempi) Special aluminium finishings - oxidation (e.g.)



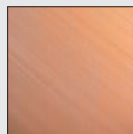
Bronzo  
Bronze



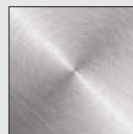
Ottone  
Brass



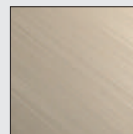
Oro  
Gold



Rame  
Copper



Cromato  
Chrome



Champagne  
Champagne

## Dettagli sospensione Suspension details



①  
Terminale Hexa  
Hexa suspension  
cable terminal

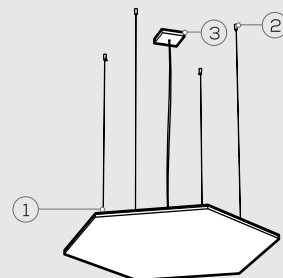


②  
Rosone  
Ceiling rose

## Installazione cover Coverplate installation



③  
Cover\*  
Coverplate\*

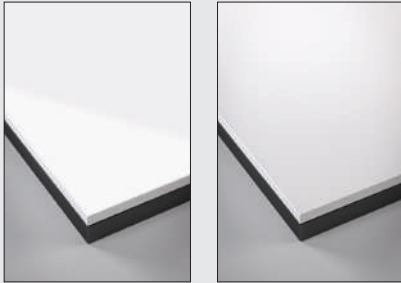


\*Disponibile nelle finiture standard alluminio  
\*Available in standard aluminium finishings



## FINITURE OPALE OPAL FINISHINGS

Finiture standard opale  
Standard opal finishings

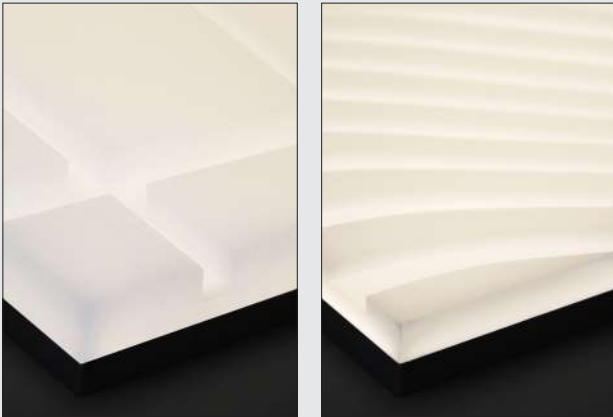


Lucido  
Gloss

Opaco  
Matte

## OPAL MILLING

Finiture speciali opale - fresatura  
Special opal finishings - milling



Su richiesta grafica personalizzabile  
On request customizable graphic

La tridimensionalità, resa dalla fresatura del diffusore opale, crea dinamicità sulla superficie e permette alla luce di muoversi tra effetti di chiaro-scuro. L'alta qualità della sorgente luminosa è garantita dalla tecnologia FOLIO® che, unita alla fresatura, consente di lavorare con precisione anche le trame più complesse.

The three-dimensionality, made by milling the opal diffuser, creates dynamism on the surface, allowing brightness to move between light and shade effects. The high quality of the light source is guaranteed by the FOLIO® technology which, together with the milling, allows to create with precision even the most complex textures.

## OPAL SCULPTURE

Finiture speciali opale - incisione laser  
Special opal finishings - laser engraving



Su richiesta grafica personalizzabile  
On request customizable graphic

L'incisione della superficie opale attraverso lavorazioni laser di ultima generazione, impreziosisce la sorgente luminosa creando delicati bassorilievi che le conferiscono carattere ed individualità. L'elevata precisione del processo di rimozione del materiale tramite incisione laser garantisce l'eccellente resa dei prodotti FOLIO®.

The opal surface engraving, through latest laser technologies, make the luminous fount more precious making delicate low reliefs that give character and individuality to the panels. The high precision of the material removal process by laser engraving guarantees the excellent yield of the FOLIO® products.