

NEW

BON JOUR VERSAILLES



TABLE

Technical info p. 283-284

BON JOUR VERSAILLES

VERSAILLES: EDGE LIGHTING 2700K 900lm CR190 13W ø base 175mm ø diff. 316mm h 423mm
VERSAILLES SMALL: EDGE LIGHTING 2700K 250lm CR190 2.5W ø base 115mm ø diff. 131,5mm h 272mm

Philippe Starck, 2017



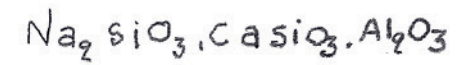
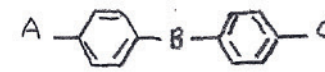
425 Peachtree Hills Ave. NE #3 Atlanta, GA 30305
404.876.1064 sales@illumco.com

Erede della lampada "Bon Jour", nata dalla collaborazione tra Flos e Starck, e del candeliere "Versailles" creato da Baccarat, la collezione Bon Jour Versailles - composta da due modelli, disponibili in cristallo o polimetilmetacrilato - rivela linee senza tempo, di ineffabile leggerezza ed empirica modernità, che evocano la memoria collettiva del passato, del presente e del futuro.

The heir to an earlier "Bon Jour" lamps collaboration between Flos and Starck and to the "Versailles" candle-holder created by Baccarat, the Bon Jour Versailles collection, with two models available in crystal or polymethylmethacrylate, reveals timeless lines with unfailing lightness and empirical modernity that evoke our collective memory of the past, of the present and the future.

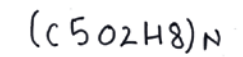
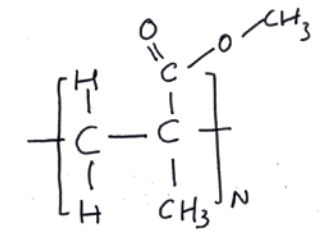


LE
CRISTAL
EST:



- L'INTELLIGENCE DE LA NATURE
- UN MYSTERE
- ISSU DU HAZARD ET DE LA NECESSITE
- INVENTE PAR LA NATURE IL Y A PLUS OU MOINS 100,000 ANS
- NE DANS LE FEU
- UN LIQUIDE
- TRANSPARENT
- TRES FRAGILE
- CHER
- MOULABLE PAR GRAVITE
- POLISSABLE
- ARISTOCRATIQUE
- SOUVENT IMPARFAIT
- INALTERABLE
- EMPIRIQUE
- RARE
- NOBLE
- MAGIQUE

LE
POLYMETACRYLATE DE METHYLE
EST:



- L'INTELLIGENCE DE L'HOMME
- UNE INVENTION
- ISSU DE LA RECHERCHE CHIMIQUE
- DECOUVERT PAR FITTIG ET PAUL EN 1877
- NE DANS LA CHALEUR
- UN POLYMERE
- TRANSPARENT
- TRES SOLIDE
- ABORDABLE
- INJECTABLE
- POUSSABLE
- DEMOCRATIQUE
- TOUJOURS PARFAIT
- INDESTRUCTIBLE
- THEORIQUE
- INFINI
- NOBLE
- MAGIQUE

PH.S

②

Baccarat

FLOS

illuminations
425 Peachtree Hills Ave. NE #3 Atlanta, GA 30305
404.876.1064 sales@illumco.com



BON JOUR VERSAILLES SMALL ACCESORIOS · ACCESSORIES

Descripción · Description
Corona en PMMA transparente moldeado por inyección, o también en tela o rafia entrelazada a mano, para versiones personalizadas · *Crown in transparent injection-printed PMMA or in hand-woven fabric or raffia, for customised versions.*

Acabados Finishes

amarillo · *yellow*
ámbar · *amber*
rafia · *raffan*
tela · *fabric*
transparente · *transparent*
fumè · *fumée*
rojo · *red*

Colores Colors

F1036019
F1036070
F1036088
F1036007
F1036000
F1036030
F1036035



BON JOUR VERSAILLES

Philippe Starck, 2017
Potencia · *Power* 13W
Tensión · *Voltage* 100-240V/24V

LED INCLUDED
NOT REPLACEABLE
Fuentes luminosas (disponibles) ·
Light source (available)
EDGE LIGHTING 13W 811lm 2700K
CRI90 [i] DIMMABLE

Materiales · *Materials*
polimetilmetacrilato · *polymethylmethacrylate*

Peso · *Weight* 1,54 Kg DIMMER INCLUDED

Acabados Finishes

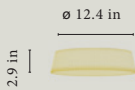
Cromo · *chrome*
Cobre · *copper*

Colores Colors

F1041057
F1041015



p. 64



BON JOUR VERSAILLES ACCESORIOS · ACCESSORIES

Descripción · Description
Corona en PMMA transparente moldeado por inyección, o también en tela o rafia entrelazada a mano, para versiones personalizadas · *Crown in transparent injection-printed PMMA or in hand-woven fabric or raffia, for customised versions.*

Acabados Finishes

amarillo · *yellow*
ámbar · *amber*
rafia · *rattan*
tela · *fabric*
transparente · *transparent*
fumè · *fumée*

Colores Colors

F1033019
F1033070
F1033088
F1033007
F1033000
F1033030



BON JOUR VERSAILLES SMALL

Philippe Starck, 2017
Potencia · *Power* 3,5W
Tensión · *Voltage* 100-240V/24V

LED INCLUDED
NOT REPLACEABLE
Fuentes luminosas (disponibles) ·
Light source (available)
EDGE LIGHTING 2,5W 136lm 2700K
CRI 90 [i] DIMMABLE

Materiales · *Materials*
polimetilmetacrilato · *polymethylmethacrylate*

Peso · *Weight* 0,28 Kg DIMMER INCLUDED

Acabados Finishes

Cromo · *chrome*
Cobre · *copper*

Colores Colors

F1042057
F1042015



p. 64

[e] fuente de luz excluida · *excluded light source*

[i] fuente de luz incluida · *included light source*