

Project: \_\_\_\_\_

Contact: \_\_\_\_\_

Fill in the shaded boxes using the information listed below

Order Code: **R-0056** -  -  -  -  -  -  -

Model      (A) EXTERIOR FINISH      (B) INTERIOR FINISH      (C) LIGHT ENGINE DISC      (D) LAMPING      (E) LIGHT OUTPUT      (F) OPTION CODE

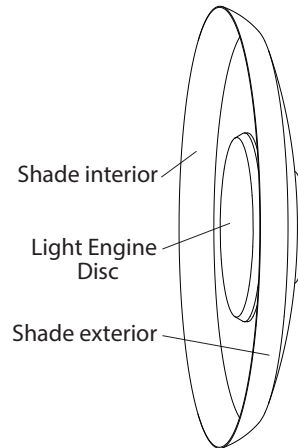
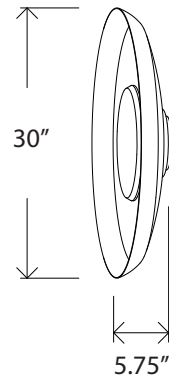
EXAMPLE ORDER CODE      R-0056      -      049      -      117      -      001      -      30      -      F      -      EM



Torrey sconce, Textured Black outside, Textured White inside, White Washed Oak light engine disc, 3000K.



Torrey sconce, Brushed Brass outside, Brushed Brass inside, Walnut light engine disc, 3000K.



**(A) EXTERIOR SHADE FINISH**

- 049** Textured Black
- 060** Textured White
- 119** Brushed Aluminum
- 120** Brushed Brass
- 117** Distressed Brass

**(B) INTERIOR SHADE FINISH**

- 060** Textured White
- 119** Brushed Aluminum \*
- 120** Brushed Brass \*
- 117** Distressed Brass \*

\*finish will reduce deliver lumens

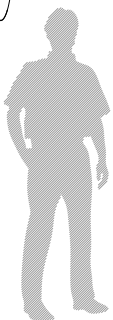
**(C) LIGHT ENGINE DISC**

- 001** Walnut
- 002** Dark Stained Walnut
- 095** White Washed Oak
- 049** Textured Black
- 060** Textured White
- 119** Brushed Aluminum
- 120** Brushed Brass
- 117** Distressed Brass

**(D) LAMPING CCT**

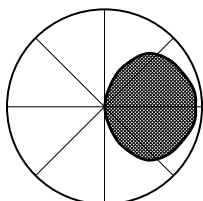
<b>27</b>	2700K LED
<b>30</b>	3000K LED
<b>35</b>	3500K LED
<b>40</b>	4000K LED

CRI 90+



6' Tall Person

**Photometric Polar Graph**



**(E) LIGHT OUTPUT**

<b>F</b>	Full Output - Wattage
<b>R</b>	50% Reduced Output - Wattage
<b>C</b>	Custom Reduction Percentage

Full output:  
2275 Lumens (delivered)  
37 Watts

Custom Reduction Percentage- to reduce both lumens and wattage.

Full output based on Textured White shade interior with 3000K.

**(F) OPTION CODE**

**EM** Emergency Backup option.

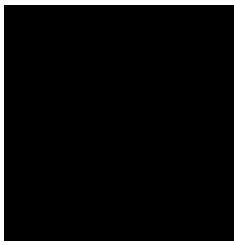
Fixture Specs

Dimensions: 30" Ø x 5.75"  
 Materials: Spun Aluminum Shade, Solid Wood or Spun Metal Accent, Protective Powder Coated Finishes  
 Product weight: 13 lb  
 Light source: Integrated LED  
 Light output: 2275 Lumens (Textured White shade interior)  
 Color accuracy: 90+ CRI

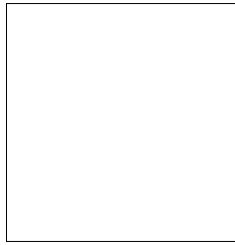
Driver Specs

120-277VAC Input  
 0-10V dimming down to 1% with dim to off  
 LED driver integrated into fixture

A- EXTERIOR SHADE FINISH



049  
 Textured Black  
 Powder Coat  
 CM - 049



060  
 Textured White  
 Powder Coat  
 CM - 060



119  
 Brushed Aluminum  
 CM - 119

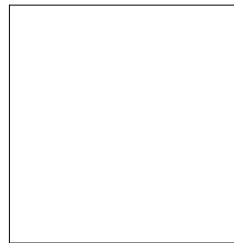


120  
 Brushed Brass  
 CM -120



117  
 Distressed Brass  
 CM - 117

B - INTERIOR SHADE FINISH



060  
 Textured White  
 Powder Coat  
 CM - 060



119  
 Brushed Aluminum  
 CM - 119



120  
 Brushed Brass  
 CM -120

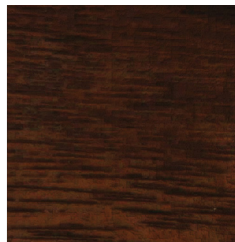


117  
 Distressed Brass  
 CM - 117

C - LIGHT ENGINE DISC FINISH



001  
 Walnut  
 CM -001



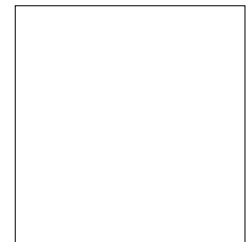
002  
 Dark Stained Walnut  
 CM - 002



095  
 White Washed Oak  
 CM - 095



049  
 Textured Black  
 Powder Coat  
 CM - 049



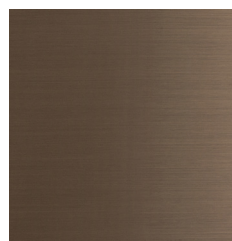
060  
 Textured White  
 Powder Coat  
 CM - 060



119  
 Brushed Aluminum  
 CM - 119



120  
 Brushed Brass  
 CM -120



117  
 Distressed Brass  
 CM - 117