



UP STOR 60
Design by Manuel Vivian

Collection consisting of ceiling or wall lamps with metal frame and removable, washable elastic fabric covering. Available in several colours and sizes. Screw fitting light source.

Typology: CEILING - WALL LAMP

Ratings

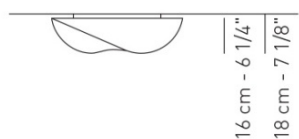
- E26
- Diffused light
- Surface installation over holes
- Power supply 120V AC
- Switch mode: on-off
- Steel frame, painted

Product code composition

STORMY / fabric INCLUDED - application: both as ceiling or wall lamp

Type	Article	Colours	Finish	Source
UP	STOR 60	BC white	XX white metal	E26 2 x Max 17W LED or 2 x Max 26W fluo
		AV ivory		

lb 5.51 ft³ 2.472



60 cm - 23 5/8"



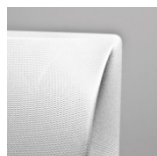
DRY LOCATION

example composition code | **UP** | **STOR60** | **AV** | **XX** | **E26**

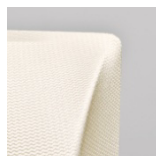
for additional fabrics please refer to our pricelist or contact our representatives

Removable and washable elastic fabric
Composition 85% polyamide, 15% elastane
Weight 255/285 gr/m² - test method ISO 3801
Glow wire 750°C

Available lampshade colors



BC
White



AV
Ivory pattern

UPSTOR60__XXE26

CUSTOMER _____

NOTES _____

Luminous flux for all built-in LED luminaires is shown at source level.
Technical data could be subject to alteration without notice. Axo Light does not provide legal guarantee for the accuracy of this data sheet.





UP STO 100
Design by Manuel Vivian

Collection consisting of ceiling or wall lamps with metal frame and removable, washable elastic fabric covering. Available in several colours and sizes. Screw fitting light source.

Typology: CEILING - WALL LAMP

Ratings

- E26
- Diffused light
- Surface installation over holes
- Power supply 120V AC
- Switch mode: on-off
- Steel frame, painted

Product code composition

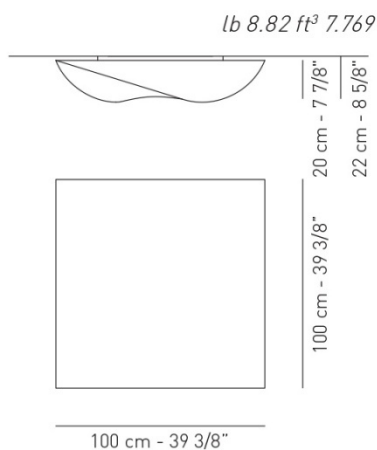
STORMY / fabric INCLUDED - application: both as ceiling or wall lamp

Type	Article	Colours	Finish	Source
UP	STO 100	BC white	XX white metal	E26 3 x Max 17W LED or 3 x Max 26W fluo
		AV ivory		



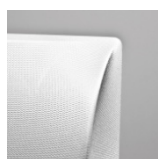
example composition code |UP |STO100 |BC |XX |E26

for additional fabrics please refer to our pricelist or contact our representatives

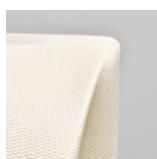


Removable and washable elastic fabric
Composition 85% polyamide, 15% elastane
Weight 255/285 gr/m² - test method ISO 3801
Glow wire 750°C

Available lampshade colors



BC
White



AV
Ivory pattern

UPSTO100__XXE26

CUSTOMER _____

NOTES _____

Luminous flux for all built-in LED luminaires is shown at source level.
Technical data could be subject to alteration without notice. Axo Light does not provide legal guarantee for the accuracy of this data sheet.

425 Peachtree Hills Ave. NE #3 Atlanta, GA 30305
404.876.1064 sales@illumco.com