

# PAD SYSTEM

## STAND ALONE



**DIFFUSION**  
Direct & indirect

**LAMPING**  
48W

**LAMP TYPE**  
LED

**LUMEN OUTPUT**  
3600 lm

**VOLTAGE**  
120-277V

**DIMMING FEATURES**  
Dimmable 0-10V

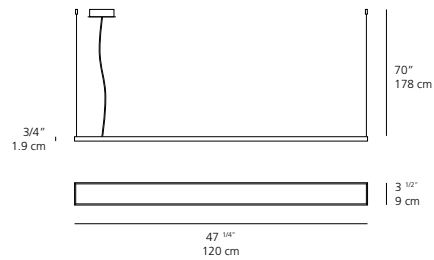
**LED COLOR**  
3500K

**FINISH**  
 white  
 clear anodized

**CRI**  
85

**CERTIFICATIONS**  
c.UL.us listed

### DIMENSIONS



## SYSTEM



**DIFFUSION**  
Direct & indirect

**LAMPING**  
36W

**LAMP TYPE**  
LED

**LUMEN OUTPUT**  
2900 lm

**VOLTAGE**  
120-277V

**DIMMING FEATURES**  
Dimmable 0-10V

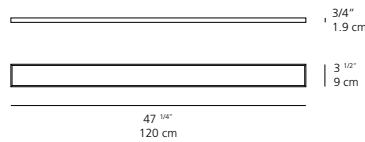
**LED COLOR**  
3500K

**FINISH**  
 white  
 clear anodized

**CRI**  
85

**CERTIFICATIONS**  
c.UL.us listed

### DIMENSIONS



## END CAPS AND JOINERS

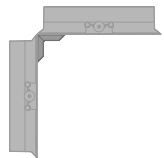
### END CAP



### LINEAR CONNECTOR



### ANGULAR CONNECTOR



For more detailed product specs, download the specsheet available on [www.artemide.net](http://www.artemide.net)