

LINEA CURVE wall | ceiling

LINEA CURVE MINI wall / ceiling



EMISSION
mono (1 side illuminated)
dual (2 side illuminated)

CRI
>80
>90

LIGHT SOURCE
LED
direct
6.1W
direct/indirect
12.2W
3000K or 3500K

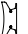

FINISH
 anthracite grey
 white

CERTIFICATIONS
c.UL.us listed, ADA

DIMMING FEATURE
phase dimming 2-wire
120V (also on/off 277V)
0-10V dimming
120V-277V

DIMENSIONS

2 3/16" 5.5 cm | 6 1/4" 15.8 cm

4 1/2" 11.4 cm |  

TECHNICAL DATA	80CRI 3500K			
	mini	12	24	36
Dual:				
Input Powder:	12.2W	19.6W	41.8W	58.8W
Lumen Output:	516 lm	874 lm	1835 lm	tt
Efficacy:	42.4lm/W	44.6lm/W	43.8lm/W	43.5lm/W

mono:				
Input Powder:	6.1W	9.8W	20.9W	29.4W
Lumen Output:	258 lm	437 lm	917 lm	1280 lm
Efficacy:	42.4lm/W	44.6lm/W	43.8lm/W	43.5lm/W

LINEA CURVE 12 wall / ceiling



EMISSION
mono (1 side illuminated)
dual (2 side illuminated)


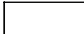
LIGHT SOURCE
LED
direct 9.8W
direct/indirect 19.6 lm/W
3000K or 3500K

DIMMING FEATURE
phase dimming 2-wire 120V (also on/off 277V)
0-10V dimming 120V-277V

CRI
>80
>90

DIMENSIONS

2 3/16" 5.5 cm | 12 3/16" 31 cm

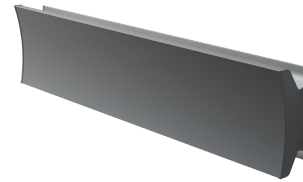
4 1/2" 11.4 cm |  

FINISH
 anthracite grey
 white

CERTIFICATIONS
c.UL.us listed, ADA

TECHNICAL DATA
Refer to table for technical data

LINEA CURVE 24 wall / ceiling



EMISSION
mono (1 side illuminated)
dual (2 side illuminated)


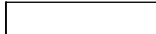
LIGHT SOURCE
LED
direct 20.9W
direct/indirect 41.8 lm/W
3000K or 3500K

DIMMING FEATURE
phase dimming 2-wire 120V (also on/off 277V)
0-10V dimming 120V-277V

CRI
>80
>90

DIMENSIONS

2 3/16" 5.5 cm | 24 1/8" 61.3 cm

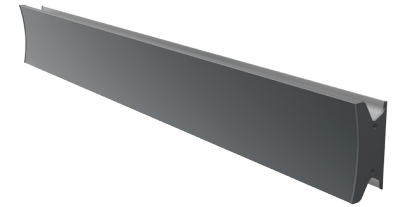
4 1/2" 11.4 cm |  

FINISH
 anthracite grey
 white

CERTIFICATIONS
c.UL.us listed, ADA

TECHNICAL DATA
Refer to table for technical data

LINEA CURVE 36 wall / ceiling



EMISSION
mono (1 side illuminated)
dual (2 side illuminated)



LIGHT SOURCE
LED
direct 29.4W
direct/indirect 58.8 lm/W
3000K or 3500K

DIMMING FEATURE
phase dimming 2-wire 120V (also on/off 277V)
0-10V dimming 120V-277V

CRI
>80
>90

DIMENSIONS

2 3/16" 5.5 cm | 36" 91.9 cm

4 1/2" 11.4 cm |  

FINISH
 anthracite grey
 white

CERTIFICATIONS
c.UL.us listed, ADA

TECHNICAL DATA
Refer to table for technical data

