

Code:	Project:	Type:
	Notes:	

ALPHABET OF LIGHT

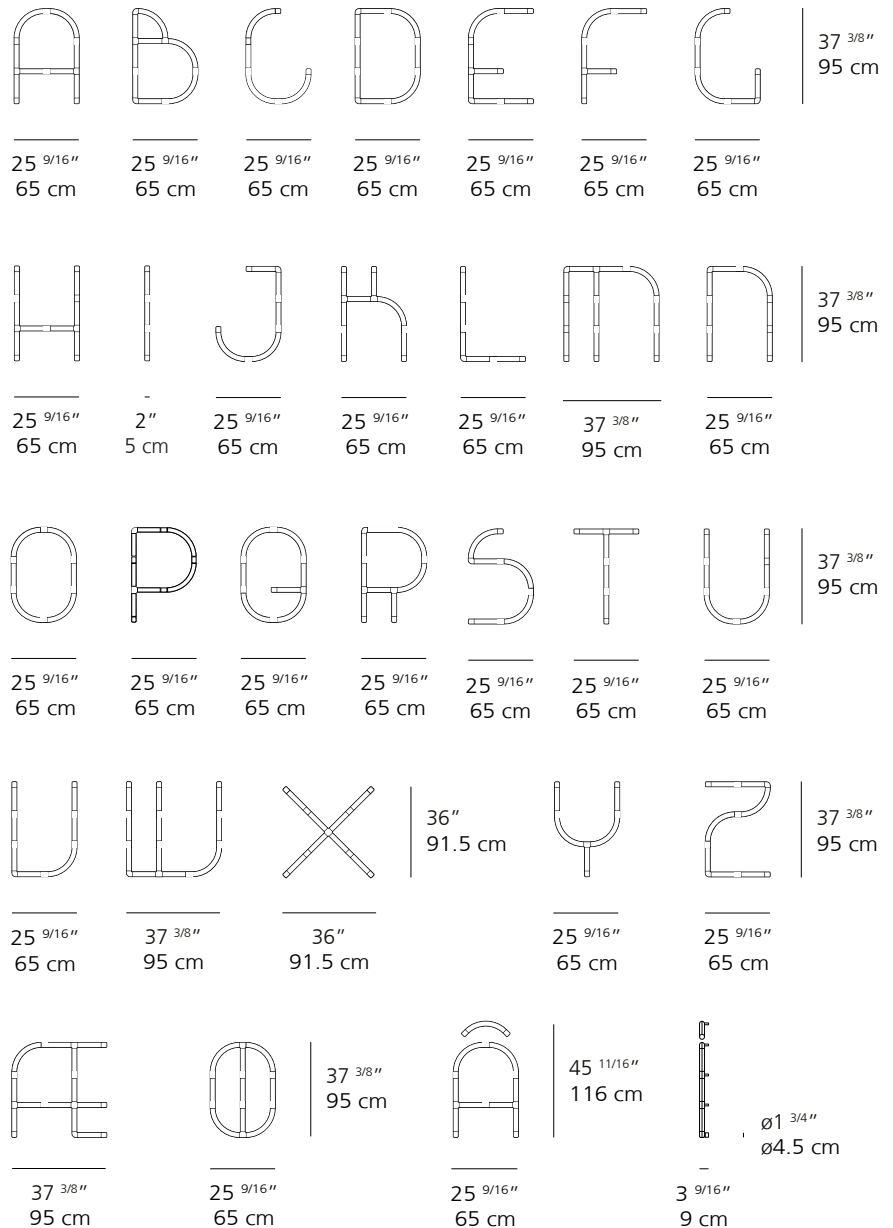
Big - Bjarke Ingels Group



UPPERCASE:

Letter	Code	Power consumption	Lumen Delivered	Efficacy (lm/W)
A	□ 1201A00A	30W	2011lm	67.0
B	□ 1201B00A	31W	2156lm	69.5
C	□ 1201C00A	20W	1296lm	64.8
D	□ 1201D00A	29W	2011lm	69.3
E	□ 1201E00A	26W	1651lm	63.5
F	□ 1201F00A	19W	1221lm	64.3
G	□ 1201G00A	21W	1366lm	65.0
H	□ 1201H00A	27W	1721lm	63.7
I	□ 1201I00A	11W	646lm	58.7
J	□ 1201J00A	21W	1366lm	65.0
K	□ 1201K00A	26W	1651lm	63.5
L	□ 1201L00A	17W	1076lm	63.3
M	□ 1201M00A	38W	2512lm	66.1
N	□ 1201N00A	25W	1651lm	66.0
O	□ 1201O00A	27W	1871lm	69.3
P	□ 1201P00A	27W	1796lm	66.5
Q	□ 1201Q00A	31W	2086lm	67.3
R	□ 1201R00A	30W	2011lm	67.0
S	□ 1201S00A	23W	1511lm	65.7
T	□ 1201T00A	17W	1076lm	63.3
U	□ 1201U00A	24W	1581lm	65.9
V	□ 1201V00A	25W	1651lm	66.0
W	□ 1201W00A	38W	2512lm	66.1
X	□ 1201X00A	27W	1721lm	63.7
Y	□ 1201Y00A	21W	1366lm	65.0
Z	□ 1201Z00A	27W	1796lm	66.5
Æ	□ 1201Æ00A	42W	2727lm	64.9
Ø	□ 1201Ø00A	36W	2517lm	69.9
Â	□ 1201Â00A	25W	1656lm	66.2

Efficiency : 69% / CCT : 3000k / CRI : 80 / Voltage : 24VDC



FEATURES:

Construction : Illuminated tubes in opaque injection molded PMMA. Support pins are made of brushed aluminum. 360° light emission. Positioning template included. Distance from wall 3 9/16" (9 cm). illuminated tube of ø 2" (5 cm)

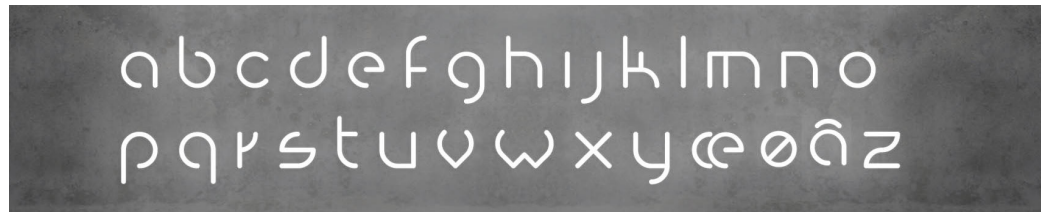
Label: US - suitable for dry locations. **ADA**
Class: IP20

Date: 19/10/17
Rev.01

We reserve the right to change specifications of our products (designs, materials and finishes).
For the latest product information, please contact: USA: 631-694-9292, Canada: 514-323-6537 or at www.illumco.com
2017 © Artemide | All rights reserved

Code:	Project:	Type:
	Notes:	

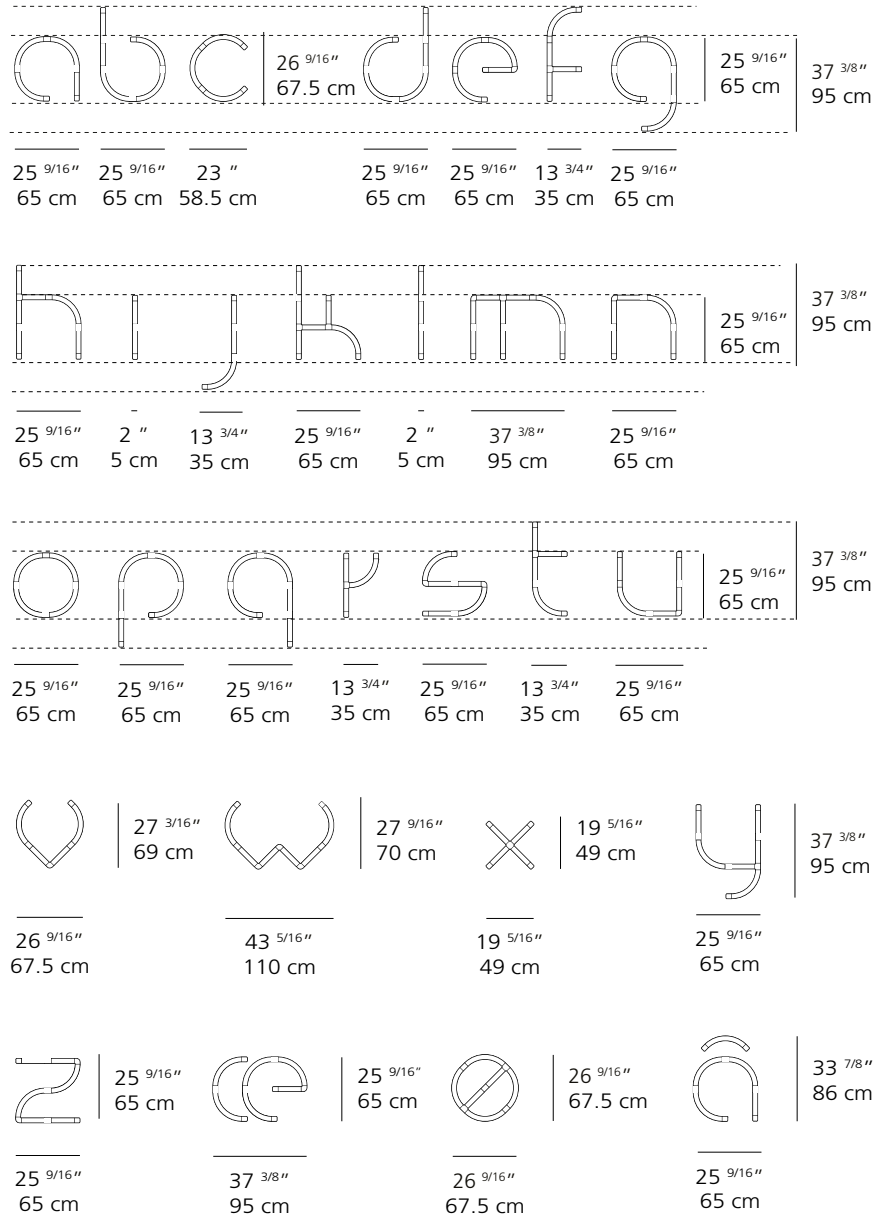
ALPHABET OF LIGHT
Big - Bjarke Ingels Group



LOWERCASE:

Letter	Code	Power consumption	Lumen Delivered	Efficacy (lm/W)
a	<input type="checkbox"/> 1202A00A	20W	1296lm	64.8
b	<input type="checkbox"/> 1202B00A	23W	1511lm	65.7
c	<input type="checkbox"/> 1202C00A	17W	1081lm	63.6
d	<input type="checkbox"/> 1202D00A	23W	1511lm	65.7
e	<input type="checkbox"/> 1202E00A	20W	1296lm	64.8
f	<input type="checkbox"/> 1202F00A	16W	1006lm	62.9
g	<input type="checkbox"/> 1202G00A	25W	1656lm	66.2
h	<input type="checkbox"/> 1202H00A	23W	1436lm	62.4
i	<input type="checkbox"/> 1202I00A	8W	430lm	53.7
j	<input type="checkbox"/> 1202J00A	13W	791lm	60.8
k	<input type="checkbox"/> 1202K00A	23W	1436lm	62.4
l	<input type="checkbox"/> 1202L00A	11W	646lm	58.7
m	<input type="checkbox"/> 1202M00A	29W	1866lm	64.3
n	<input type="checkbox"/> 1202N00A	19W	1221lm	64.3
o	<input type="checkbox"/> 1202O00A	21W	1441lm	68.6
p	<input type="checkbox"/> 1202P00A	23W	1511lm	65.7
q	<input type="checkbox"/> 1202Q00A	23W	1511lm	65.7
r	<input type="checkbox"/> 1202R00A	14W	791lm	56.5
s	<input type="checkbox"/> 1202S00A	21W	1366lm	65.0
t	<input type="checkbox"/> 1202T00A	17W	1006lm	59.2
u	<input type="checkbox"/> 1202U00A	19W	1221lm	64.3
v	<input type="checkbox"/> 1202V00A	18W	1151lm	63.9
w	<input type="checkbox"/> 1202W00A	24W	1581lm	65.9
x	<input type="checkbox"/> 1202X00A	15W	861lm	57.4
y	<input type="checkbox"/> 1202Y00A	25W	1581lm	63.2
z	<input type="checkbox"/> 1202Z00A	24W	1581lm	65.9
æ	<input type="checkbox"/> 1202AE00A	32W	2016lm	63.0
ø	<input type="checkbox"/> 1202S00A	27W	1871lm	69.3
â	<input type="checkbox"/> 1202E00A	25W	1656lm	66.2

Efficiency : 69% / CCT : 3000k / CRI : 80 / Voltage : 24VDC



FEATURES:

Construction : Illuminated tubes in opaque injection molded PMMA. Support pins are made of brushed aluminum. 360° light emission. Positioning template included. Distance from wall 3 9/16" (9 cm). illuminated tube of ø 2" (5 cm)

Label: - suitable for dry locations

Class: IP20

Code:	Project:	Type:
	Notes:	

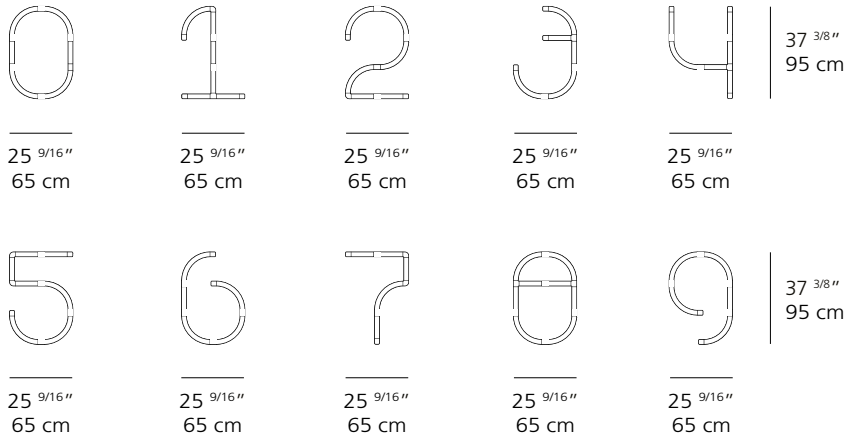
ALPHABET OF LIGHT

Big - Bjarke Ingels Group



NUMBER:

Number	Code	Power consumption	Lumen Delivered	Efficacy (lm/W)	Efficiency : 69% / CCT : 3000k / CRI : 80 Voltage : 24VDC
0	<input type="checkbox"/> 1200000A	27W	1871lm	69.3	
1	<input type="checkbox"/> 1200100A	23W	1436lm	62.4	
2	<input type="checkbox"/> 1200200A	28W	1871lm	66.8	
3	<input type="checkbox"/> 1200300A	24W	1511lm	62.9	
4	<input type="checkbox"/> 1200400A	23W	1436lm	62.4	
5	<input type="checkbox"/> 1200500A	29W	1941lm	66.9	
6	<input type="checkbox"/> 1200600A	25W	1656lm	66.2	
7	<input type="checkbox"/> 1200700A	19W	1221lm	64.3	
8	<input type="checkbox"/> 1200800A	33W	2301lm	69.7	
9	<input type="checkbox"/> 1200900A	25W	1656lm	66.2	



FEATURES:

Construction : Illuminated tubes in opaque injection molded PMMA. Support pins are made of brushed aluminum. 360° light emission. Positioning template included. Distance from wall 3 9/16" (9 cm), illuminated tube of ø 2" (5 cm)

Label: - suitable for dry locations
Class: IP20

REMOTE DRIVER:

Driver	Code	Output Power	Dimension	Driver Technology
<input type="checkbox"/>	AD0200001	20 W	CASE A	ON/OFF 120V OR 277V
<input type="checkbox"/>	AD0200002	40 W		
<input type="checkbox"/>	AD0200003	60 W		
<input type="checkbox"/>	AD0200004	96 W	CASE B	0-10V DIM 120-277V
<input type="checkbox"/>	AD0200005	1X 96W	CASE C *	
<input type="checkbox"/>	AD0200006	2X 96W		

* Maximum mounting distance from fixture is 15ft (457cm)

