

# Wireflow free-form

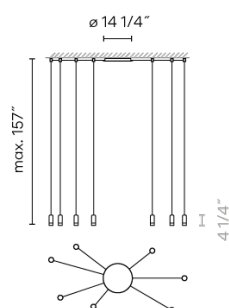
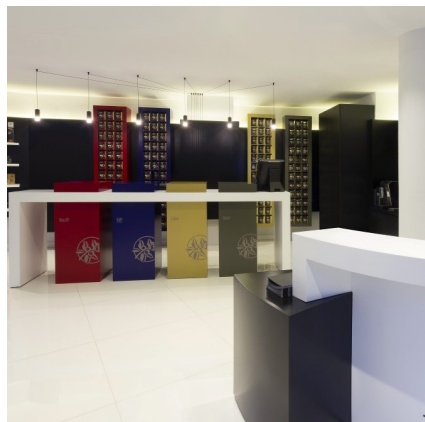
VIBIA

0356

Design By Arik Levy

Wireflow - designed by Arik Levy. Elegant and amorphous, this sculptural luminaire combines artisanal pressed-glass LED light points and industrial black electrical wire to carry out artistic and unique lighting installations. The canopy (power feed) can be positioned on the ceiling or wall.

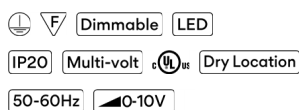
## Spec sheet



**Optional: Extra cable length**  
Min. Quantity, upcharge and extra lead time apply

<b>Finish</b>	● 04 Black RAL 9005
<b>LED color temperature</b>	2700 K
<b>Dimming</b>	0-10V <b>Optional</b> DALI or Lutron ECO Min. Quantity, upcharge and extra lead time apply
<b>Installation type</b>	Surface

<b>Materials</b>	Canopy: Steel Body: Aluminum
<b>Light source</b>	7 x LED 4.5W 700mA
<b>LED</b>	CRI>90 3703.96 lm 117 2700 K
<b>Driver</b>	CC - Constant Current 700 120-277 V 50/60 HZ



<b>Application</b>	Pendants
<b>Packaging</b>	1 Box 16.54 m x 16.54 m x 9.84 m Gross weight 15.42 Net weight 13.22 Vol. 1.5574

### Lighting effect

#### General Lighting

Lamp for general lighting that equally distributes the light in all directions.



### Photometric Data

VIBIA, INC.

USA & CANADA  
272 Fernwood Ave. Edison, NJ 08837. USA  
Phone 732 417 1700 sales@vibia.com www.vibia.com/us/usa

HEADQUARTERS  
Progrés 4-6. 08850 Gavà  
(Barcelona - Spain)