

# Palma

Design by Antoni Arola.

## Reference

**3750.**

## Application

Wall Fixtures

## Installation type

Surface mounted

## Description

Vibia presents Palma designed by Antoni Arola. It includes hand blown glass spheres paired with a lacquered metal support. Sconces are available in horizontal or vertical as single, double or triple with versions available sans planter. Matte white or matte graphite lacquer finishes.

## Diffuser

Blown-glass diffuser

## Materials

Profile: Aluminum  
Flowerpot: PMMA (thermoplastic polymer)  
Ring: Aluminum  
Wall plate: Steel

## Finishes

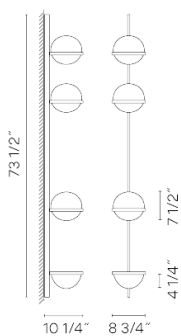


**3750-18** Graphite (ADAPTA RF 9913 WX)



**3750-93** White (RAL 9016)

## Sketch



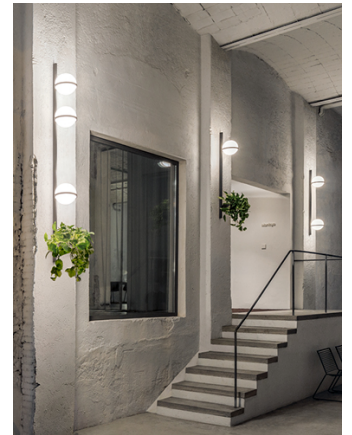
## Electrical characteristics

6 x LED 4.6W 500mA

Total 27.6 W



# VIBIA



**Light source:** 2700K CRI >90 2604 lm 94.34 lm/W

**Fixture:** 2056 lm 74.51 lm/W

**Driver included:** CC - Constant Current 500 mA 120V 50/60Hz

**Electronic dimming:** 1-10V

## Technical characteristics

- Plants not included

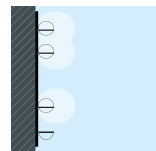
## Installation and assembly

Please see the installation manual

## Light distribution

### General lighting

Lamp for general lighting that equally distributes the light in all directions.



## Photometric data

Coordinate system : CG

Isolux : Isolux (Floor)

Maximum value : 221.08 cd/klm

Light position :

Light position : C=0.00 G=0.00

X=0.00m Y=0.00m Z=2.50m

Symmetry on the planes : Double symmetrical

## Certificates

