

Random Cloud,
Design by Chia-Ying Lee

Model Random Cloud 23 Lights Ø23

Random Cloud captures the essence of why a cloud continues to fascinate us: voluminous yet simultaneously light and ethereal.



Random Cloud 23 Lights Ø23	Light source	Canopy: Metal	Diffuser: Blown glass	Code 2700 K	Code 3000 K
	2700 K 92 W 10350 lm 120 V CRI 90 MacAdam 3- Step	<input type="radio"/> Matte White – 9010 <input type="radio"/> Matte White – 9010 <input type="radio"/> Matte White – 9010 <input type="radio"/> Matte White – 9010 <input type="radio"/> Matte White – 9010 <input type="radio"/> Matte White – 9010 <input type="radio"/> Matte White – 9010 <input type="radio"/> Matte White – 9010	<input type="radio"/> Clear <input type="radio"/> Frosted White <input type="radio"/> Chrome <input type="radio"/> Glossy Smoke <input type="radio"/> Glossy Bronze <input type="radio"/> Gold <input type="radio"/> Rose Gold	22127 0027U 22127 1327U 22127 4027U 22127 4327U 22127 4627U 22127 5027U 22127 5527U	22127 0030U 22127 1330U 22127 4030U 22127 4330U 22127 4630U 22127 5030U 22127 5530U
	3000 K 92 W 11040 lm 120 V CRI 90 MacAdam 3- Step LED and driver included	<input type="radio"/> or			

Net weight: 62.70 lbs

Parcels: 47



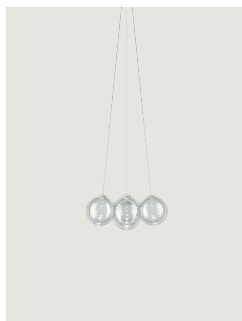
IP20

Energy Saving

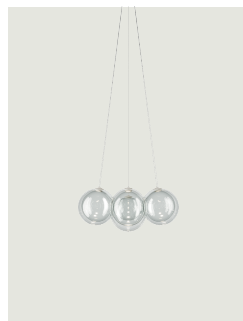
Dim Triac

ERC

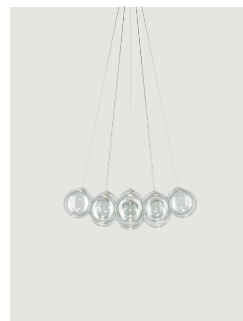
Options of Random Cloud



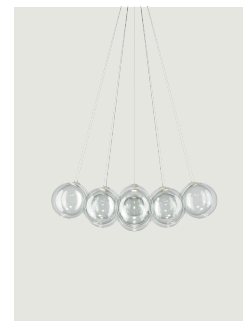
Random Cloud 7 Lights Ø23



Random Cloud 7 Lights Ø28



Random Cloud 14 Lights
Ø23



Random Cloud 14 Lights
Ø28

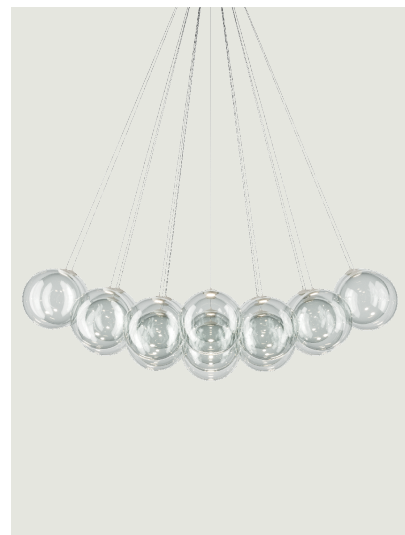


Random Cloud 19 Lights
Ø23

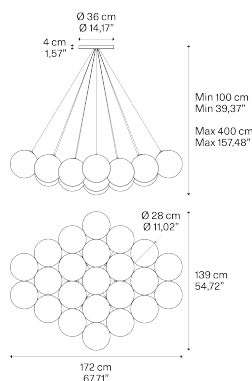
Random Cloud,
Design by Chia-Ying Lee

Model Random Cloud 23 Lights Ø28

Random Cloud captures the essence of why a cloud continues to fascinate us: voluminous yet simultaneously light and ethereal.



Random Cloud 23 Lights Ø28



Light source

2700 K
92 W
10350 lm
120 V
CRI 90
MacAdam 3- Step

or

3000 K
92 W
11040 lm
120 V
CRI 90
MacAdam 3- Step

LED and driver included

Canopy: Metal

- Matte White – 9010
- Matte White – 9010
- Matte White – 9010
- Matte White – 9010
- Matte White – 9010
- Matte White – 9010
- Matte White – 9010

Diffuser: Blown glass

- Clear
- Frosted White
- Chrome
- Glossy Smoke
- Glossy Bronze
- Gold
- Rose Gold

Code 2700 K

- 22128 0027U
- 22128 1327U
- 22128 4027U
- 22128 4327U
- 22128 4627U
- 22128 5027U
- 22128 5527U

Code 3000 K

- 22128 0030U
- 22128 1330U
- 22128 4030U
- 22128 4330U
- 22128 4630U
- 22128 5030U
- 22128 5530U

Net weight: 98.19 lbs

Parcels: 47

Connectable directly to a 4" Standard J-Box



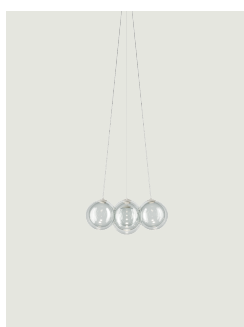
IP20

Energy Saving

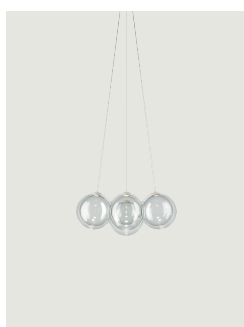
Dim Triac



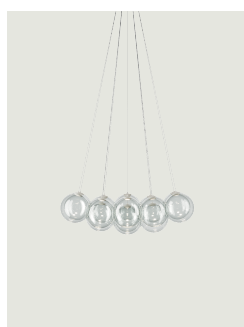
Options of Random Cloud



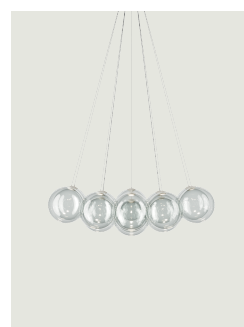
Random Cloud 7 Lights Ø23



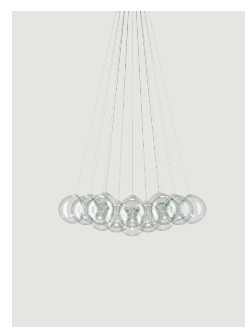
Random Cloud 7 Lights Ø28



Random Cloud 14 Lights Ø23



Random Cloud 14 Lights Ø28



Random Cloud 19 Lights Ø23