

# Caboche Plus, sospensione

by Patricia Urquiola , Eliana Gerotto

FOSCARINI



## DESCRIPTION

Caboche was created in 2005 as a result of the desire to create a precious and charming lamp like a pearl brace-let, accommodated with a focus on light weight and transparency. Rich, bright and sophisticated, it was a success from the onset, becoming one of Foscarini's biggest bestsellers, and went on to become a genuine icon of designer lighting. It is now presented in the Plus version, with a new LED which guarantees a more in-tense light yet without creating glare. Total transparency wins in Caboche Plus, as your eyes roam through the entire lamp thanks to the new zigzagging arches which do not shield the light. What's more, the new attachment system, which is even simpler and more user-friendly, guarantees greater stability for the sphere and makes it simply to use.

## MATERIALS

PMMA, blown glass, steel and coated aluminium

## COLORS

Grey, Transparent

# Caboche Plus, sospensione

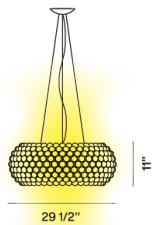
technical details

FOSCARINI

Suspension lamp with diffused light. Structure comprising transparent PC arches, onto which a series of PMMA spheres are applied, using the new twist lock system. The lamp body consists of two powder coated steel sheets, which incorporate the double-sided LED board, designed specifically by Foscarini, thereby obtaining a superior level of colour rendering (CRI) and retaining the same colour temperature as a halogen light source (degrees Kelvin). The LED board is installed on an aluminium disc that acts as a dissipator, which is protected at the top by a small opaline PMMA disc and at the bottom by a satin-finish PMMA diffuser. Three-point suspension system with steel cables. White ceiling canopy. Electric decentralisation kit available.

## Caboche Plus grande LED

### SCHEMATIC & LIGHT EMISSION



### MATERIAL

PMMA, blown glass, steel and coated aluminium

### COLORS



### ACCESSORIES

Caboche Plus

### LIGHT SOURCE

LED included  
33,5W  
2700 K 3850 lm CRI>90

### CERTIFICATIONS



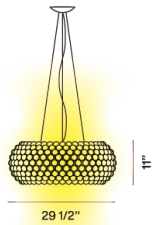
# Caboche Plus, sospensione

technical details

FOSCARINI

## Caboche Plus Grande LED MyLight

### SCHEMATIC & LIGHT EMISSION



### MATERIAL

PMMA, blown glass, steel and coated aluminium

### COLORS



### ACCESSORIES

Caboche Plus

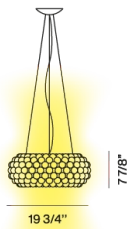
### LIGHT SOURCE

Doesn't apply to 120V

### CERTIFICATIONS

## Caboche Plus media

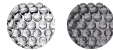
### SCHEMATIC & LIGHT EMISSION



### MATERIAL

PMMA, blown glass, steel and coated aluminium

### COLORS



### ACCESSORIES

Kit B  
Kit F  
Kit M

### LIGHT SOURCE

Halo 220/240V: Max 1x150W RSC

### CERTIFICATIONS





425 Peachtree Hills Ave. NE #3 Atlanta, GA 30305  
404.876.1064 sales@illumco.com

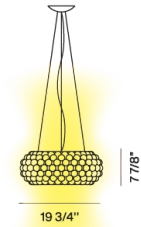
# Caboche Plus, sospensione

technical details

FOSCARINI

## Caboche Plus media LED

SCHEMATIC & LIGHT EMISSION



MATERIAL

PMMA, blown glass, steel and coated aluminium

COLORS



ACCESSORIES

Kit B

LIGHT SOURCE

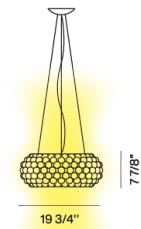
LED included  
27W  
2700 K 3200 lm CRI>90

CERTIFICATIONS



## Caboche Plus media LED MyLight

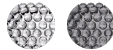
SCHEMATIC & LIGHT EMISSION



MATERIAL

PMMA, blown glass, steel and coated aluminium

COLORS



ACCESSORIES

Caboche Plus

LIGHT SOURCE

Doesn't apply to 120V

CERTIFICATIONS

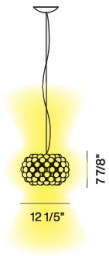
# Caboche Plus, sospensione

technical details

FOSCARINI

## Caboche Plus piccola LED

### SCHEMATIC & LIGHT EMISSION



### MATERIAL

PMMA, blown glass, steel and coated aluminium

### COLORS



### ACCESSORIES

Kit B  
Kit F  
Kit M

### LIGHT SOURCE

included  
9,5W  
2700 K 1000 lm CRI>90

### CERTIFICATIONS



# Caboche Plus, sospensione

Designer

FOSCARINI

## PATRICIA URQUIOLA

An internationally renowned architect and designer, Patricia Urquiola has received multiple major acknowledgements such as the “Designer of the Decade” title from the Home and Häuser magazines, and “Designer of the Year” from Wallpaper, Ad Spain, Elle Decor International and Architektur und Wohnen Magazine.

Some of her projects are exhibited in several museums and collections. Together with Eliana Gerotto, industrial designer, curator of outfits and interior decorator, she has designed Caboche, a precious, luminous emotion that stems from a combination of technology and creativity.





# Caboche Plus, sospensione

Designer

FOSCARINI

## ELIANA GEROTTO

A Venetian, she obtained her diploma in Communication Techniques in Milan. She has worked as a graphic designer for the Parisian magazine, Elle, and for the Venice Biennale, while she co-operates with some major Italian brands as image and product consultant.

Her creative entrepreneurship drives her towards ever-differing professional experiences, from interior designs to furnishings and even jewellery. Together with Patricia Urquiola, she has designed Caboche, a precious, luminous emotion that stems from a combination of technology and creativity.





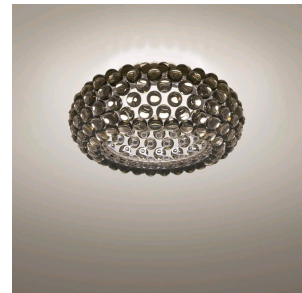
**Caboche Plus**



**Caboche Plus**



**Caboche**



**Caboche Plus**