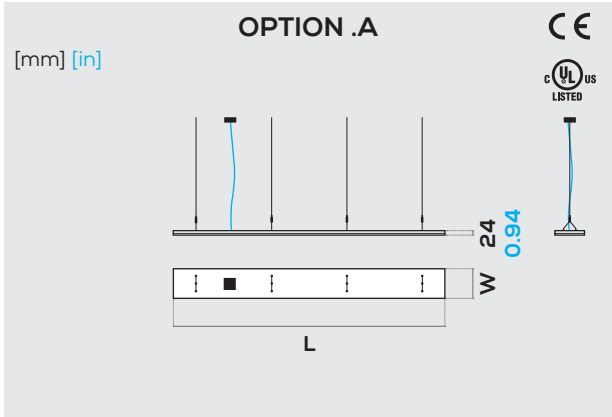
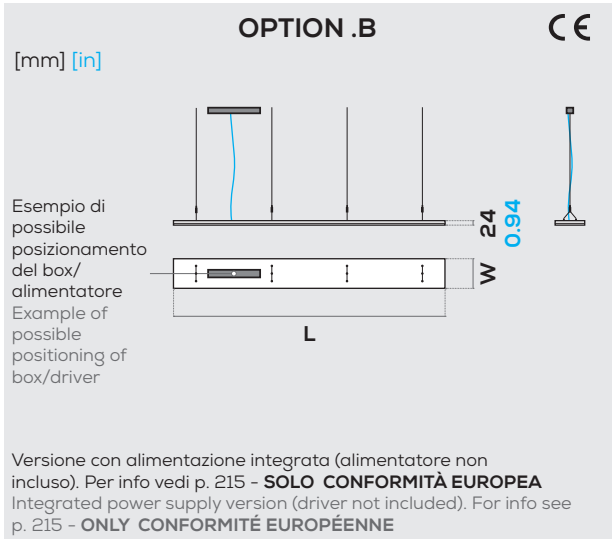




.LINE SUSPENDED



Versione con alimentazione remota (alimentatore non incluso). Per info vedi pp. 214 - 215. Dettagli cover cavo alimentazione a p. 81
 Remote power supply version (driver not included). For info see pp. 214 - 215. Power cable coverplate details at p. 81

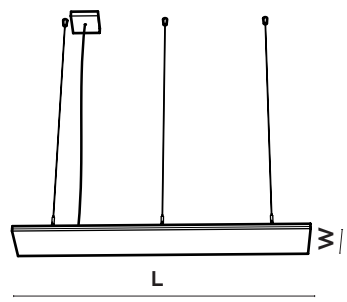


Esempio di possibile posizionamento del box/alimentatore
 Example of possible positioning of box/driver

Versione con alimentazione integrata (alimentatore non incluso). Per info vedi p. 215 - **SOLO CONFORMITÀ EUROPEA**
 Integrated power supply version (driver not included). For info see p. 215 - **ONLY CONFORMITÉ EUROPÉENNE**

Installazione Installation

A sospensione
 Suspended



GENERAL INFO



IP65 e UL DAMP LOCATION su richiesta
 On request IP65 and UL DAMP LOCATION

Line a sospensione
 Alluminio - Metacrilato
 2700K/ 3000K/ 3500K/ 4000K/ 5700K/ TW - CRI > 90
 Temperature colore 2000K, 2200K, 2500K, 5000K, 6500K, RGB, RGBW e RGBTW su richiesta
 Nichia Optisolis™ (CRI 100) e Nichia Vitasolis™ su richiesta

Line suspended
 Aluminum - Methacrylate
 2700K/ 3000K/ 3500K/ 4000K/ 5700K/ TW - CRI > 90
 On request color temperature 2000K, 2200K, 2500K, 5000K, 6500K, RGB, RGBW and RGBTW
 On request Nichia Optisolis™ (CRI 100) and Nichia Vitasolis™

Finiture alluminio Aluminum finishings

Standard Standard	Speciali Special
○ bianco white	● ●
● nero black	○ ● (esempi) (examples)
	● ●

Colori e finiture speciali alluminio su richiesta (vedi p. 80)
 On request special aluminium colors and finishings (see p. 80)

Finiture opale Opal finishings

Standard Standard	Speciali Special
○ lucido gloss	opal milling
○ opaco matte	opal sculpture

Finiture speciali opale su richiesta (vedi p. 83)
 On request special opal finishings (see p. 83)

Dimensioni Size

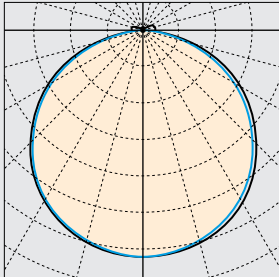
		[mm] [in]	
W		L	
200 mm	7.87 in	x 1200 mm	47.24 in
200 mm	7.87 in	x 1500 mm	59.05 in
200 mm	7.87 in	x 1800 mm	70.86 in
150 mm	5.90 in	x 2400 mm	94.48 in
150 mm	5.90 in	x 3000 mm	118.11 in

Altre dimensioni su richiesta
 Custom sizes available



.LINE SUSPENDED

Polar diagram [cd/klm]



C180 — C270 — C0 — C90

UGR

$X = 4 H, Y = 8 H$

$S = 0.25 H$

Indici di riflessione
Reflectance indexes

70/ 50/ 20

.LINE SUSPENDED

UGR trasversale
UGR crosswise

UGR longitudinale
UGR endwise

200 x 1200 mm
7.87 x 47.24 in

< 19

< 19

200 x 1500 mm
7.87 x 59.05 in

< 19

< 19

200 x 1800 mm
7.87 x 70.86 in

< 19

< 19

150 x 2400 mm
5.90 x 94.48 in

> 19

> 19

150 x 3000 mm
5.90 x 118.11 in

> 19

> 19

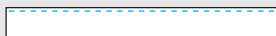
Posizione LED LED position

L1

un lato LED
one LED side

L2

due lati LED
two LED sides



LED

Nichia Optisolis™ e Nichia Vitasolis™ su richiesta
On request Nichia Optisolis™ and Nichia Vitasolis™

LIGHT INFO

LED Lifespan: L90 > 60.000 ore a 50° Celsius
Blue Light risk group (200 mm): EXEMPT UNLIMITED
Garanzia: 2 anni (disponibile estensione fino a 5 anni su richiesta)
Input LED: 24 V DC
Driver - Trasformatore: AC/DC 24 V

LED Lifespan: L90 > 60.000 hours at 50° Celsius
Blue Light risk group (200 mm): EXEMPT UNLIMITED
Warranty: 2 years (on request extension up to 5 years available)
Input LED: 24 V DC
Driver - Transformer: AC/DC 24 V

Temperatura colore Color temperature

- 2700 K
- 4000 K
- 3000 K
- 5700 K
- 3500 K
- Tunable White

CCT 2000K, 2200K, 2500K, 5000K, 6500K, RGB, RGBW e
RGBTW su richiesta
On request CCT 2000K, 2200K, 2500K, 5000K, 6500K, RGB,
RGBW and RGBTW

Flusso luminoso output e potenza Luminous flux output and power

Dimensione	L1	L2	Potenza
200 x 1200 mm 7.87 x 47.24 in	1213 lm	2310 lm	30 W / 60 W
200 x 1500 mm 7.87 x 59.05 in	1386 lm	2640 lm	38 W / 76 W
200 x 1800 mm 7.87 x 70.86 in	1501 lm	2860 lm	45 W / 90 W
150 x 2400 mm 5.90 x 94.48 in	1871 lm	3564 lm	60 W / 120 W
150 x 3000 mm 5.90 x 118.11 in	2252 lm	4290 lm	75 W / 150 W

Info LED LED info

$CRI R_a = 100$ (Nichia Optisolis™) su richiesta
On request $CRI R_a = 100$ (Nichia Optisolis™)

CRI R_a min 90
 R_s min 50

LED Nichia

Dimmerabile Si (vedi pp. 214 - 215)
Dimmable Yes (see pp. 214 - 215)



.LINE SUSPENDED

Codice prodotto
Product code

								[mm] [in]
prodotto product	dimensioni sizes	flusso luminoso luminous flux	CCT	finiture alluminio aluminium finishings	finitura opale opal finishings	fissaggio fastening		
LA .LINE alimentazione remota remote power supply	02 200 x 1200	L1 1 lato LED 1 LED side	27 2700 K	W bianco white	G lucido gloss	S a sospensione suspended		
	12 7.87 x 47.24							
LB .LINE alimentazione integrata integrated power supply	02 200 x 1500	L2 2 lati LED 2 LED sides	30 3000 K	B nero black	M opaco matte			
	15 7.87 x 59.05							
	02 200 x 1800	35 3500 K	S speciale ¹ special ¹	OM opal milling ¹				
	18 7.87 x 70.86							
	015 150 x 2400	40 4000 K		OS opal sculpture ¹				
	24 5.90 x 94.48							
	015 150 x 3000	57 5700 K						
	30 5.90 x 118.11							
			TW Tunable White					
			RQ su richiesta on request					

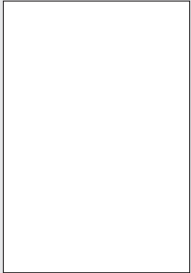
¹Finiture speciali su richiesta (vedi pp. 80 - 83)
¹On request special finishings (see pp. 80 - 83)

Dimensioni disponibili
Available sizes

				[mm] [in]
Il numero e la posizione delle cover sono indicativi e variano in base all'uscita dei cavi di alimentazione Number and coverplate position is just indicative. They are based on the power cables exit				
200 x 1200 7.87 x 47.24			cover cavo alimentazione power cable coverplate	
200 x 1500 7.87 x 59.05			cavi di sospensione suspension cables	
200 x 1800 7.87 x 70.86			Lunghezza cavi Susp. cables length	≤ 3000 mm ≤ 3000 mm ≤ 118.11 in
150 x 2400 5.90 x 94.48			Su richiesta On request	fino a 5000 mm up to 5000 mm up to 196.86 in
150 x 3000 5.90 x 118.11				

DETTAGLI E FINITURE DETAILS AND FINISHINGS

Finiture standard alluminio Standard aluminium finishings



Bianco
White

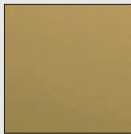


Nero
Black

Finiture speciali alluminio - verniciatura (esempi) Special aluminium finishings - liquid painting (e.g.)



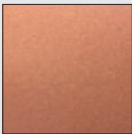
Bronzo
Bronze



Ottone
Brass



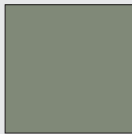
RAL 3005



Rame
Copper



RAL 7035



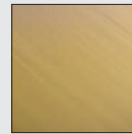
RAL 7033

Finitura RAL personalizzata disponibile su richiesta
On request custom RAL finishing available

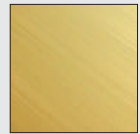
Finiture speciali alluminio - ossidazione (esempi) Special aluminium finishings - oxidation (e.g.)



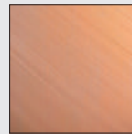
Bronzo
Bronze



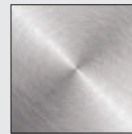
Ottone
Brass



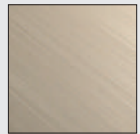
Oro
Gold



Rame
Copper



Cromato
Chrome



Champagne
Champagne

Dettagli sospensione Suspension details



Terminale Line
Line suspension
cable terminal



Nodo
Joint

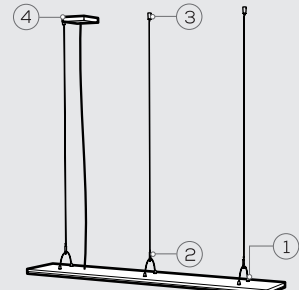


Rosone
Ceiling rose

Installazione cover Coverplate installation



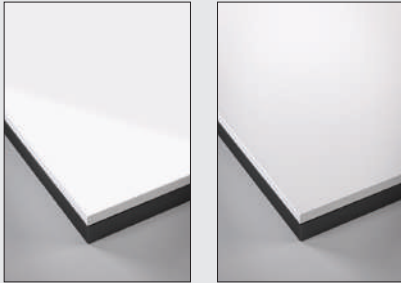
Cover*
Coverplate*



*Disponibile nelle finiture standard alluminio
*Available in standard aluminium finishings

FINITURE OPALE OPAL FINISHINGS

Finiture standard opale
Standard opal finishings



Lucido
Gloss

Opaco
Matte

OPAL MILLING

Finiture speciali opale - fresatura
Special opal finishings - milling



Su richiesta grafica personalizzabile
On request customizable graphic

La tridimensionalità, resa dalla fresatura del diffusore opale, crea dinamicità sulla superficie e permette alla luce di muoversi tra effetti di chiaro-scuro. L'alta qualità della sorgente luminosa è garantita dalla tecnologia FOLIO® che, unita alla fresatura, consente di lavorare con precisione anche le trame più complesse.

The three-dimensionality, made by milling the opal diffuser, creates dynamism on the surface, allowing brightness to move between light and shade effects. The high quality of the light source is guaranteed by the FOLIO® technology which, together with the milling, allows to create with precision even the most complex textures.

OPAL SCULPTURE

Finiture speciali opale - incisione laser
Special opal finishings - laser engraving



Su richiesta grafica personalizzabile
On request customizable graphic

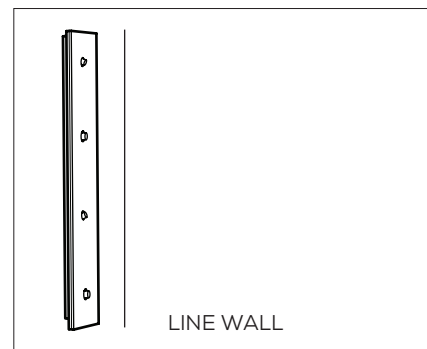
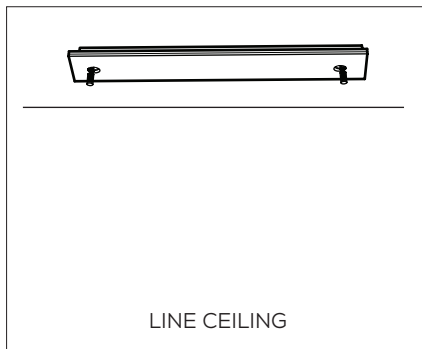
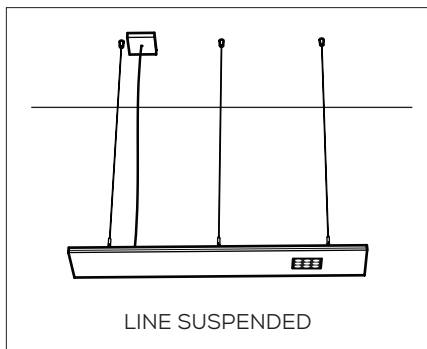
L'incisione della superficie opale attraverso lavorazioni laser di ultima generazione, impreziosisce la sorgente luminosa creando delicati bassorilievi che le conferiscono carattere ed individualità. L'elevata precisione del processo di rimozione del materiale tramite incisione laser garantisce l'eccellente resa dei prodotti FOLIO®.

The opal surface engraving, through latest laser technologies, make the luminous fount more precious making delicate low reliefs that give character and individuality to the panels. The high precision of the material removal process by laser engraving guarantees the excellent yield of the FOLIO® products.

.FOLIO® SPOT.MATE®

INTEGRABLE ON REQUEST WITHIN THE FOLLOWING FOLIO® COLLECTION

.LINE



LED

Sizes



DOMINO QUAD

NICHIA

88 x 88 mm

3.46 x 3.14 in



DOMINO LINEAR

NICHIA

172 x 32 mm

6.77 x 1.25 in



PICO 26.t

NICHIA

Ø 26 mm

Ø 1.02 in



PICO 26.a

NICHIA

Ø 26 mm

Ø 1.02 in



MICRO 40.t

NICHIA

Ø 40 mm

Ø 1.57 in



MICRO 40.t

OLE SORAA

Ø 40 mm

Ø 1.57 in



MICRO 40.a

NICHIA

Ø 40 mm

Ø 1.57 in



MICRO 40.a

OLE SORAA

Ø 40 mm

Ø 1.57 in



MINI 62.a

NICHIA

Ø 62 mm

Ø 2.44 in



MINI 62.a

OLE SORAA

Ø 62 mm

Ø 2.44 in



MIDI 77.a

NICHIA

Ø 77 mm

Ø 3.03 in



MIDI 77.a

ARCANE MODULE

Ø 77 mm

Ø 3.03 in

Contact FOLIO® for your net price multiplier.

All prices include fixing system, standard CCT options & standard finishes.

Power supplies for Spot.Mate® are not included. Shipping is not included. 22